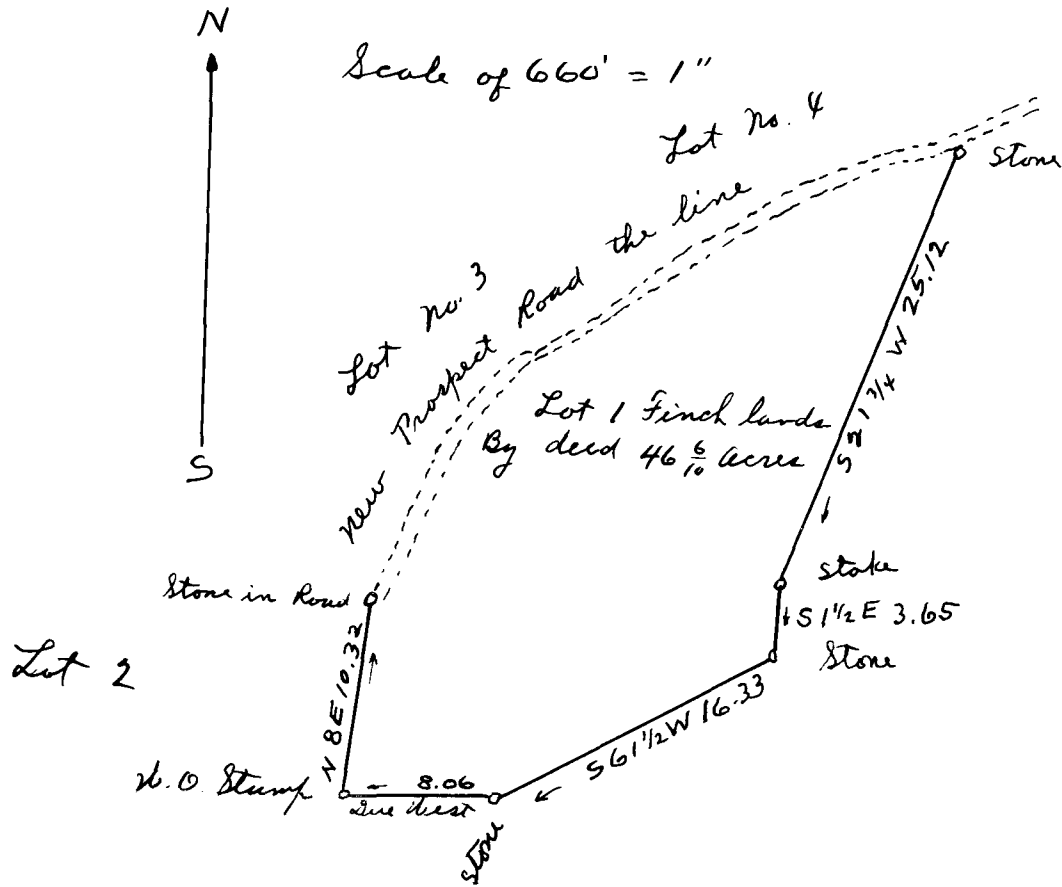


EX PARTE
M. G. CLARK ESTATE



Spartanburg County }
State of South Carolina }

The above plat represents a lot of land belonging to the Estate of M. G. Clark. It was not surveyed by me nor calculated by me but was platted from a deed; therefore cannot represent all the roads and streams correctly.

See deed from J. W. Finch to M. G. Clark, dated Oct. 23, 1899 and recorded at Spartanburg, S. C. in Office of Reg. M. Conveyance in Book XXX page 195.

M. E. Johnson
Surveyor.

Registered, Certified + Examined Oct. 13-1922