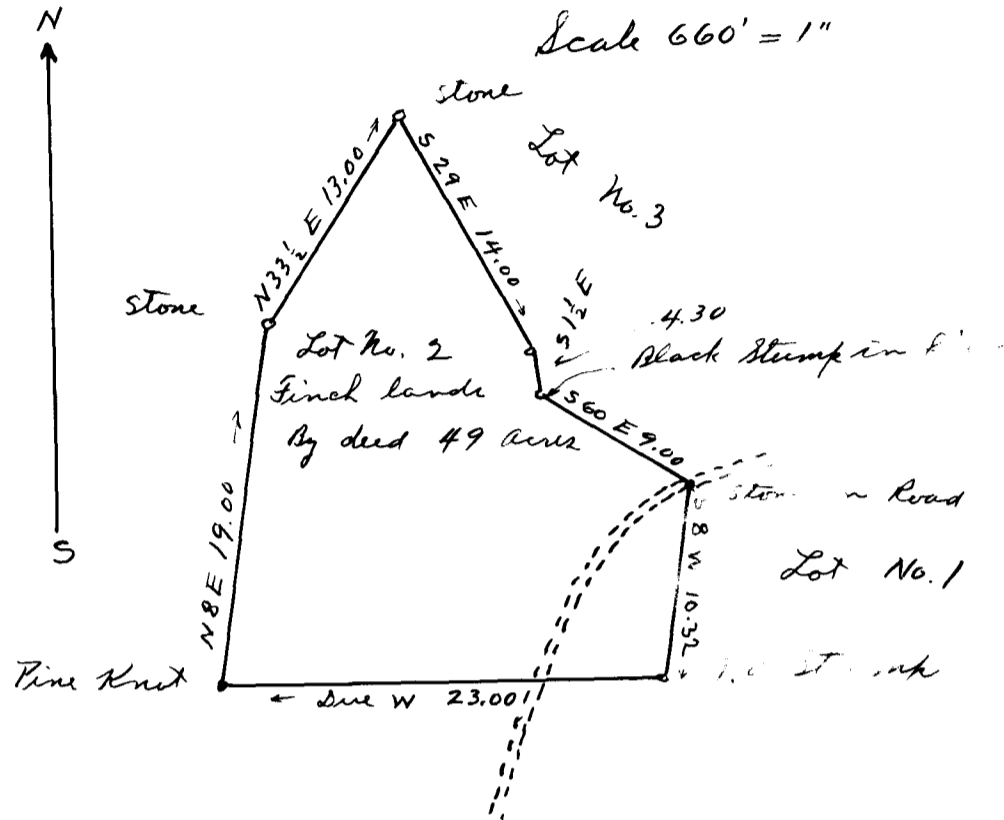


EX PARTE  
M. G. CLARK ESTATE



State of South Carolina }  
Spartanburg County }

The above plat represents a lot of land belonging to the estate of M. G. Clark. It was not surveyed nor counted by me, but was platted from a deed; therefore the roads, streams &c. may not all be represented and where represented may not be exactly correct.

See deed from Mary L. Bishop and A. M. Bishop to M. G. Clark, dated Feb. 17<sup>th</sup>, 1899 and recorded at Spartanburg, S. C. in Clerk's Office in Book XXX page 194.

M. E. Johnson  
Surveyor

Registered, Certified & Examined Oct. 13-1922