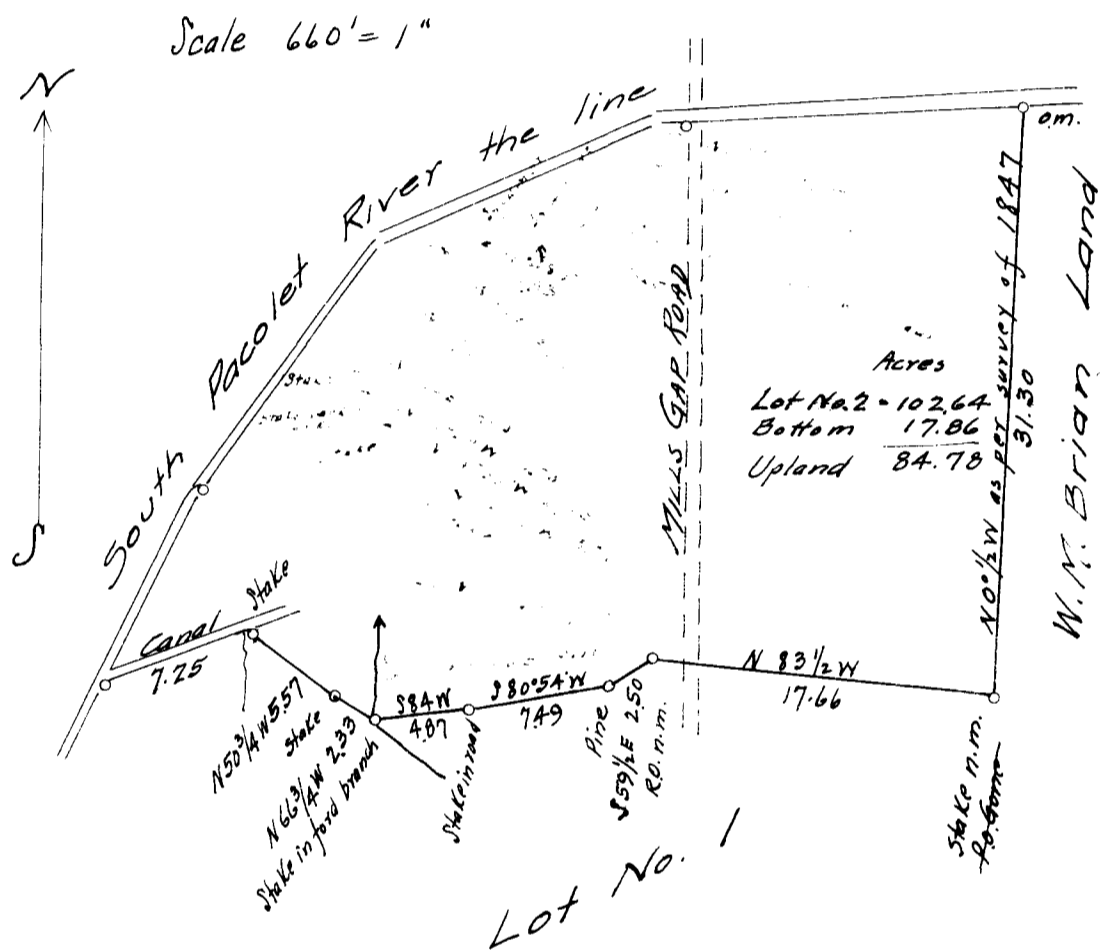


EX PARTE
M. G. CLARK



State of South Carolina
Spartanburg County

The above plat represents lot No. 2 of Division of M. G. Clark home place. It contains 102.64 acres. It lies South of South Pacolet River and on both sides of Mills Gap Road.

The river lines were not surveyed by me; but was taken from an imperfect plat and deed dated about 1847, therefore may not be exactly correct. The lines between lot 1 and 2 was surveyed Oct. 20th 1921.

M. E. Johnson
Surveyor

Registered, Certified & Examined Nov. 21-1922