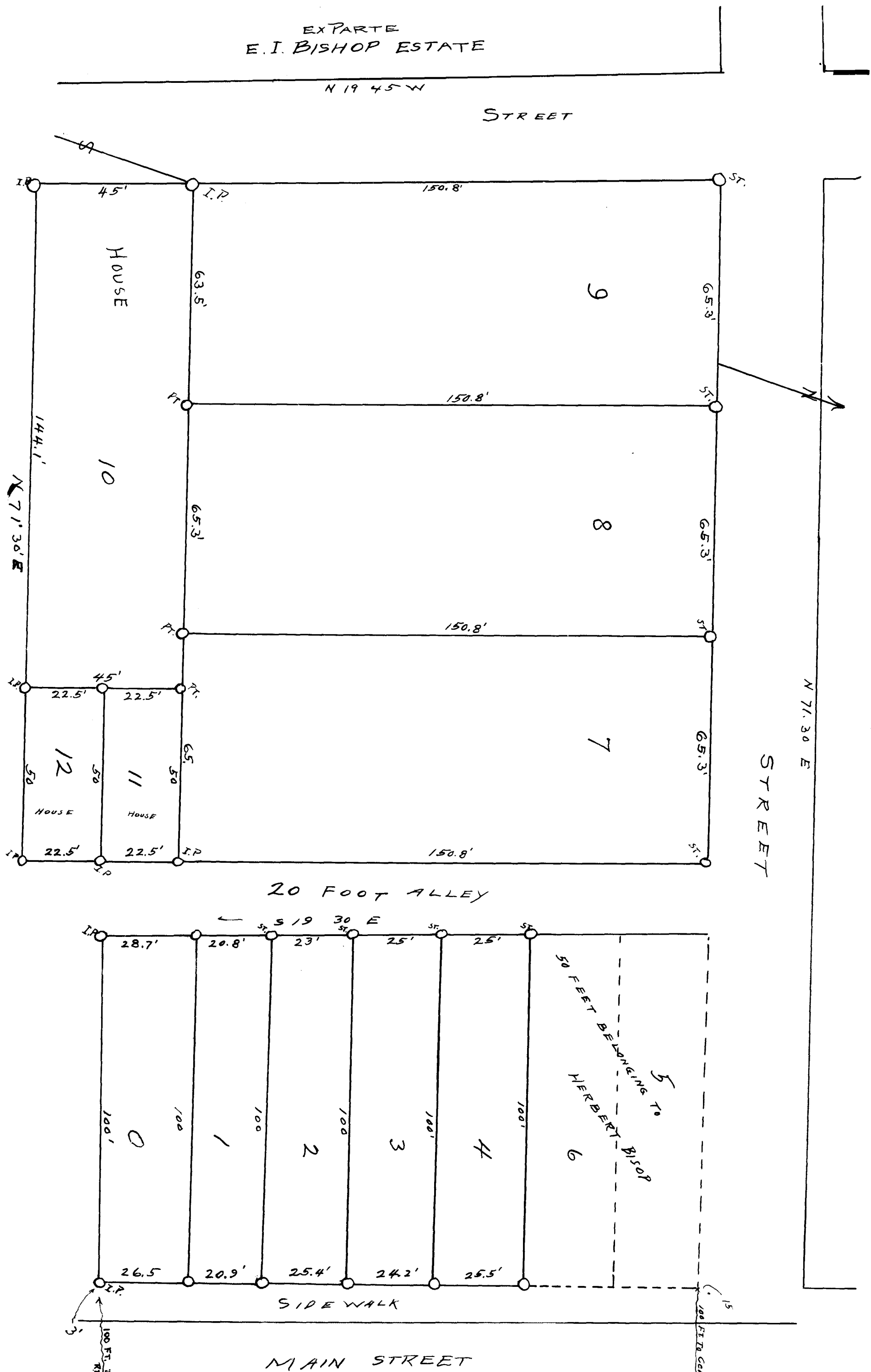


102

EX PARTE
E. I. BISHOP ESTATE



Plat represents ten (10) Lots subdividing the E. I. BISHOP ESTATE in the town of Sumner, S. D. as surveyed for Interstate Land Auction Company by order of Court of Probate Spartaenburg County Done Oct 1921 By L. P. Epton, Sur. Scale 25' = 1"

Registered, Certified & Examined Dec. 1 - 1922