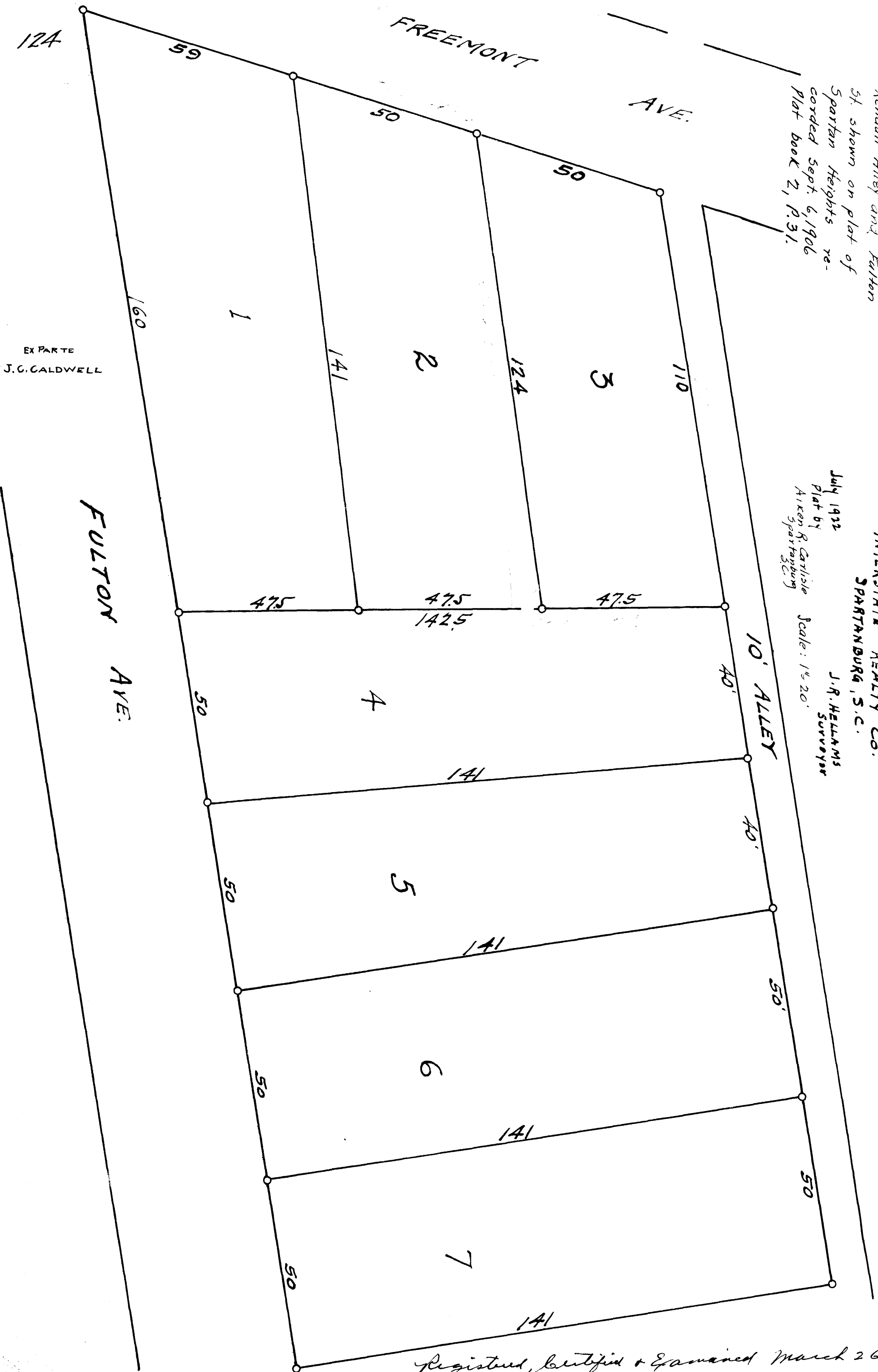


Same being identical with the excluded unnumbered space lying between Kendall Alley and Fulton St. shown on plat of Spartan Heights recorded Sept. 6, 1906 Plat book 2, p. 31.

SUBDIVISION OF J.C. CALDWELL LOT FOR INTERSTATE REALTY CO. SPARTANBURG, S.C.

July 1922  
Plat by Aiken R. Carlisle Spartanburg S.C.  
J.R. HELLAMS Surveyor  
Scale: 1" = 20'



EX PARTE J.C. CALDWELL

Registered, Certified & Examined March 26-1923