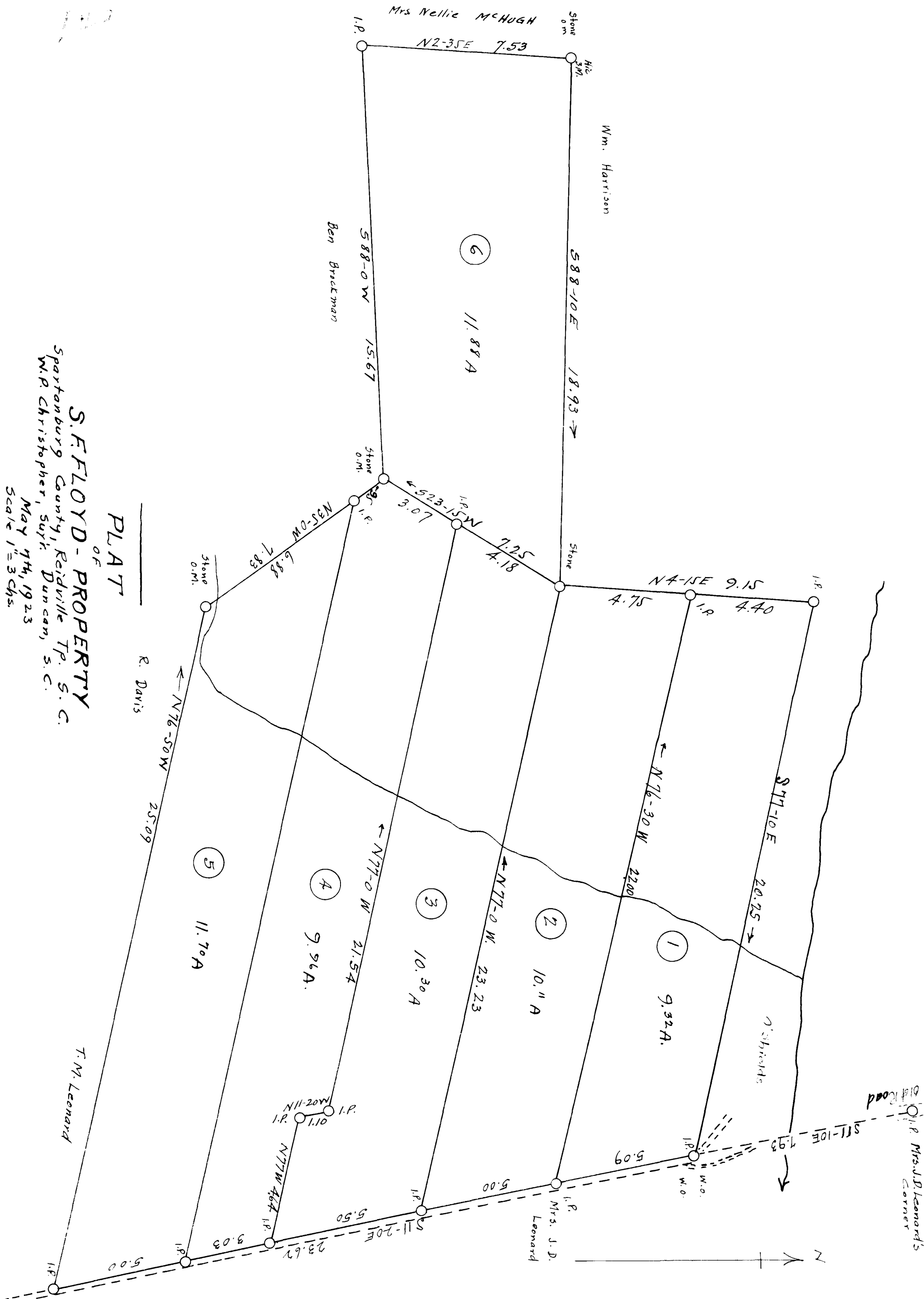


49

EX PARTE
S. F. FLOYD



PLAT
OF

S.F. FLOYD - PROPERTY
 Spartanburg County, Reidville Tp. S. C.
 W.P. Christopher, Supt. Duncan, S. C.
 May 7th, 1923
 Scale 1" = 3 Chs.

Registered, Certified & Examined Sep. 20-1923