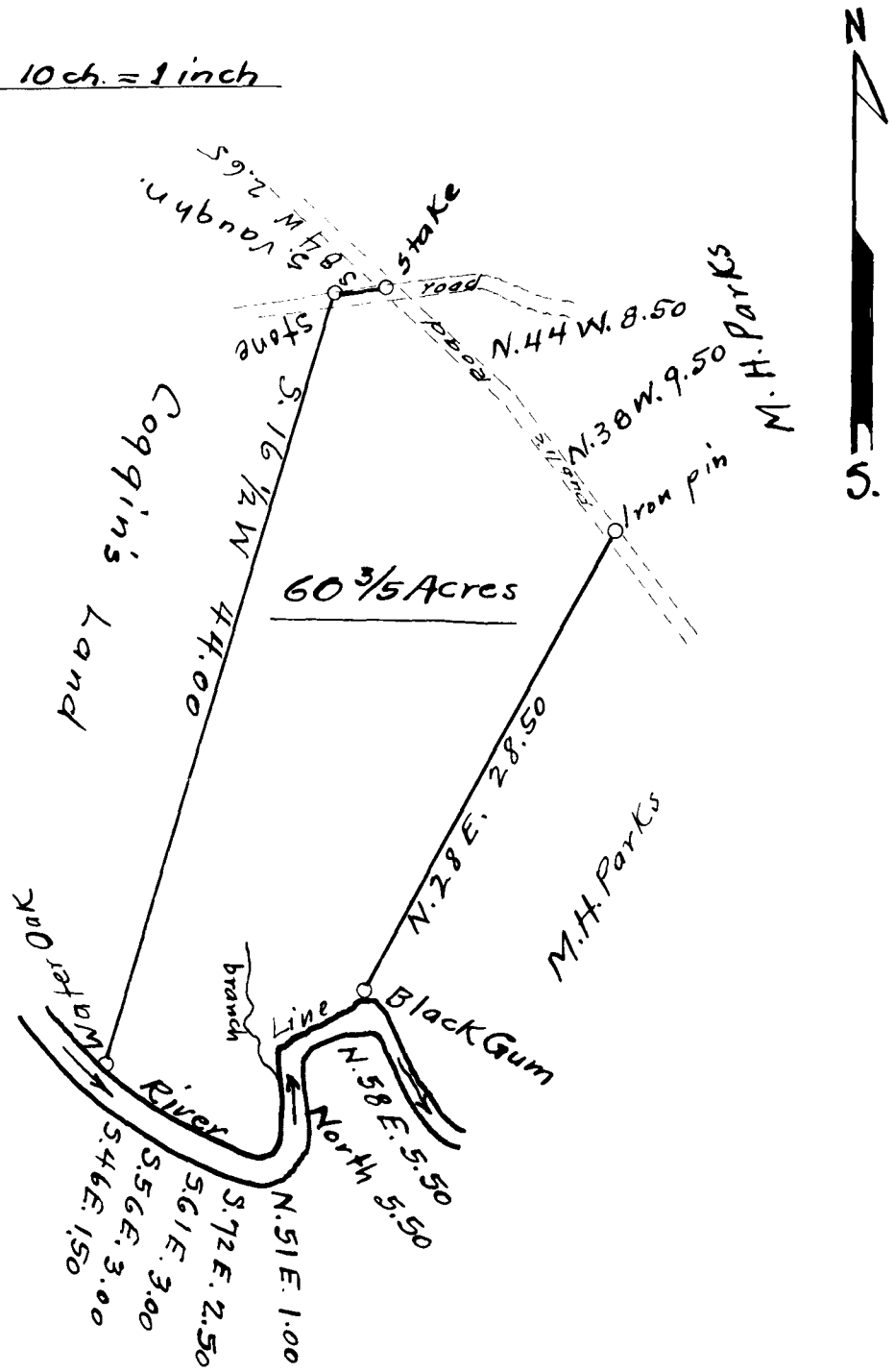


✓ 150

EX PARTE
S. P. PARKS JR.

Scale: 10 ch. = 1 inch



State of South Carolina
County of Spartanburg
Property of
S. P. PARKS Jr.

Containing Sixty and three-fifths acres
more or less.

Surveyed: August 13, 1923.

S. G. Anderson & Sons
Surveyors.

Registered, Certified & Examined Sep. 24-1923