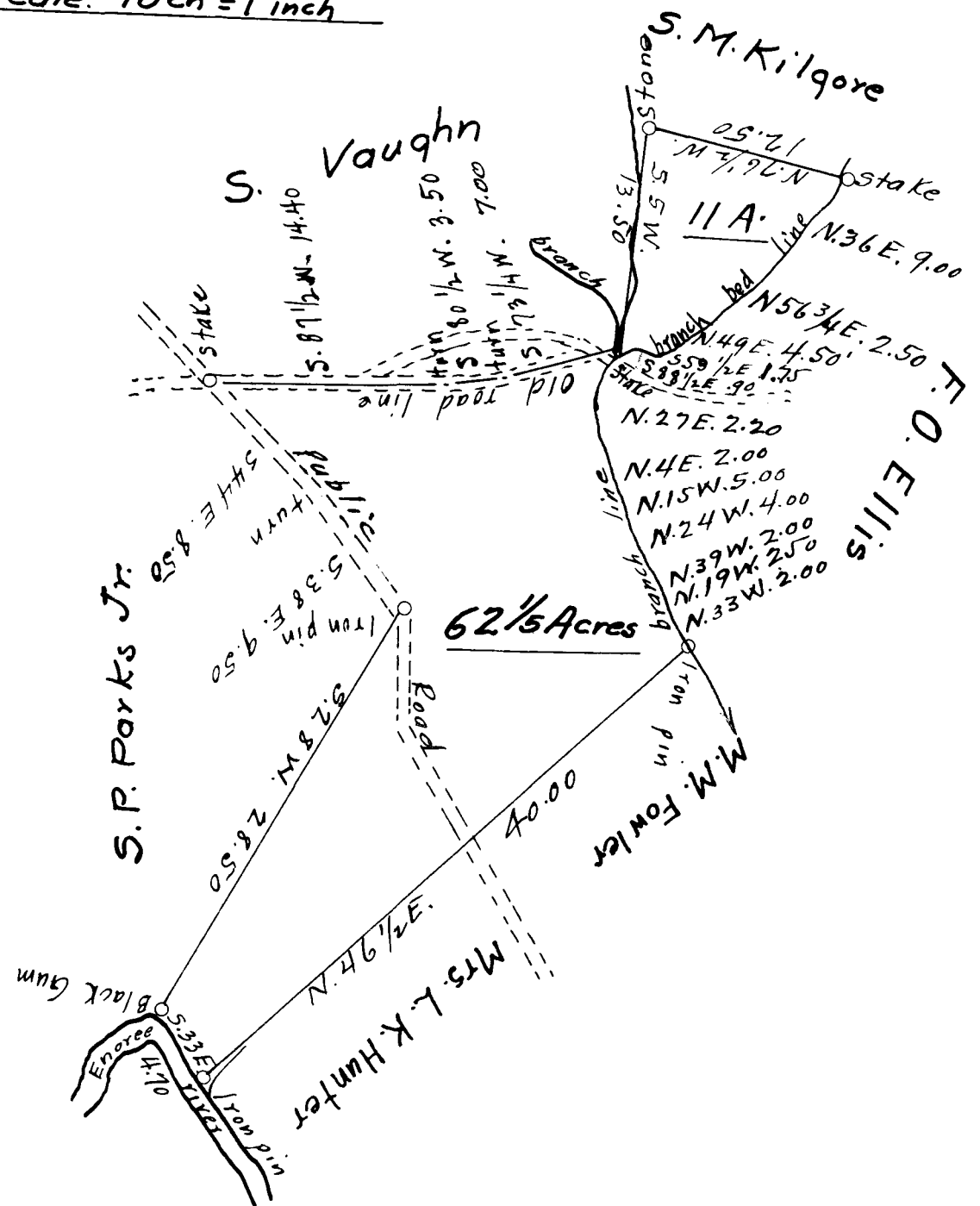


151

EX PARTE
M. H. PARKS

Scale: 10ch = 1 inch



State of South Carolina
County of Spartanburg

Property of
M. H. PARKS

Containing Seventy-three
and one-fifth acres more or less.

S. G. Anderson & Sons.
Surveyors.

62 1/5 Acres
11 "

73 1/5 "

Surveyed: August 13, 1923.

Registered, Certified & Examined Sep. 24, 1923