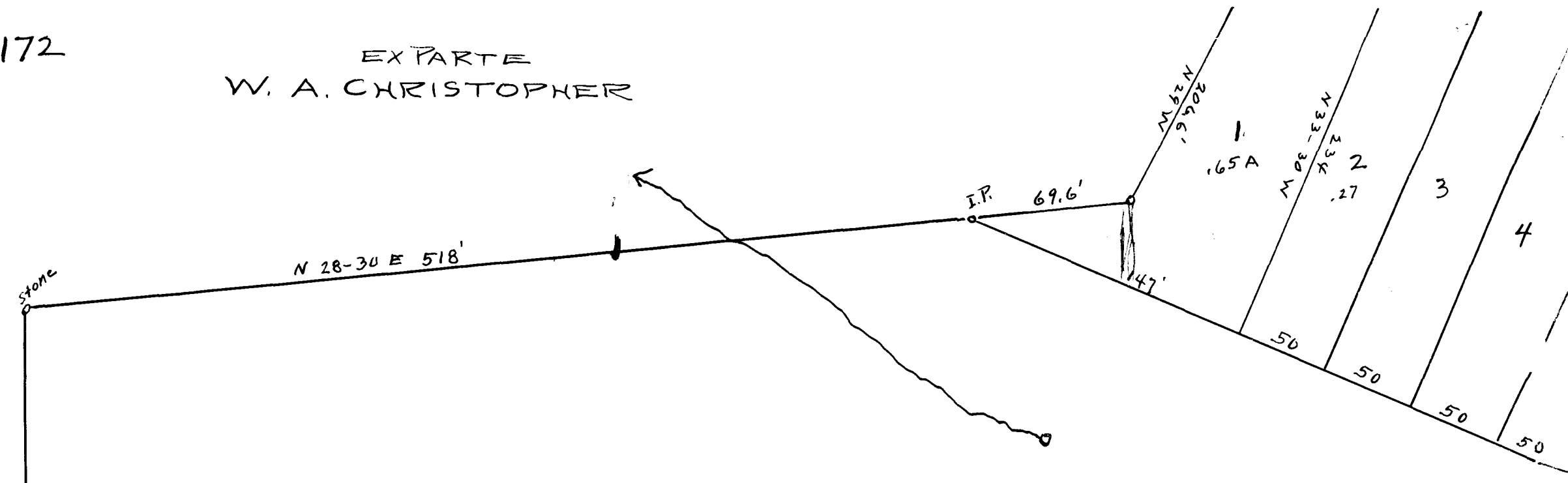


172

EX PARTE  
W. A. CHRISTOPHER



Plat of Subdivision of  
W.A. Christopher Lands  
Duncan, Spartanburg County, S.C.  
For Interstate Land Auction Company  
Scale 1" = 66'  
W.A. Christopher, Sur.,  
Oct. 15-1923

10<sup>15</sup> A.

I.P.	92.8	50	50	50	50	50	50	50	50	50	50	50	50	50	50	50	S 33-45 W 1242.8'
		67	66	65	64	63	62	61	60	59	58	57	56	55	54	53	5
I.P.	N 33-45 E 82'	50	50	50	50	50	50	50	50	50	50	50	50	50	50	50	CHRISTOPHER STREET
I.P.	28-A	50	50	50	50	50	50	50	50	50	50	50	50	50	50	50	N 33-45 E
		29-A	30-A	31-A	32-A	33-A	34-A	35-A	36-A	37-A	38	39	40	41	42	43	
I.P.	74	50	50	50	50	50	50	50	50	50	50	50	50	50	50	50	N 33-45 E 50'
		37	36	35	34	33	32	31	30	29	28	27	26	25	24	23	
I.P.	55	50	50	50	50	50	50	50	50	50	50	50	50	50	50	50	S 33-45 W 18.65 chs.
		59															

Registered, Certified + Examined Jan'y 17-1924