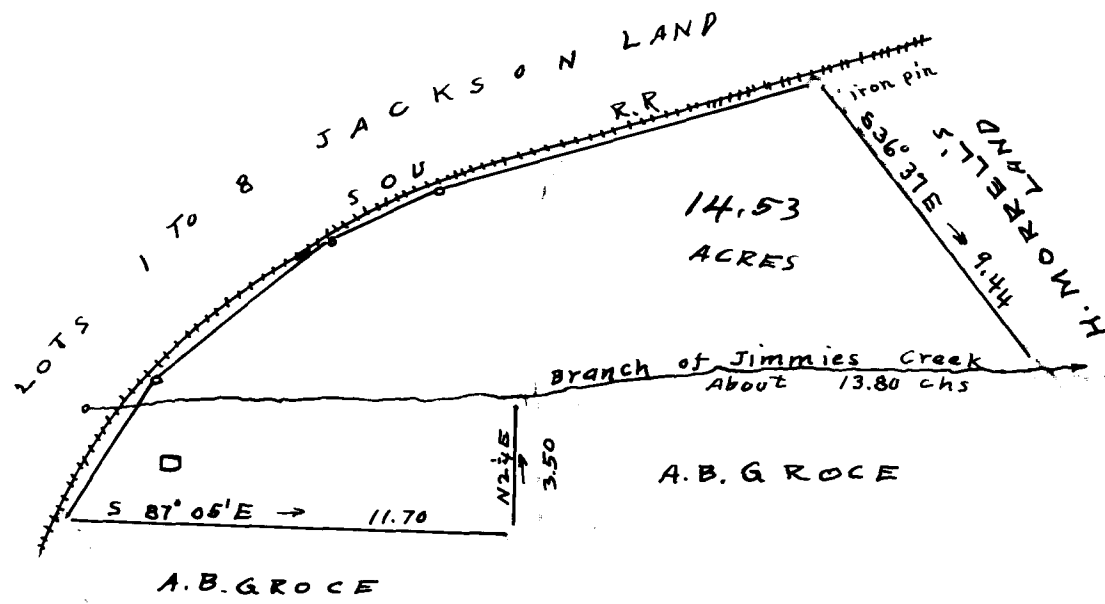


EX PARTE
MRS. M. E. GROCE ESTATE

Scale: - 1 inch = 5 chains



LOT No. 9
 JACKSON LAND
 EST. OF
 MRS. M. E. GROCE DEC'D
 NEAR
 WELLFORD, S.C
 SURVEYED & PLATTED OCT. 10-1923
 J. H. ATKINS, SUR'R

NOTE:- See separate Plats for Lots 1 to 8 of
 Jackson Land.

Registered, Certified & Examined May 24-1924