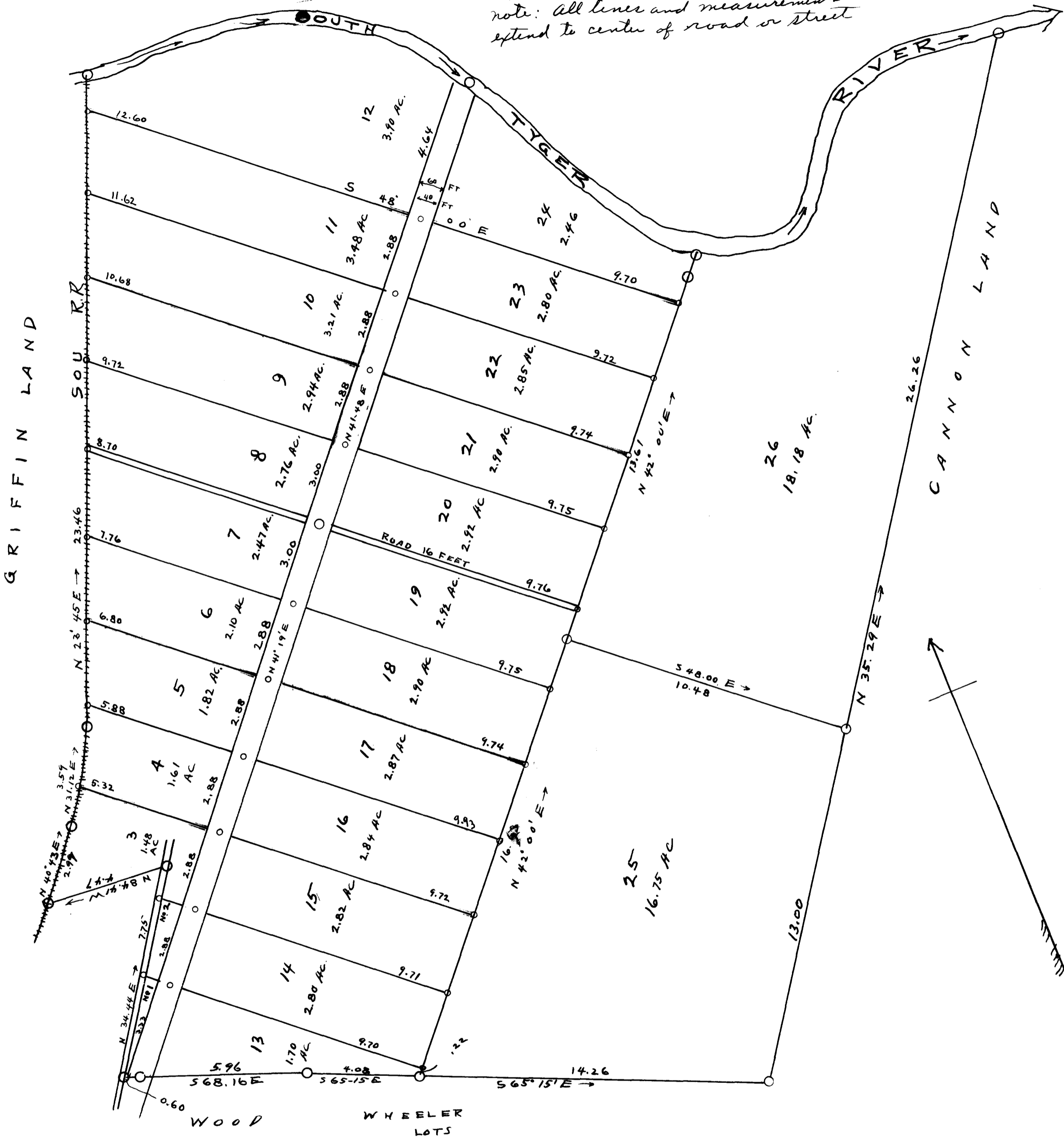


EX PARTE
MRS. M. E. GROCE ESTATE

Scale: - 1 inch = 3 chains
note: all lines and measurements
extend to center of road or street



Wheeler - Griffin land on
 Duncan - Lyman Road
 Estate of Mrs. M. E. Groce, dec'd.
 Spartanburg County, S. C.
 Surveyed and laid out Sept. 26-1923
 J. H. Atkins, Surv.

Registered, Certified & Examined May 24-1924