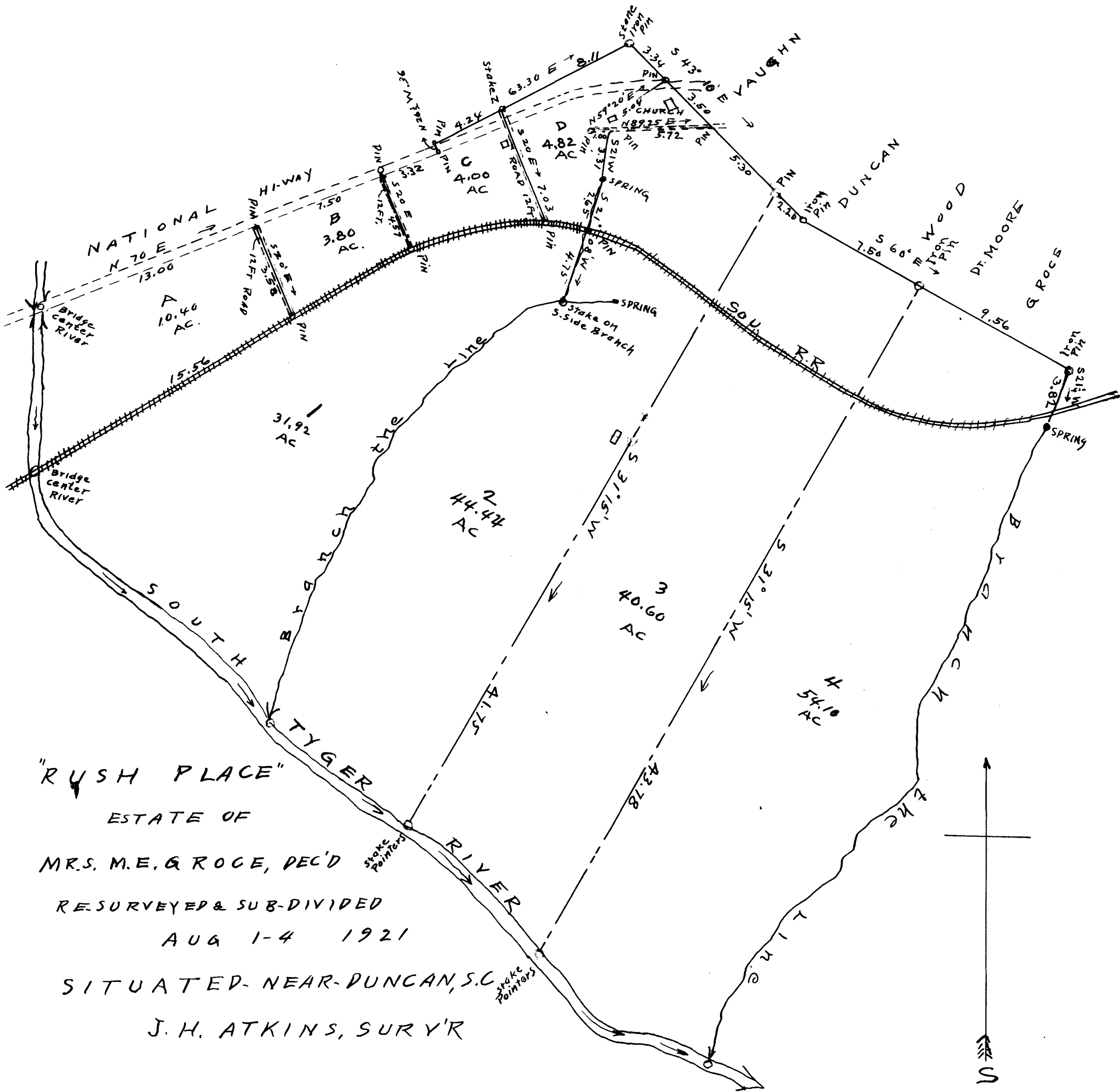


EX PARTE
MRS. M. E. GROCE ESTATE



"RUSH PLACE"
 ESTATE OF
 MRS. M. E. GROCE, DEC'D
 RESURVEYED & SUB-DIVIDED
 AUG 1-4 1921
 SITUATED NEAR DUNCAN, S.C.
 J. H. ATKINS, SURV'R

SCALE: - 1 INCH = 5 CHAINS

Registered, Certified + Examined May 24-1924