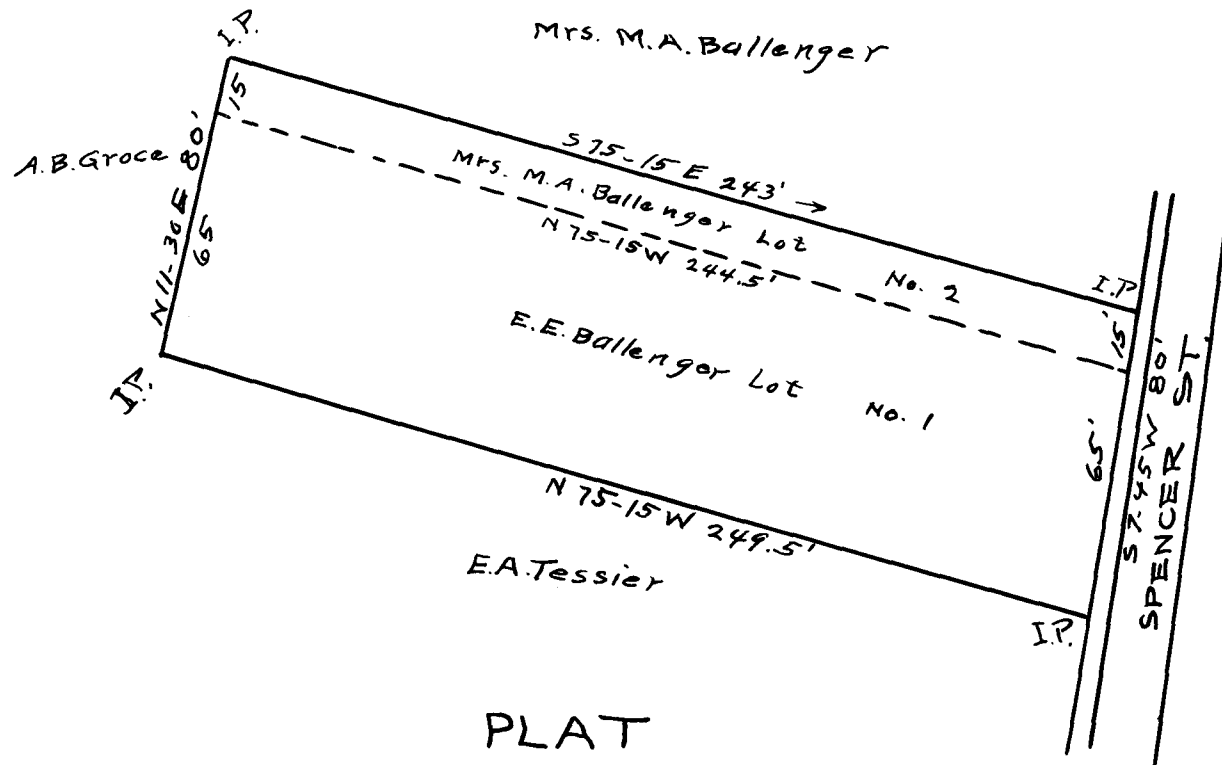


EX PARTE
DAN BROWN



PLAT
OF
E.E. ^{and} M.A. BALLENGER LOTS.
DUNCAN, SPARTANBURG COUNTY, S.C.
W.A. Christopher, SUR., DUNCAN, S.C., MAY 3-'24
scale 1" = 50'

Registered, Certified & Examined June 7-1924