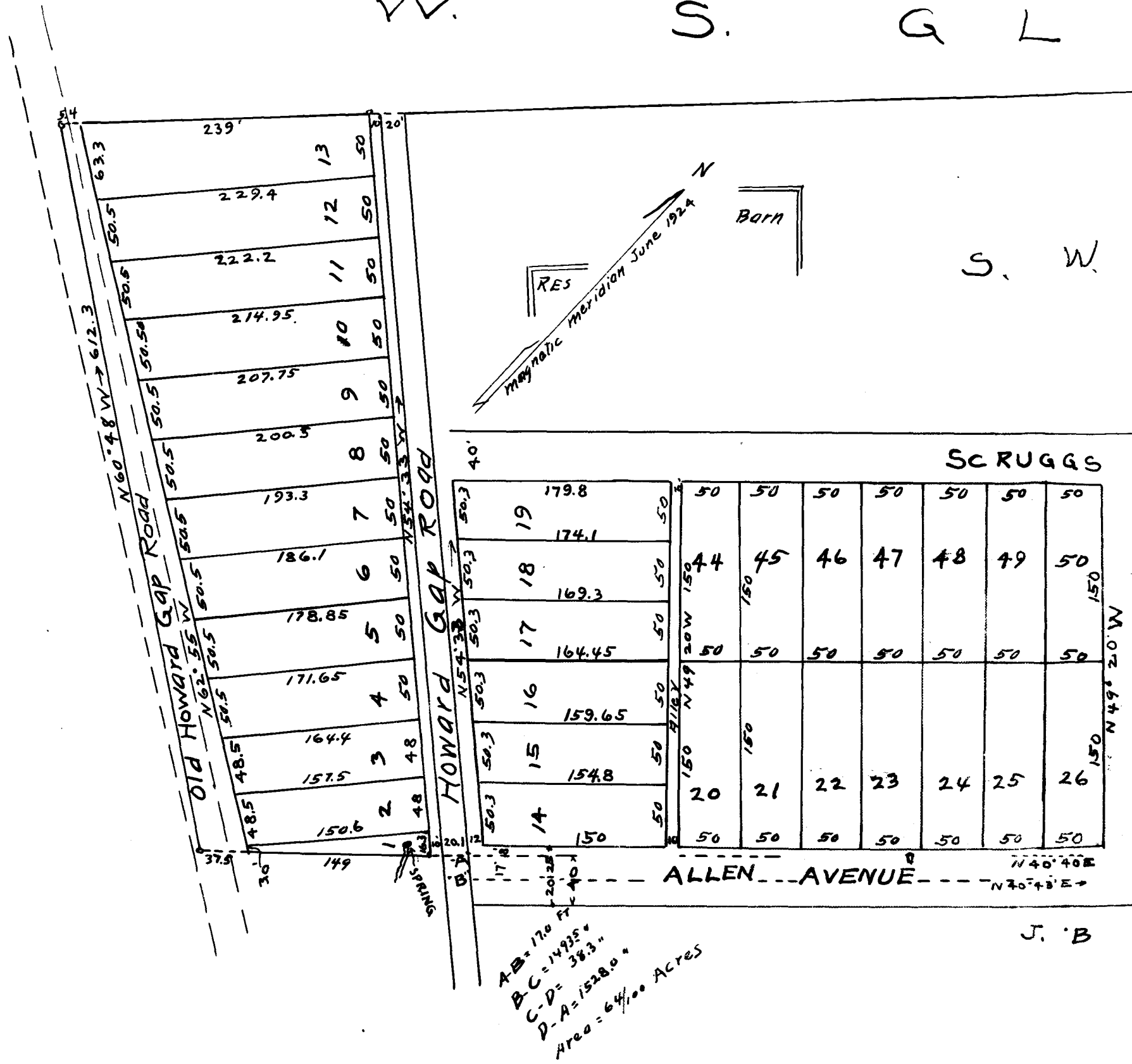


EX PARTE
ELIZABETH F. SCRUGGS

W. S. G L



subdivision
of
Property of Seth W. SCRUGGS
N.W. City limits
City of Spartanburg S.C.
June 20-1924
H. Stribling C.E.
scale 100" = 1 inch

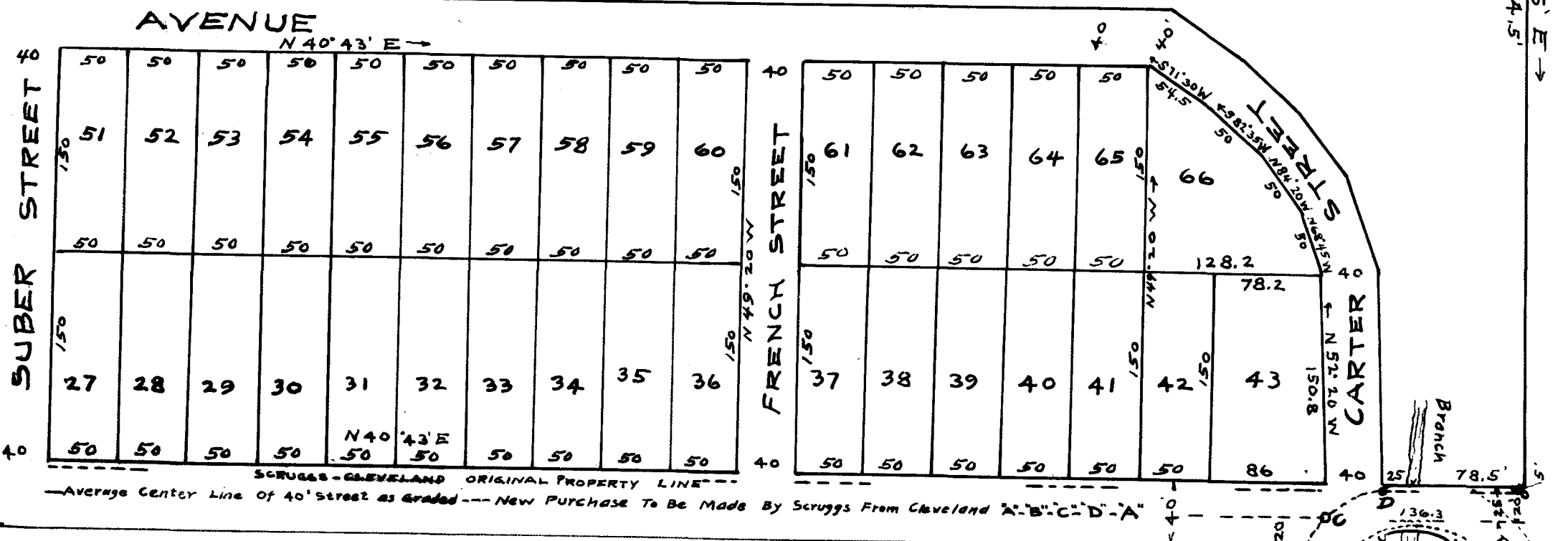
E N N

N 38° 30' E
TOTAL 1963.5

S C R U G G S

J. B. CLEVELAND

S 49° 45' E
674.5'



CLEVELAND

Sold by
Newbury Realty & Auction Company
Spartanburg, S.C.
Phone 1060

Registered, Certified & Examined June 30-1924