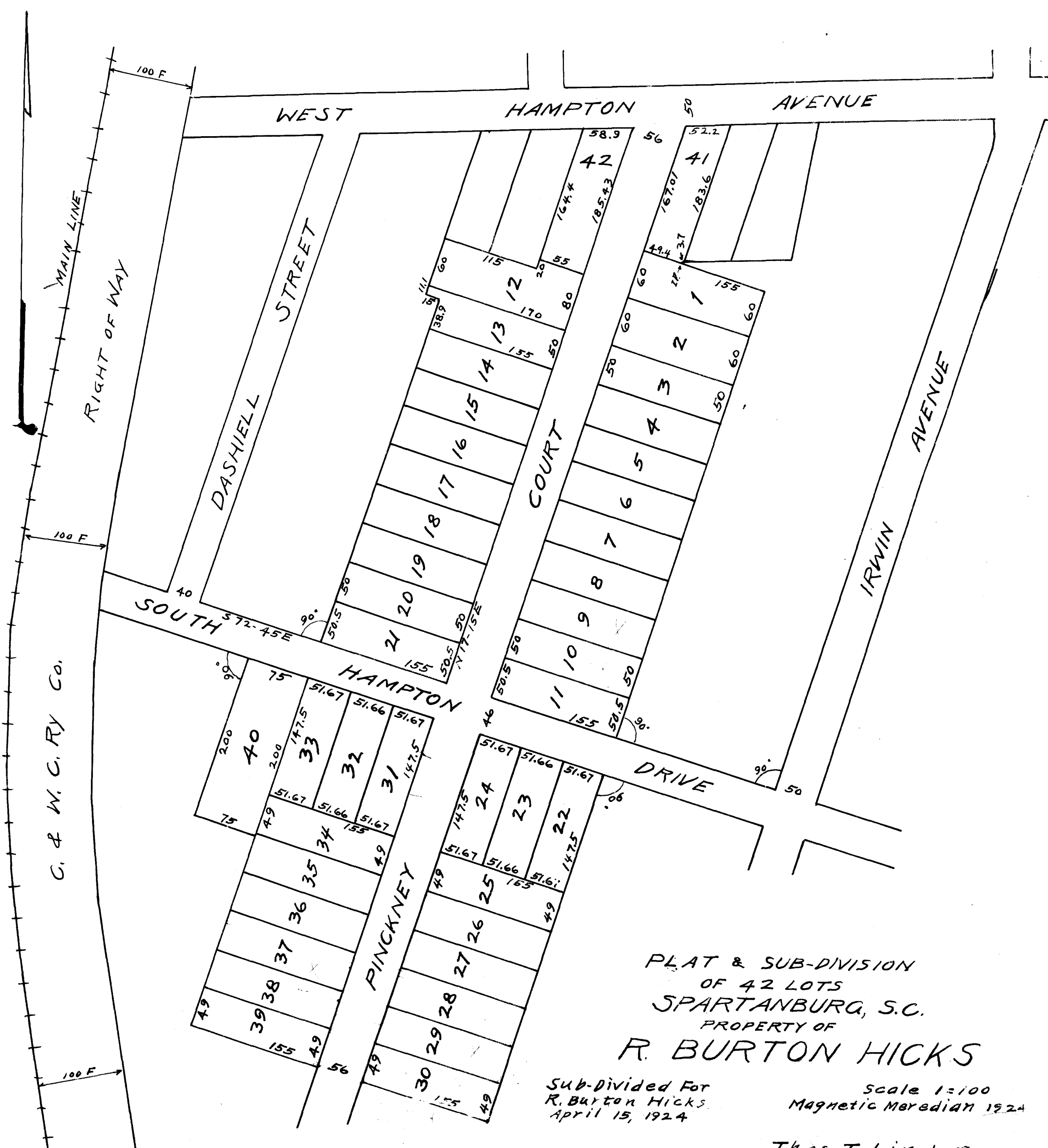


EX PARTE
R. BURTON HICKS



PLAT & SUB-DIVISION
 OF 42 LOTS
 SPARTANBURG, S.C.
 PROPERTY OF
R. BURTON HICKS

Sub-Divided For
 R. Burton Hicks
 April 15, 1924

Scale 1:100
 Magnetic Meridian 1924

Thos. T. Linder
 Surveyor
 Spartanburg, S.C.

Registered, Certified & Examined August 13-1924