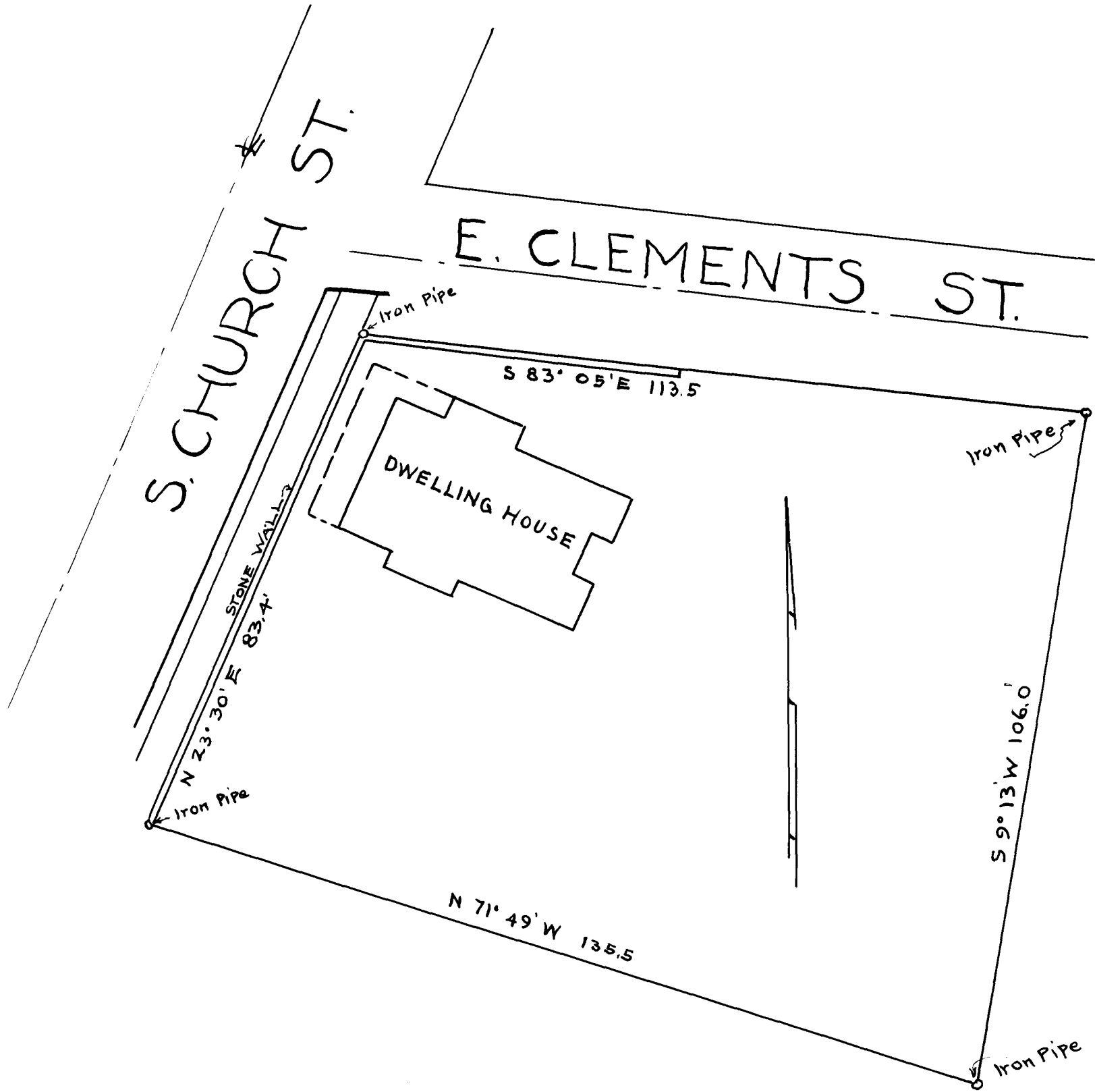


EX PARTE  
ARCH B. CALVERT



PROPERTY OF  
ARCH. B. CALVERT  
LOCATED IN THE CITY OF  
SPARTANBURG  
SPARTANBURG COUNTY S.C.

SCALE 1" = 20'

SEPT. 4, 1924

A. R. MEM  
GUIDE: MR. CALVERT

W. N. Willis Engineers - Spartanburg, S.C.

*Registered, Certified + Examined Sept. 5-1924*