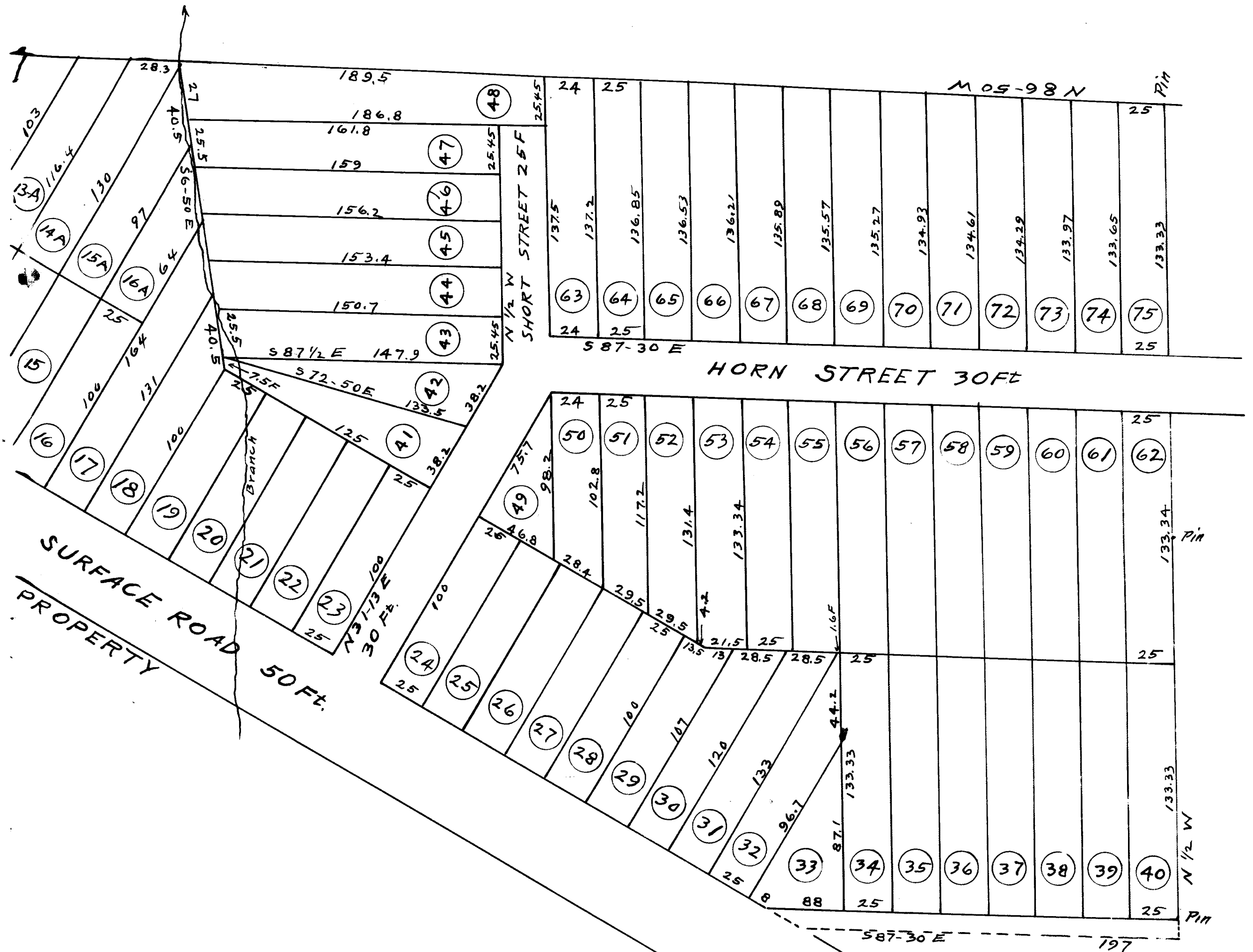


PROPERTY OF  
**J. F. FLOYD**  
 THE HATTIE H. TURNER PLACE  
 AT R. R. SHOPS AND NEAR  
**SPARTANBURG**  
 SPARTANBURG COUNTY, S. C.  
 AUG, 23, 1924

2" = 100 FT.

PREPARED FOR

**THE INTERSTATE LAND AUCTION CO.**  
 SPARTANBURG, S. C.



Thos. T. Linder  
S. C. Registered Land Surveyor  
Spartanburg, S. C

*Registered, Certified & Examined Sep. 27-1924*

7