

CITY PARK HEIGHTS

BOMAR & CALVERT'S HOLTZHAUSER PLACE

ADJOINING THE CITY OF

SPARTANBURG

SPARTANBURG CO.-S.C.

Subdivided for

SOUTHERN LAND AUCTION CO.

Ashville N.C.

Scale 1"=100'

Jan. 17-1916

W.H. Willis - Civ. Engr.

Spart. S.C.

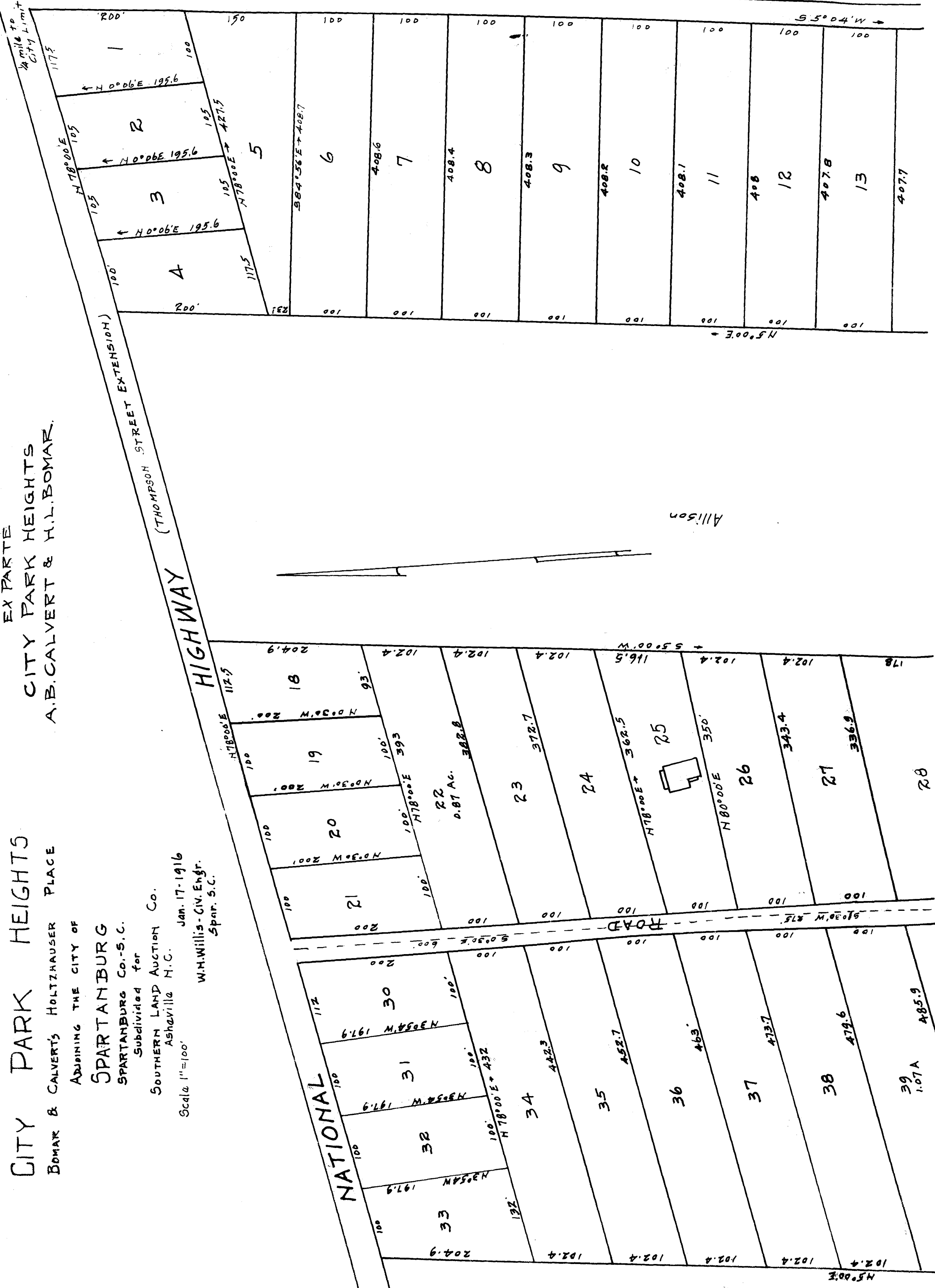
EX PARTE

CITY PARK HEIGHTS

A.B. CALVERT & H.L. BOMAR.

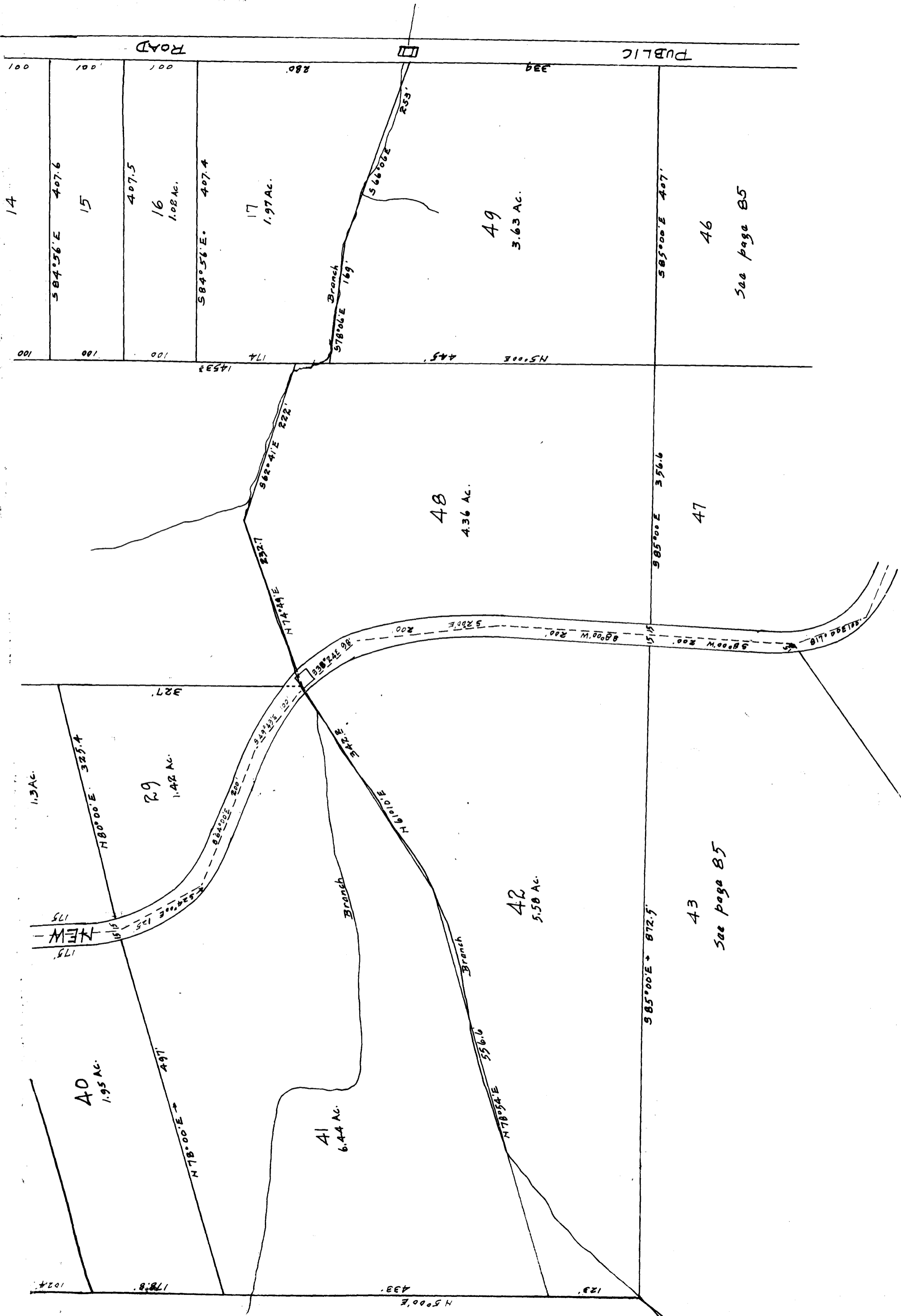
(THOMPSON STREET EXTENSION)

HIGHWAY



Registered, Certified & Examined Sep. 30-1922

N.L. Bennett



14

S84°56'E 407.6

15

407.5

16
1.08 AC.

S84°56'E 407.4

17
1.97 AC.

Branch
578°06'E 169'

566°06'E
253'

49

3.63 AC.

PUBLIC ROAD

46

See page B5

48

4.36 AC.

47

1.3 AC.

H80°00'E 325.4

29

1.42 AC.

NEW

327'

40

1.95 AC.

N78°00'E 497.1

41

6.44 AC.

Branch

N74°24'E 232.7

N74°24'E 232.7

S82°41'E 222'

S82°41'E 222'

42

5.58 AC.

Branch

N5°00'E 433'

N78°54'E 556.6

123'

S85°00'E 872.5

43

See page B5

S85°00'E 356.6

S85°00'E 407'

100

100

100

1453'

174

445'

N5°00'E

280

339

