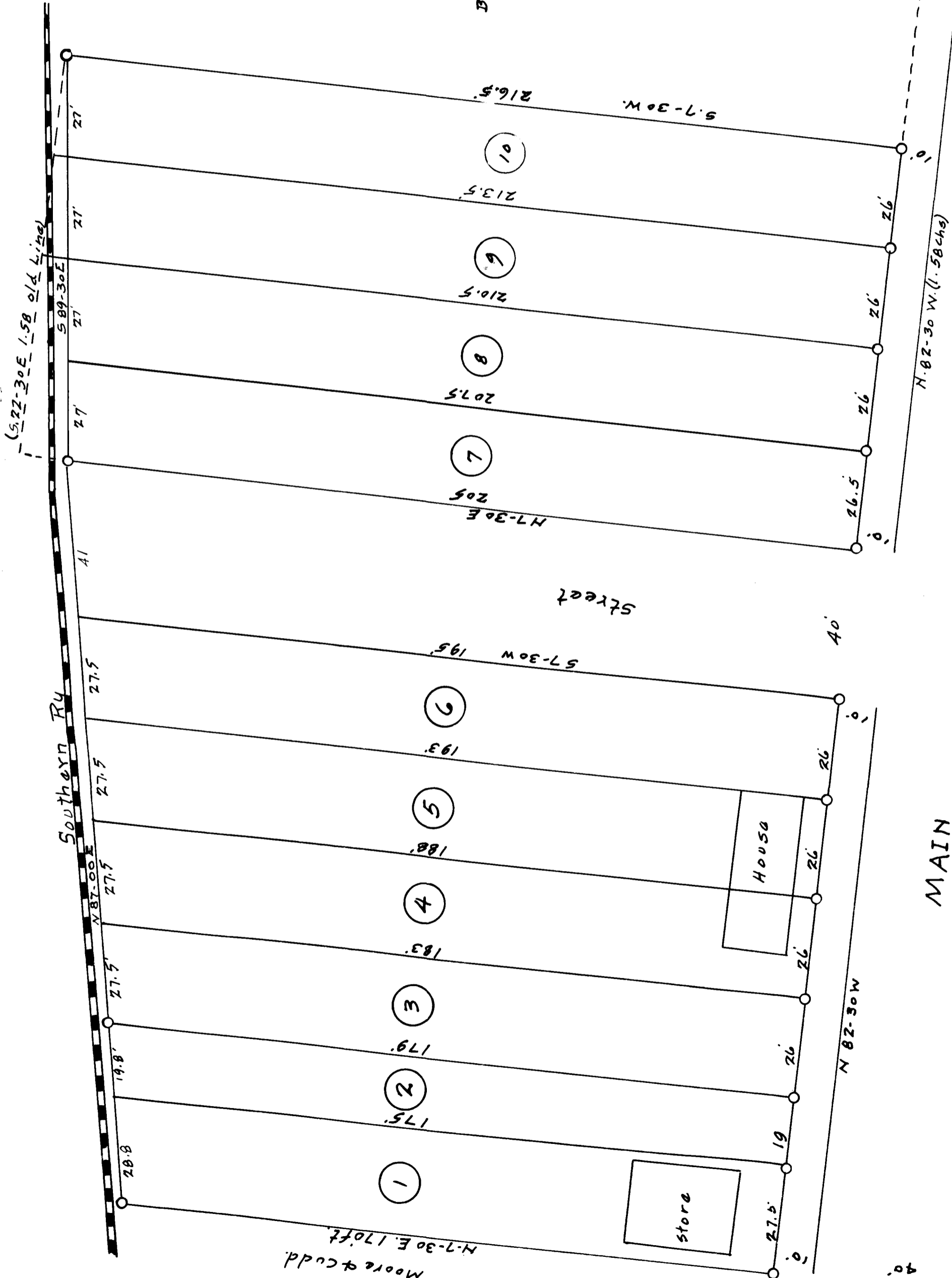


EX PARTE
E. J. ZIMMERMAN ESTATE



B. Smith

STREET

NATIONAL HIGHWAY

MAIN

PLAT

OF

E. J. ZIMMERMAN ESTATE
DUNCAN, SOUTH CAROLINA

Subdivided for Interstate Land Auction Co.
W.A. Christopher, Sur. Sept. 12th, 1923.

Scale 1" = 25'

Run by the J.K. Dickson Plat. 1873 Var 2020' Dif. in Compasses, 20'

Registered, Certified & Examined October 3rd 1924