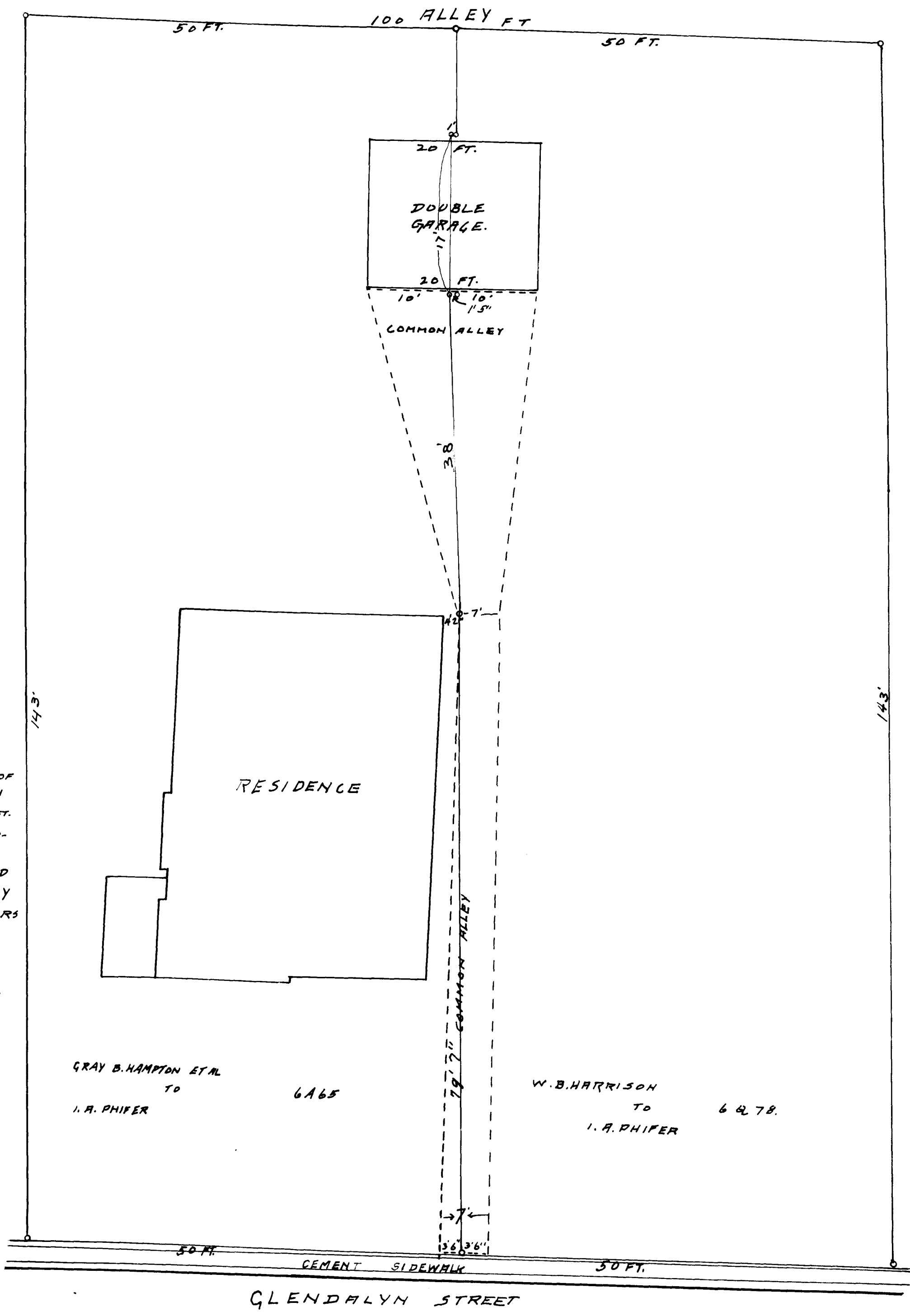


EX PARTE
I. A. PHIFER



PLAT OF PROPERTY OF
I. A. PHIFER ON SOUTH
SIDE OF GLENDALYN ST.
SHOWING WHAT POR-
TIONS OF THE TWO
LOTS ARE RESERVED
AS A COMMON ALLEY
FOR USE OF OWNERS
OF BOTH LOTS.
OCT. 10 1924.

I. A. Phifer

GRAY B. HAMPTON ET AL
TO
I. A. PHIFER
6465

W. B. HARRISON
TO
I. A. PHIFER
6478.

GLENDALYN STREET

Registered, certified & Examined October 10th 1924