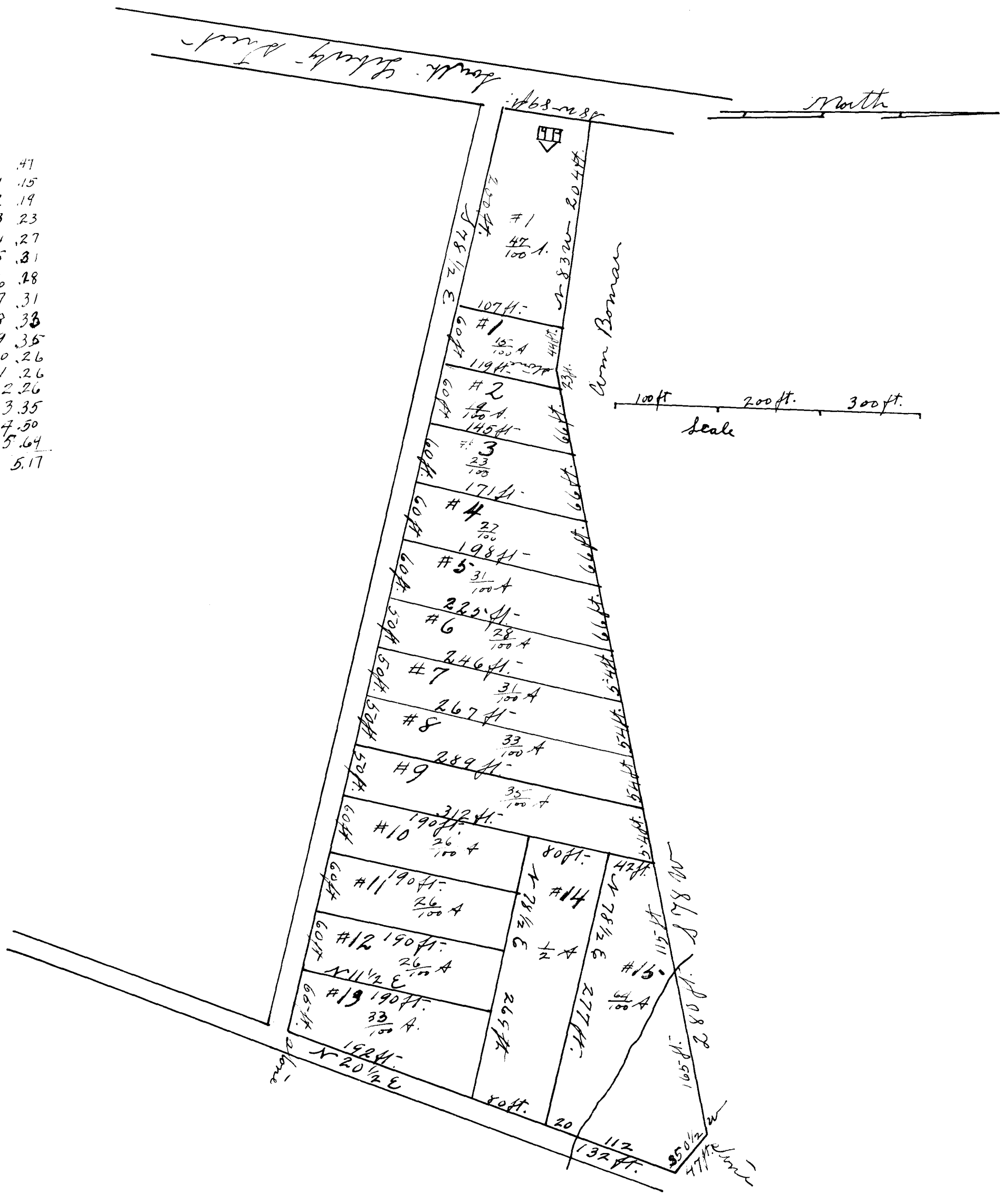


EX PARTE  
 "TRAYLOR PLACE"  
 S. T. McCRAVY.

- # 1 .47
- 1 .15
- 2 .19
- 3 .23
- 4 .27
- 5 .31
- 6 .28
- 7 .31
- 8 .33
- 9 .35
- 10 .26
- 11 .26
- 12 .26
- 13 .35
- 14 .50
- 15 .64
- 5.17



The above is a true representation of a lot of land lying on South Liberty Street & has such metes & bounds as set forth. By request of S. T. McCravay it was subdivided into lots as above & surveyed Sept. 14<sup>th</sup> 1891  
 A. J. Floyd  
 Surveyor

Registered, Certified & Examined October 18<sup>th</sup> 1924