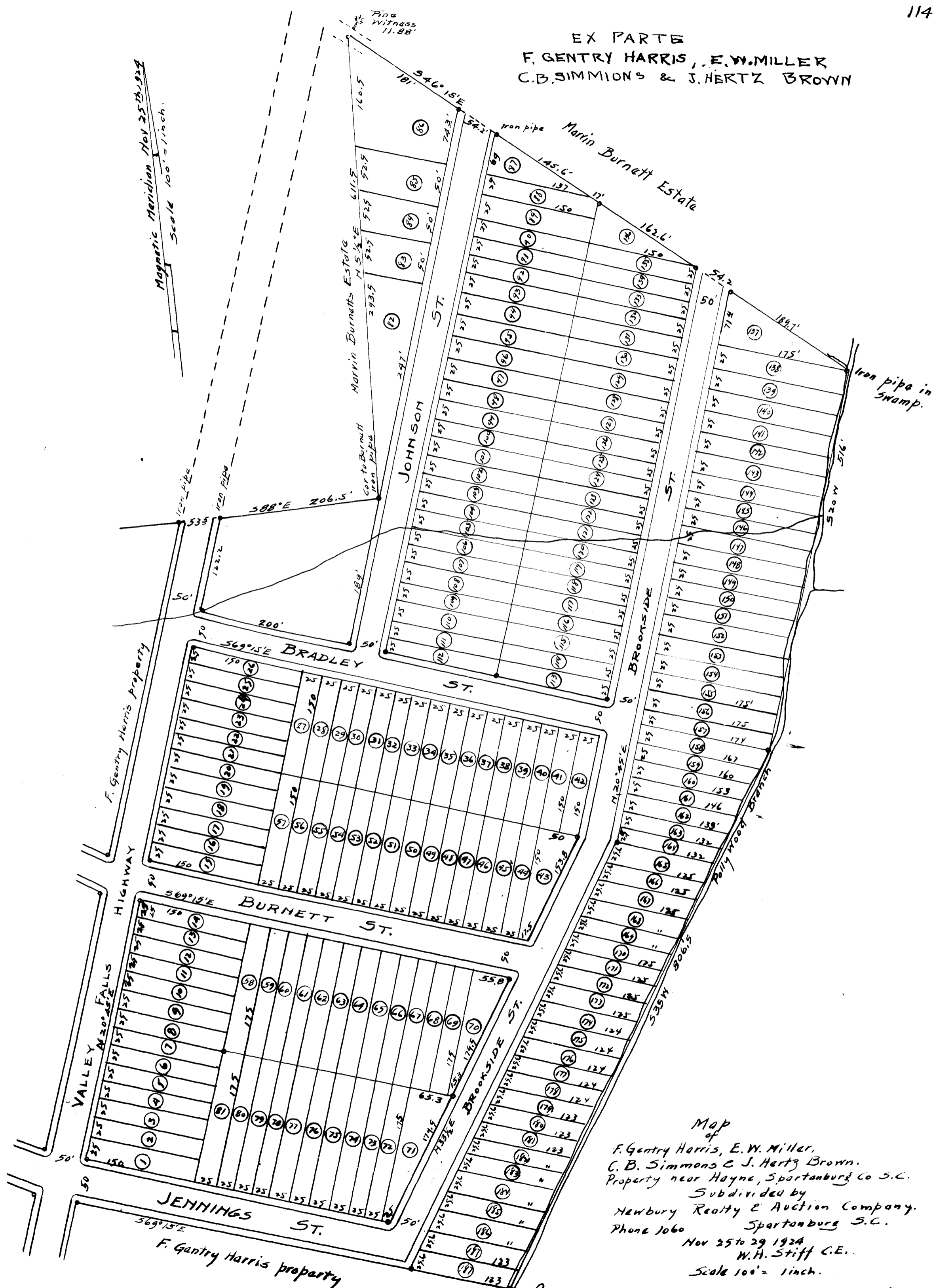


EX PARTE
F. GENTRY HARRIS, E. W. MILLER
C. B. SIMMONS & J. HERTZ BROWN



Magnetic Meridian Nov 25th 1924
Scale 100' = 1 inch.

Map of
 F. Gentry Harris, E. W. Miller,
 C. B. Simmons & J. Hertz Brown.
 Property near Hayne, Spartanburg Co S.C.
 Subdivided by
 Newbury Realty & Auction Company.
 Phone 1060 Spartanburg S.C.
 Nov 25 to 29 1924
 W. H. Stiff C.E.
 Scale 100' = 1 inch.

Registered, Certified & Examined
Dec. 18-1924

Branch