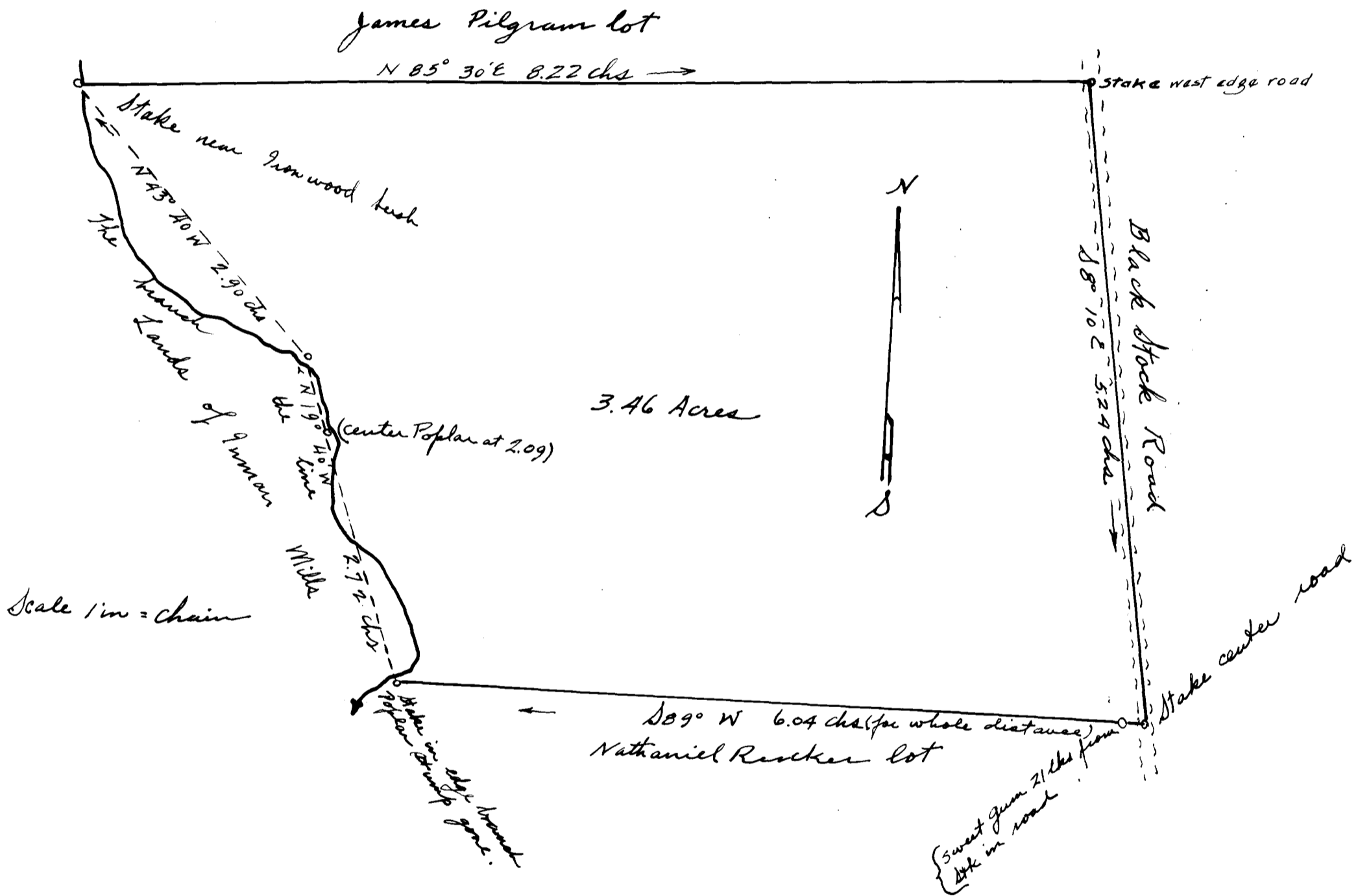


EX PARTE
LEE MITCHAM



Spartanburg County }
State of South Carolina } The above plat represents some lots of land belonging to Lee Mitcham
and situated near the town of Inman S.C. - They contain three and 46/100
acres. The line next to James Pilgram's lot is an agreed line by and between
said James Pilgram and Lee Mitcham.
This land is covered by deed from J.H. Ballanger dated Feb. 9th 1920 and recorded
at Spartanburg S.C. in Office R.M.C. in Vol. 6-74, page 164; and by deed from Della B.
Ballanger as recorded at Spartanburg S.C. in Office of R.M.C. in Vol. 6-F, pg 261.
Resurveyed by me Sept 1924.

M.E. Johnson
Surveyor

Registered, Certified & Examined Dec. 20-1924