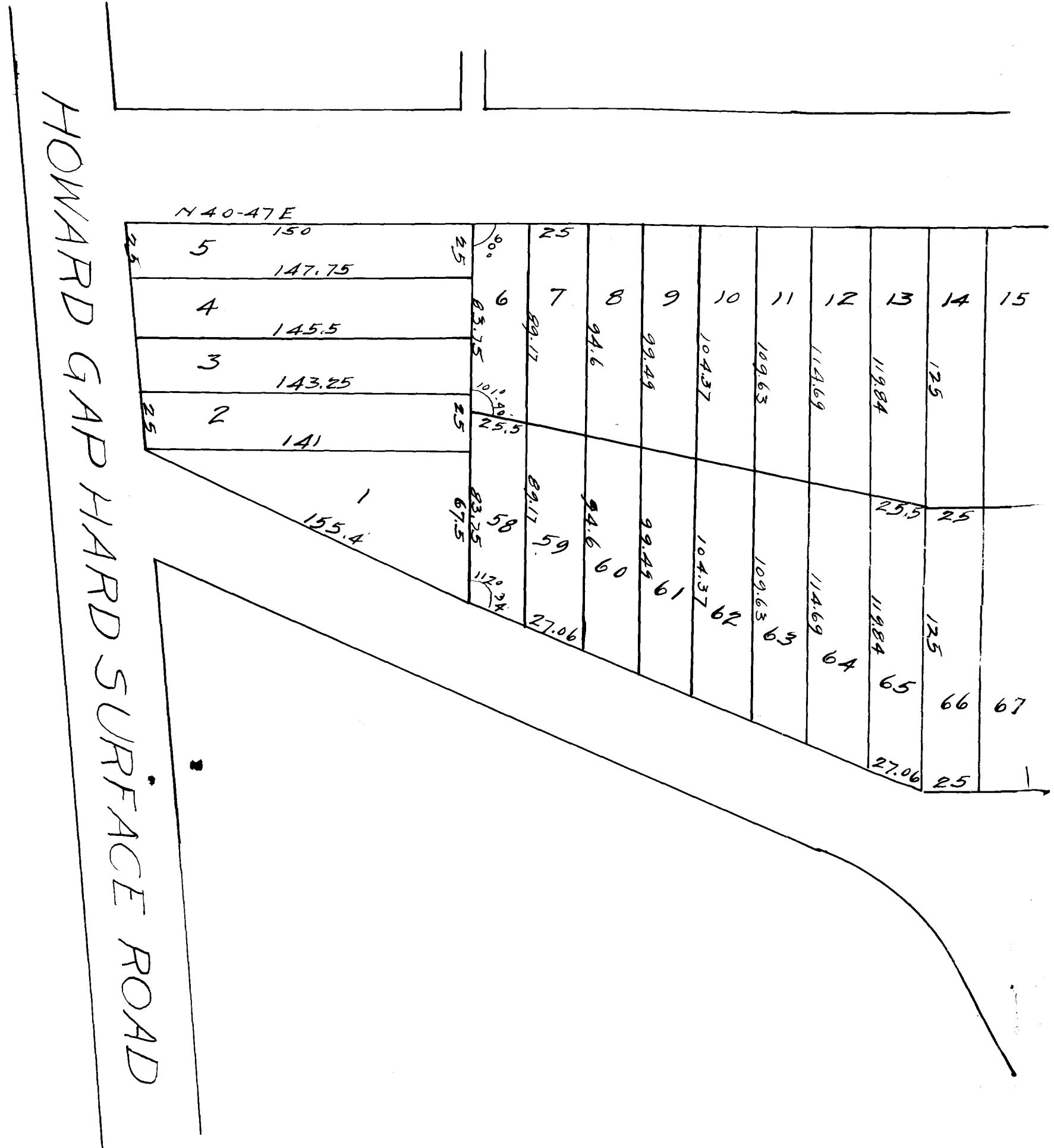


118

EX PARTE  
JOHN B. CLEVELAND

See Page 119



PROPERTY OF  
**J. B. CLEVELAND**  
 HIS HOME TRACT  
 IN THE NORTHERN PART OF  
**SPARTANBURG**  
 SPARTANBURG COUNTY, S.C.  
 OCT. 20, 1924  
 RE-SUB-DIVIDED NOV. 15, 1924

FOR  
**INTERSTATE LAND AUCTION Co.**  
 SPARTANBURG, S.C.

SCALE  
2 1/2" = 100 FT.

Registered, Certified & Examined Dec. 24-1924

Thos. T. Linder, L.S.  
Spartanburg, S.C.

ALLEN AVENUE 50ft.

16	17	18	19	20	21	22	23	24	25	26	27	28	29	30	31	32	33	34	35	36	37	38	25
																						125	
N 40-47E																						25	
																						125	
68	69	70	71	72	73	74	75	76	77	78	79	80	81	82	83	84	85	86	87	88	89	90	25

See Page 119

SWANEE STREET 40ft.

52	118	119	120	121	122	123	124	125	126	127	128	129	130	131	132	133	134	135	136	137	25	
																				119.7		
N 40-47E																				25.37		
																				119.8		
100	101	102	103	104	105	106	107	108	109	110	111	112	113	114	115	116	117	118	119	120	25	
																						119.8
SWANEE STREET 40ft.																						119.8
																						119.8
52	118	119	120	121	122	123	124	125	126	127	128	129	130	131	132	133	134	135	136	137	25	
																						119.8
CLEVELAND PARK DRIVE																						119.8
																						119.8

See Page 119