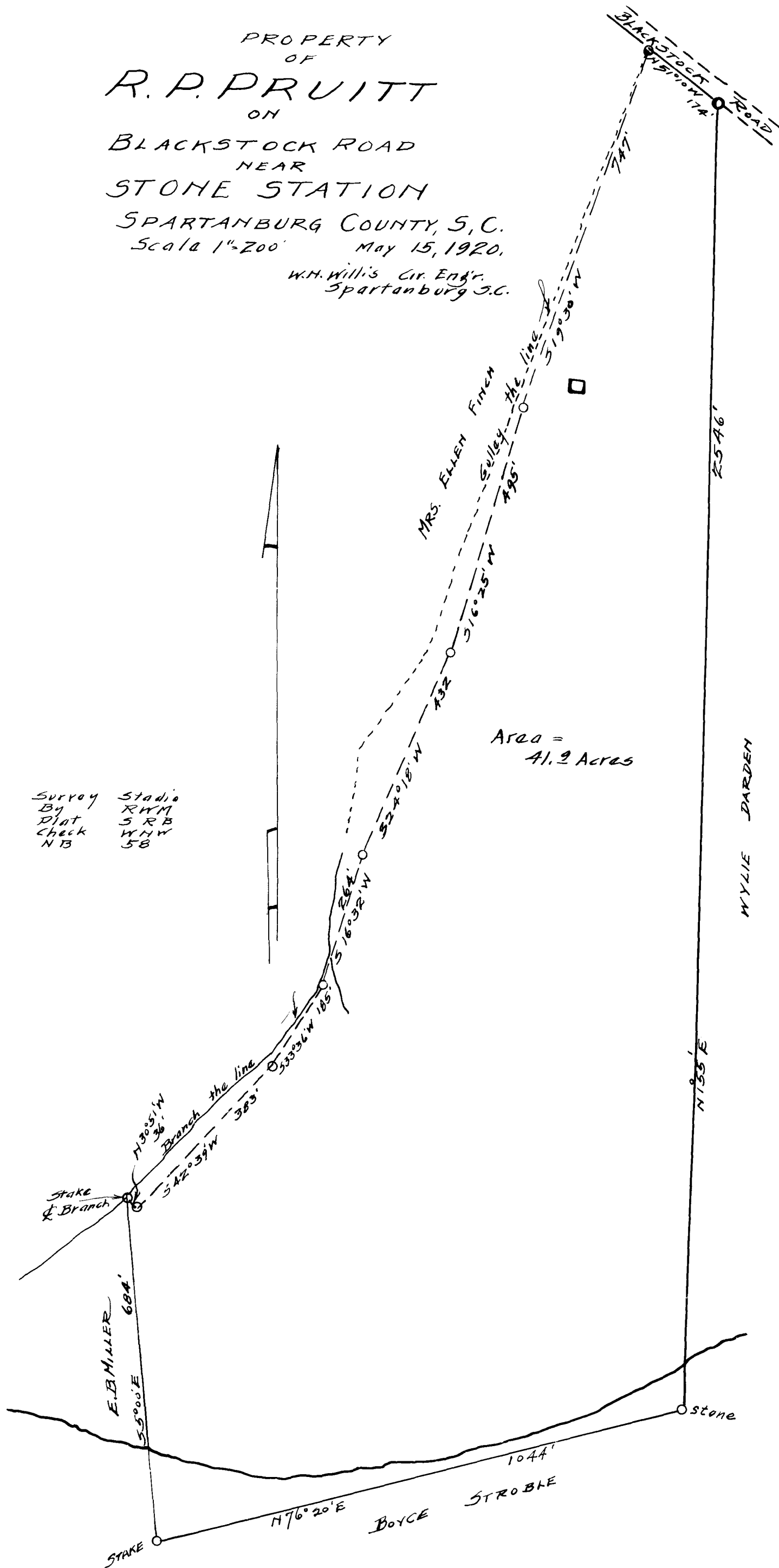


EX PARTE
R. P. PRUITT

PROPERTY
OF
R. P. PRUITT
ON
BLACKSTOCK ROAD
NEAR
STONE STATION

SPARTANBURG COUNTY, S.C.
Scale 1"=200' May 15, 1920.

W.H. Willis Civ. Engr.
Spartanburg S.C.



Registered, Certified & Examined Jan 5, 1925