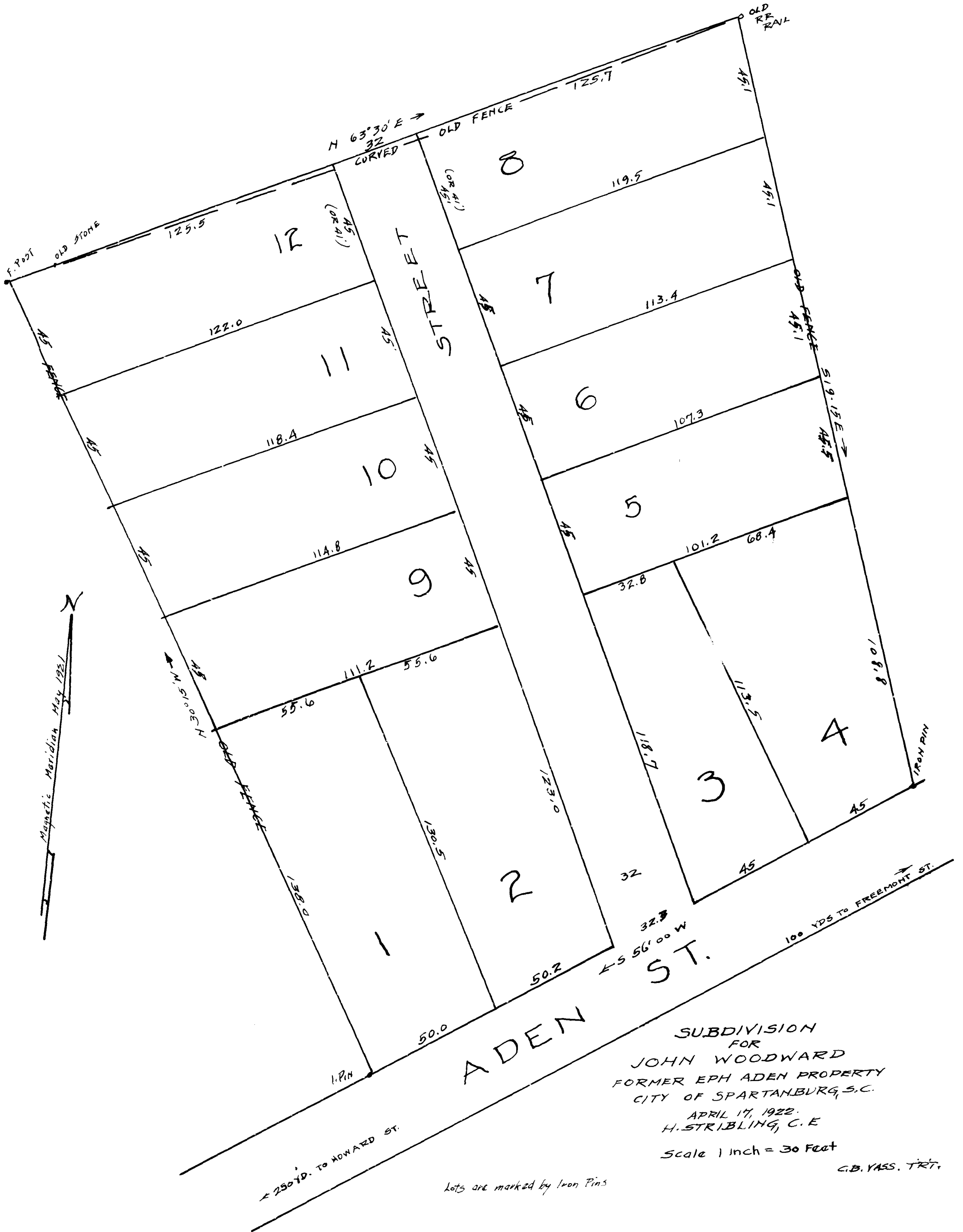


EX PARE
JOHN WOODWARD



SUBDIVISION
FOR
JOHN WOODWARD
FORMER EPH ADEN PROPERTY
CITY OF SPARTANBURG, S.C.
APRIL 17, 1922.
H. STRIBLING, C.E.
Scale 1 inch = 30 Feet
C.B. YASS, TRT.

lots are marked by Iron Pins

Registered, Certified & Examined July 25-1925