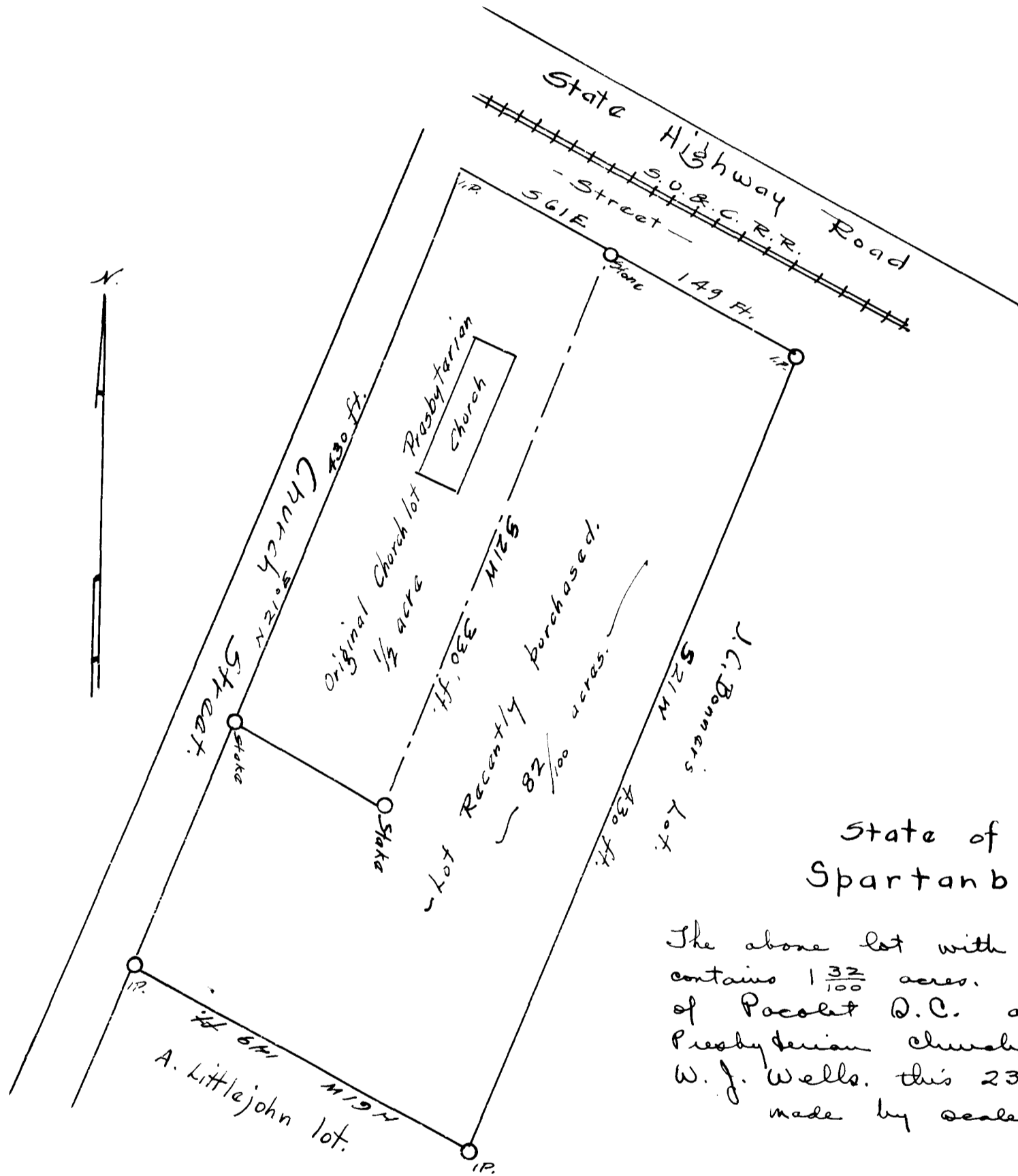


EX PARTE
PRESBYTERIAN CHURCH OF PACOLET



State of South Carolina }
Spartanburg County }

The above lot with its metes and bounds contains $1\frac{32}{100}$ acres. Situated in the town of Pacolet D.C. and belong to the Presbyterian Church - Surveyed by W. J. Wells. this 23rd day of Jan'y. 1925. made by scale of 50' per 1 inch.

Registered, Located & Examined March 30-1925