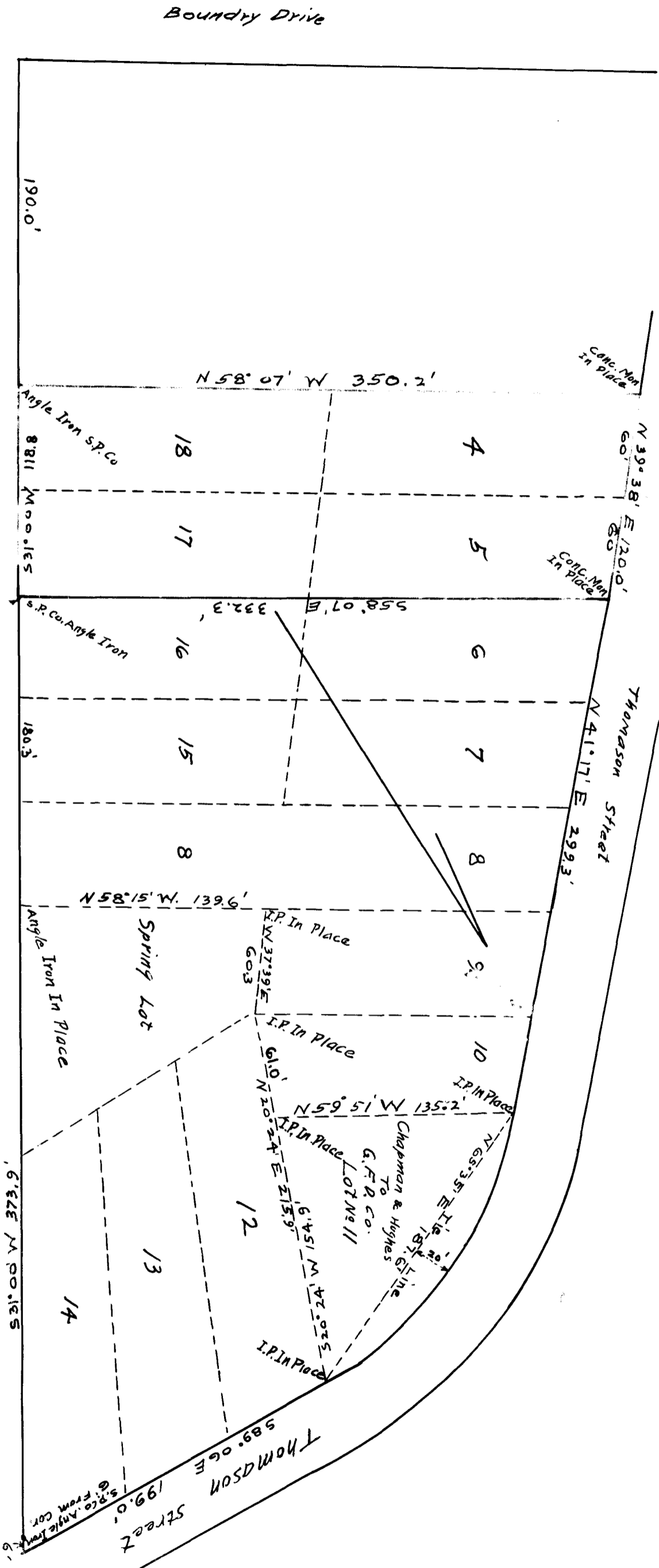


EX PARTE  
ELIZABETH P. LYNCH  
SOUTHERN POWER CO.



888.0'

SOU. POWER CO. & GREAT FALLS POWER CO.

LOTS NEAR SPARTANBURG, S.C.

CONVEYED BY

L. G. CHAPMAN & HERMAN HUGHES

Mrs. Elizabeth P. Lynch  
Surveyed by C.R. Claywell Nov 24, '25 drawn by J.C. 11-30-25

Registered, Certified & Examined Dec. 5-1925 at 3:40 P.M.