

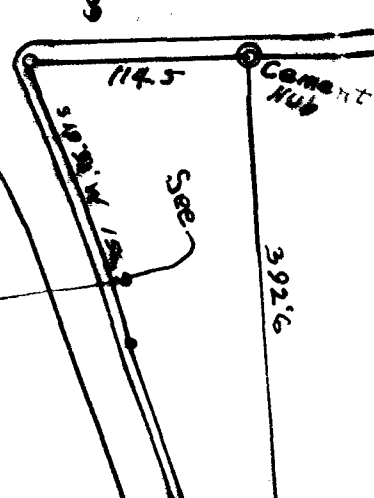
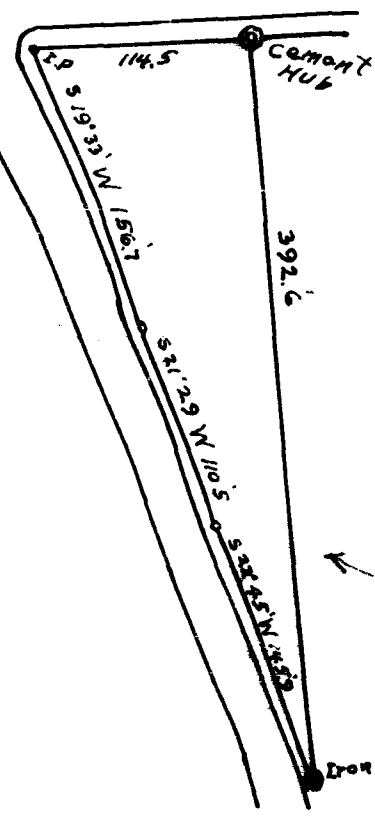
# MAP

OF  
 GARLINGTON ESTATES  
 A PART OF THE DUNCAN PROPERTY ADJOINING  
 DUNCAN PARK

SUBDIVIDED AND DEVELOPED  
 by

NEWBURY REALTY AND AUCTION CO.  
 OFFICES OVER KENNEDYS DRUG STORE PHONE 1060  
 SPARTANBURG SOUTH CAROLINA

NOVEMBER 1<sup>st</sup> 1924  
 Scale 1" = 1200' Declination 00° 11' W. W. H. Stiff C.E.



Survey certified & Examined April 14-1925