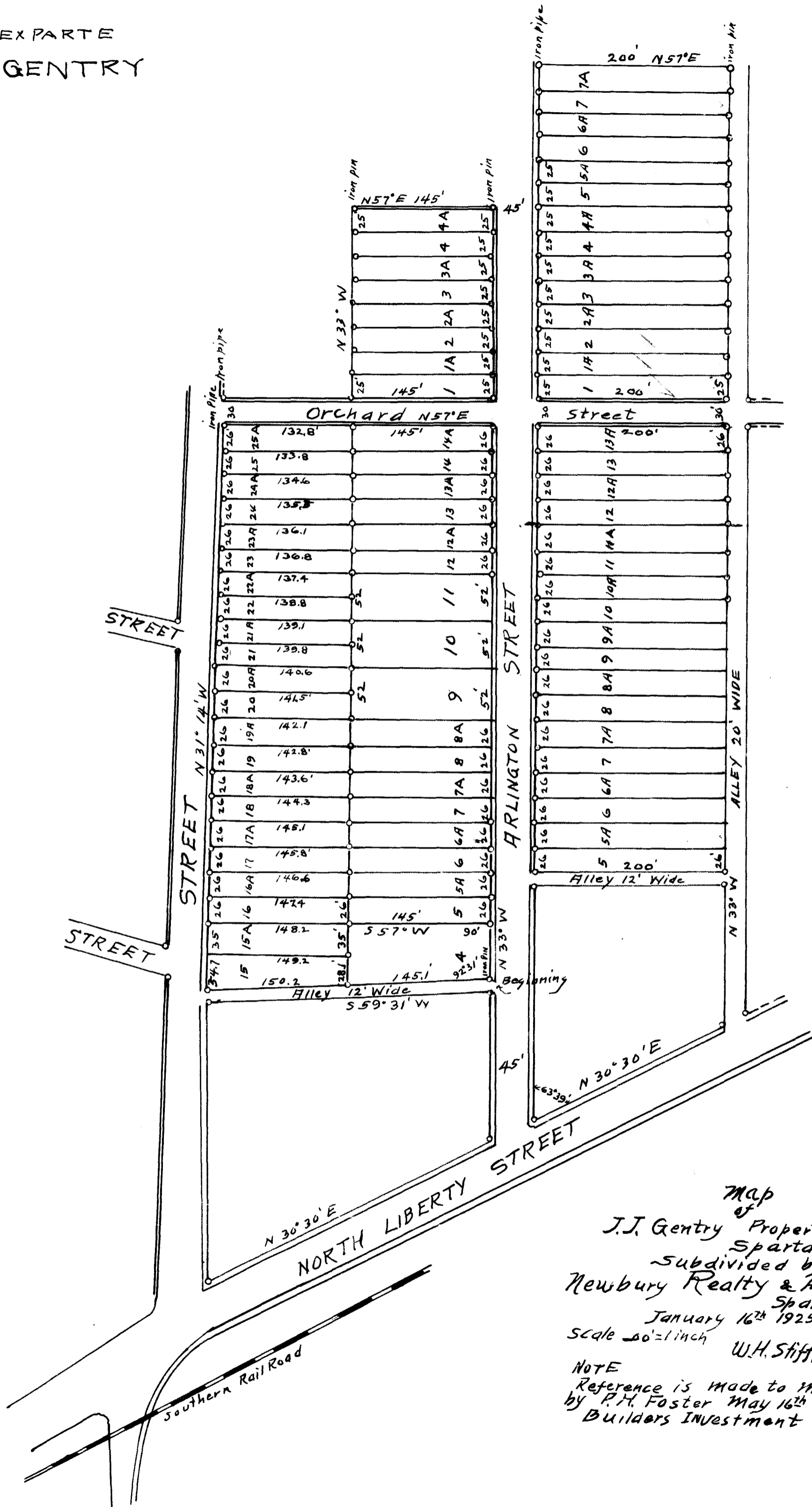


EX PARTE
J. J. GENTRY



Map
of
J.J. Gentry Property
Spartanburg, S.C.
Subdivided by
Newbury Realty & Auction Company
Spartanburg, S.C.
January 16th 1925
Scale 20' = 1" Declination 0° 18' W
U.H. Stiff, C.E.

NOTE
Reference is made to map & survey
by P.H. Foster May 16th 1907 for the Home
Builders Investment Company

Registered, Certified & Examined July 25-1925 at 10⁰⁰ AM