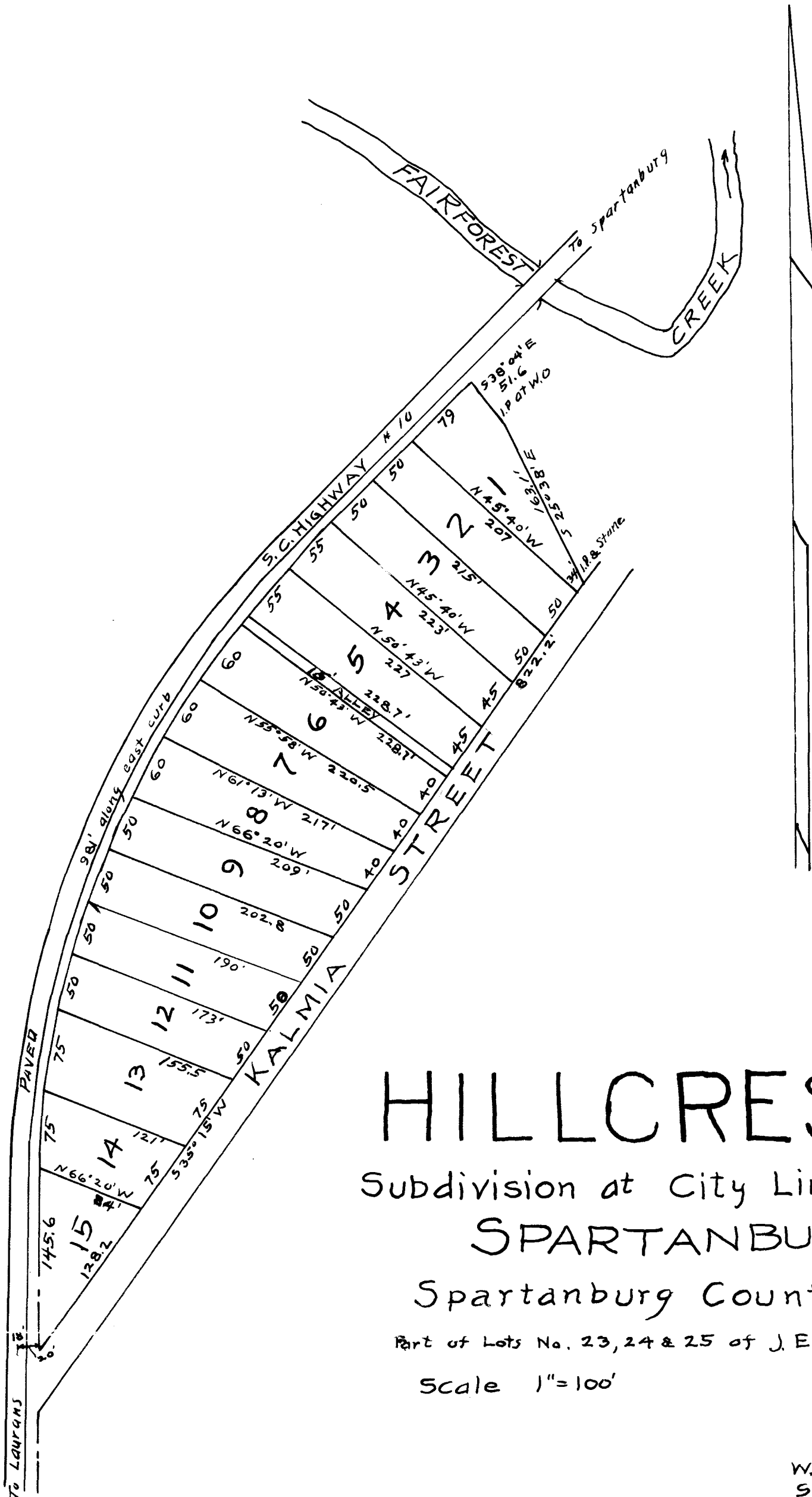


EX PARTE
HILLCREST



HILLCREST

Subdivision at City Limits of
SPARTANBURG

Spartanburg County, S.C

Part of Lots No. 23, 24 & 25 of J. E. Bomar Est.

Scale 1"=100'

8-13-24

W.N. Willis - Engrs.
Spartanburg, S. C

See plat Sept. 12-'13

Registered, Certified + Examined Aug 10-1925 at 9:50 A.M.