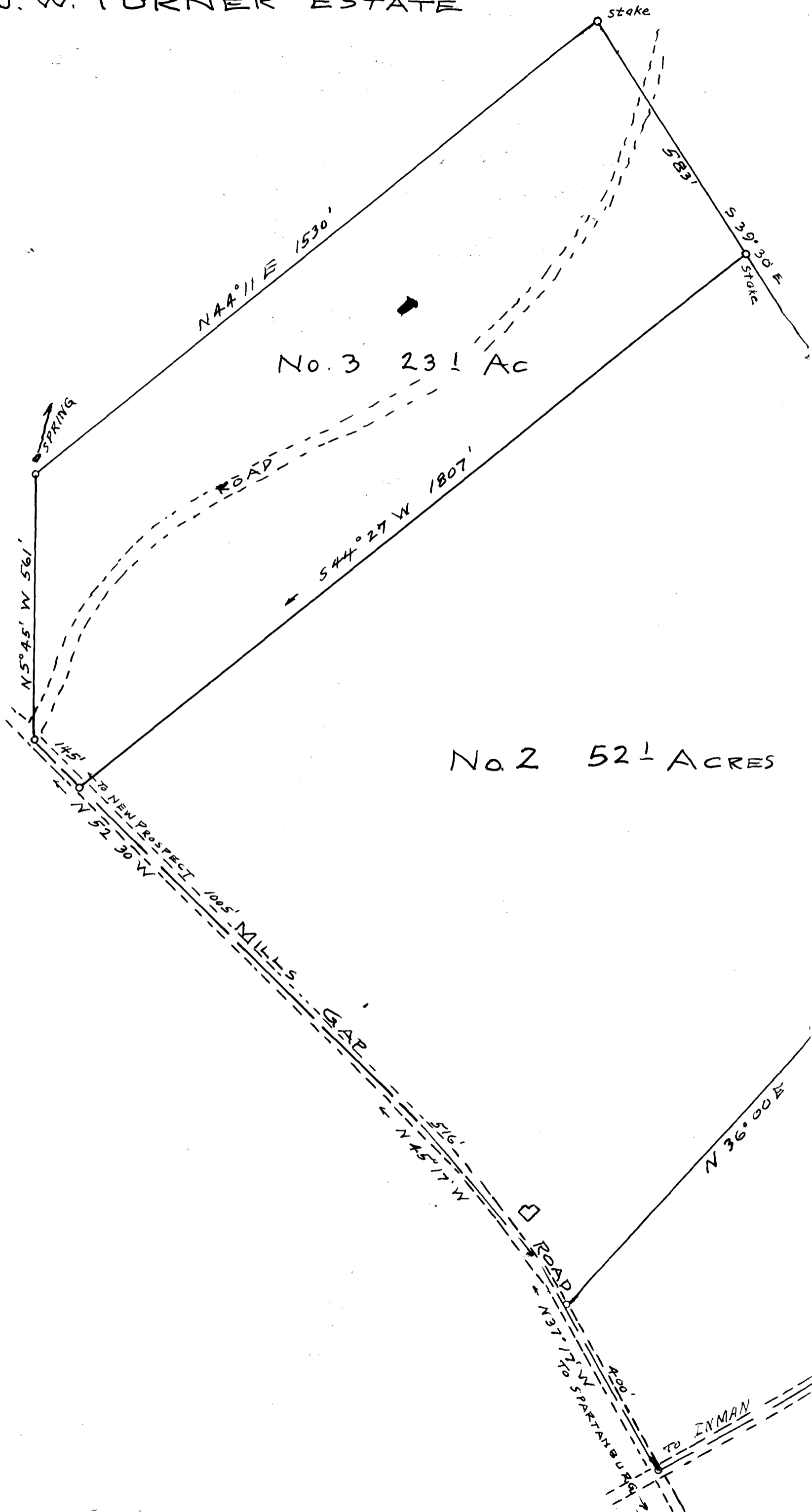


64

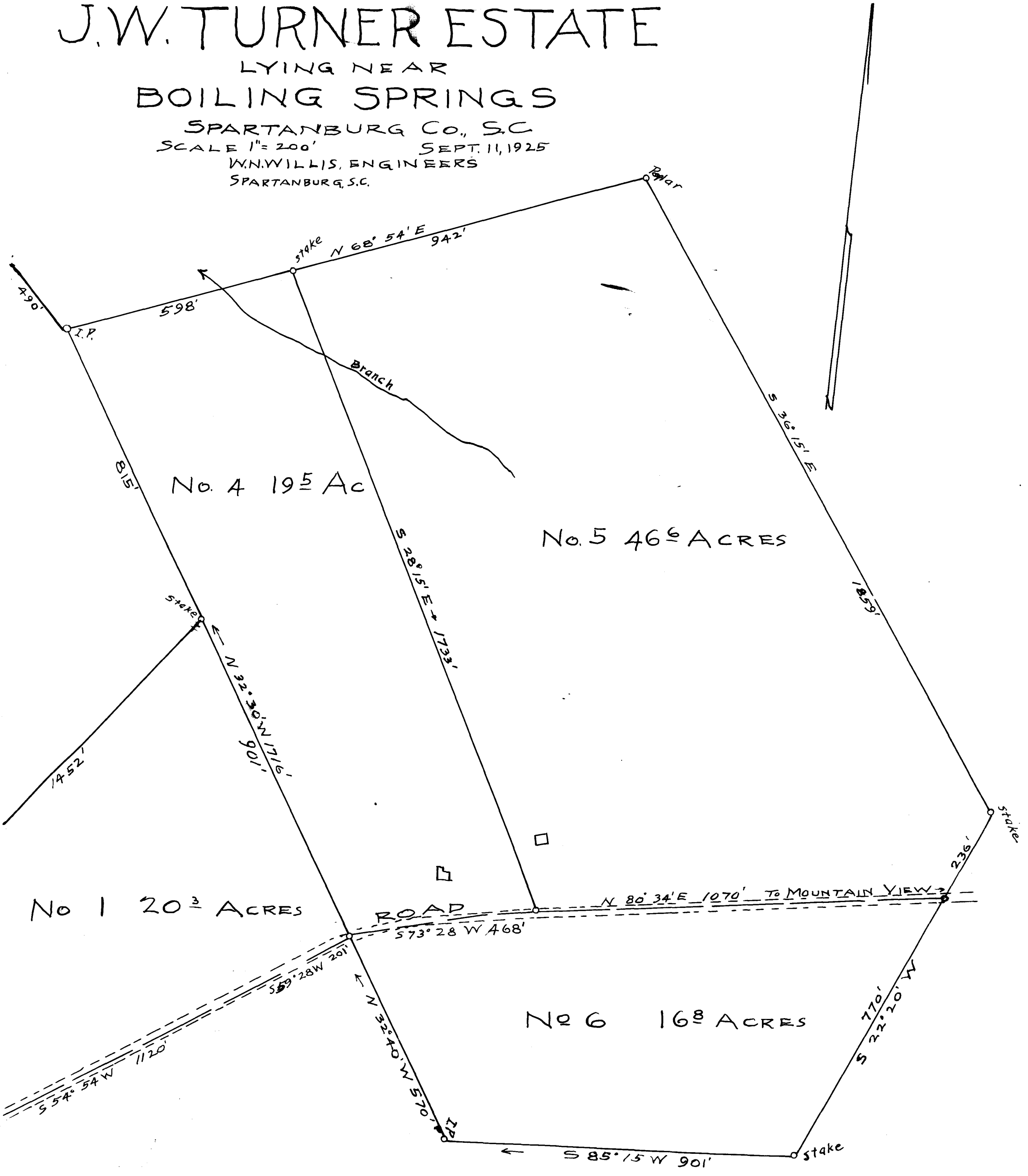
EX PARTE
J. W. TURNER ESTATE



R.H. DODD TRACT OF THE J.W. TURNER ESTATE

LYING NEAR
BOILING SPRINGS

SPARTANBURG CO., S.C.
SCALE 1" = 200' SEPT. 11, 1925
W.N. WILLIS, ENGINEERS
SPARTANBURG, S.C.



Registered, certified + Examined Oct. 15-1925 at 2:04 P.M.