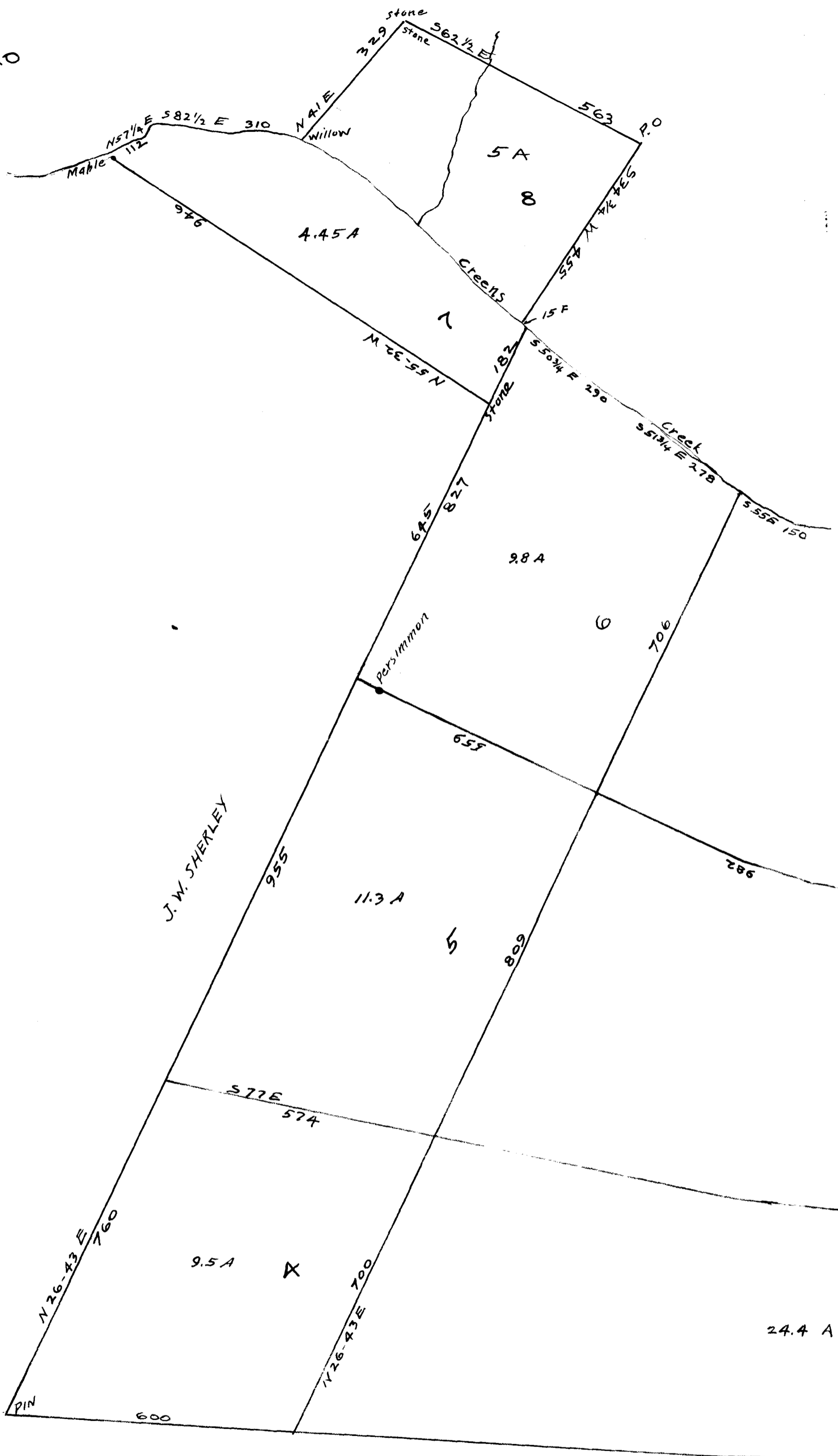


67

EX PARTE
JUDITH E. WINGO



J. W. SHERLEY

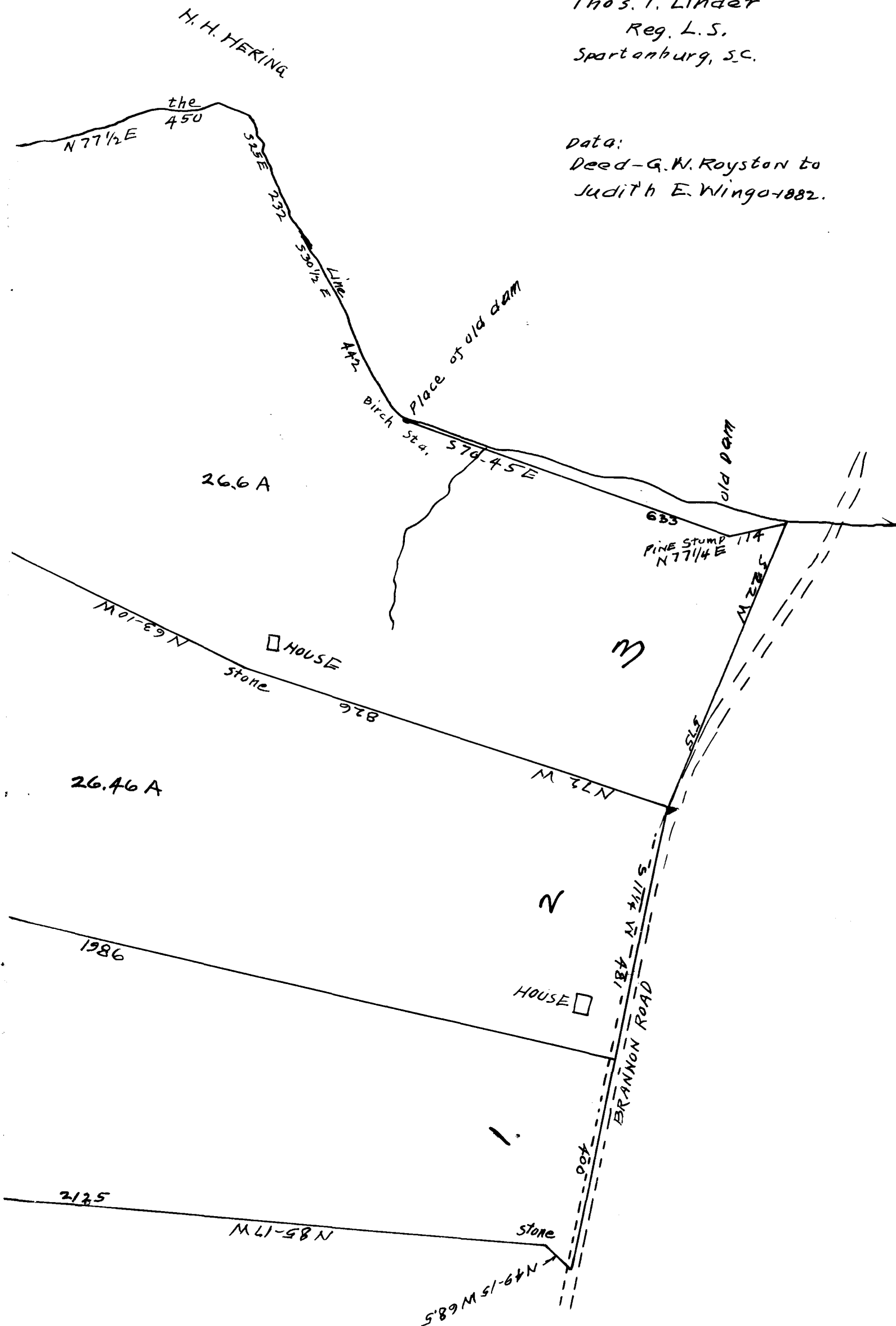
J. E. BISHOP

HARPE SURFACE ROAD

PROPERTY OF
THE ESTATE OF
JUDITH E. WINGO
NEAR
CAMPTON CONSOLIDATED SCHOOL
SPARTANBURG COUNTY, S. C.
OCT. 3, 1925

Thos. T. Linder
Reg. L. S.
Spartanburg, S. C.

Data:
Deed - G. W. Royston to
Judith E. Wingo - 1882.



Registered, certified & Examined Oct 30-1925 at 9:35 AM