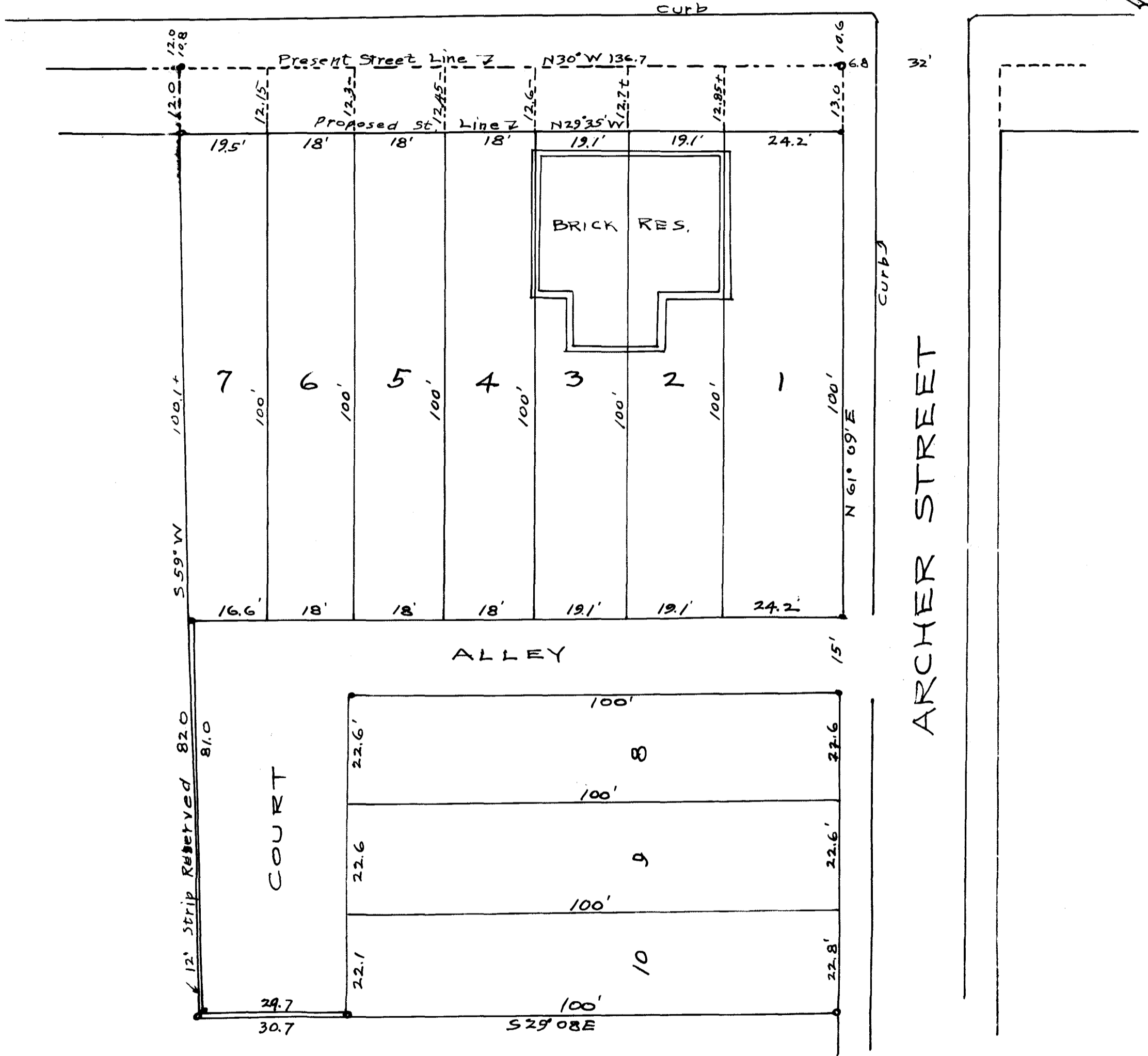


EX PARTE  
SARAH M. ARCHER

70

N. CHURCH STREET



MRS. J. C. ARCHER EST.  
(SARAH M. ARCHER)  
SPARTANBURG, S.C.

SCALE 1" = 20' SEPT. 9, 1925  
W. N. WILLIS, ENGINEERS.  
SPARTANBURG, S.C.  
F.C.W.

Registered, Certified & Examined Nov. 12, 1925 at 10:03 A.M.