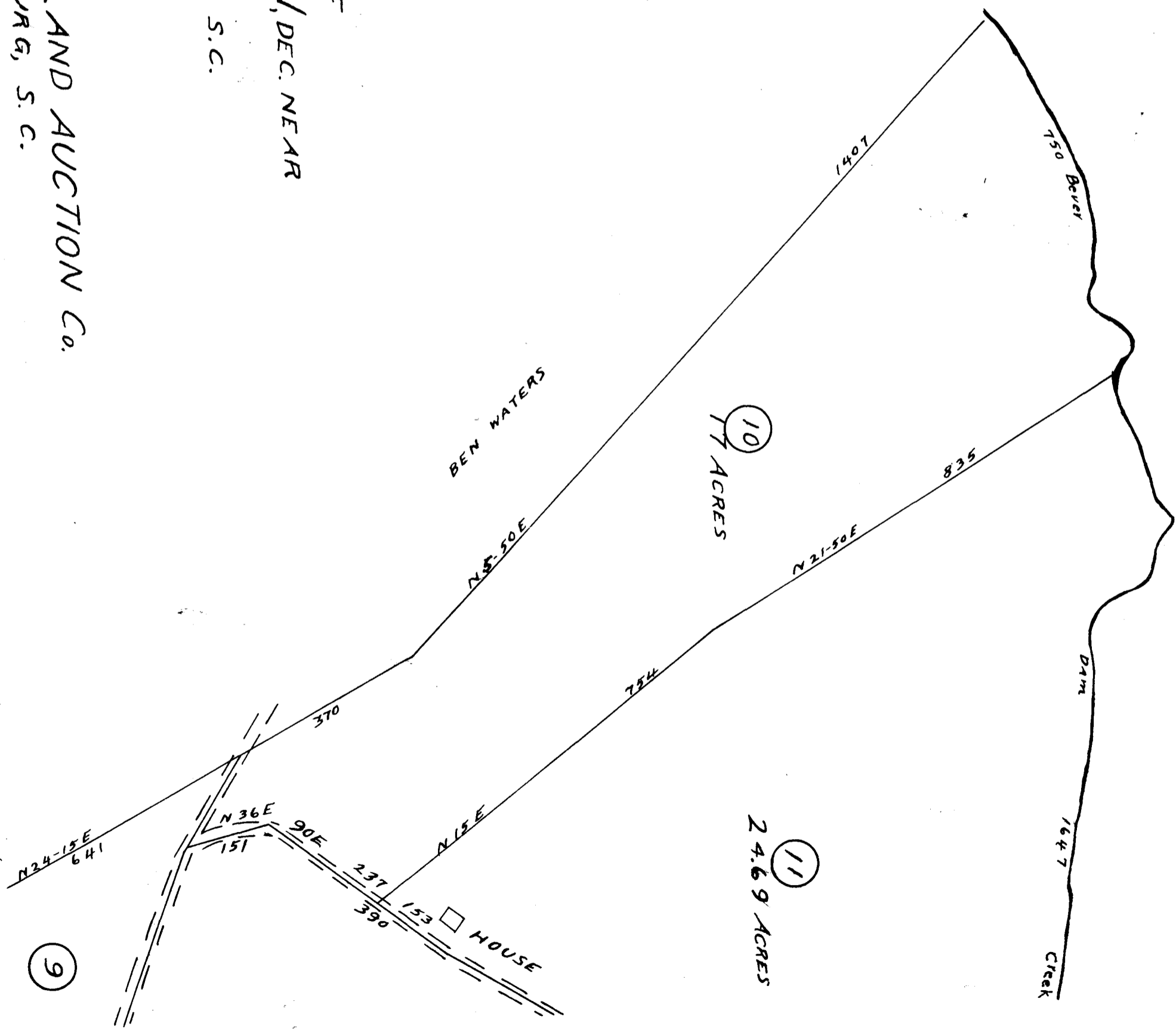


EX PARTE
J.P. MASON EST.

Note:
See Page 71

PREPARED FOR
THE INTERSTATE LAND AUCTION CO.
SPARTANBURG, S. C.

REAL ESTATE OF
J. P. MASON, DEC. NEAR
GREER
SPARTANBURG COUNTY, S. C.
Aug. 1925



Registered, certified & Examined Nov. 14-1925 at 9:20 A.M.

Note:
See Page 71

