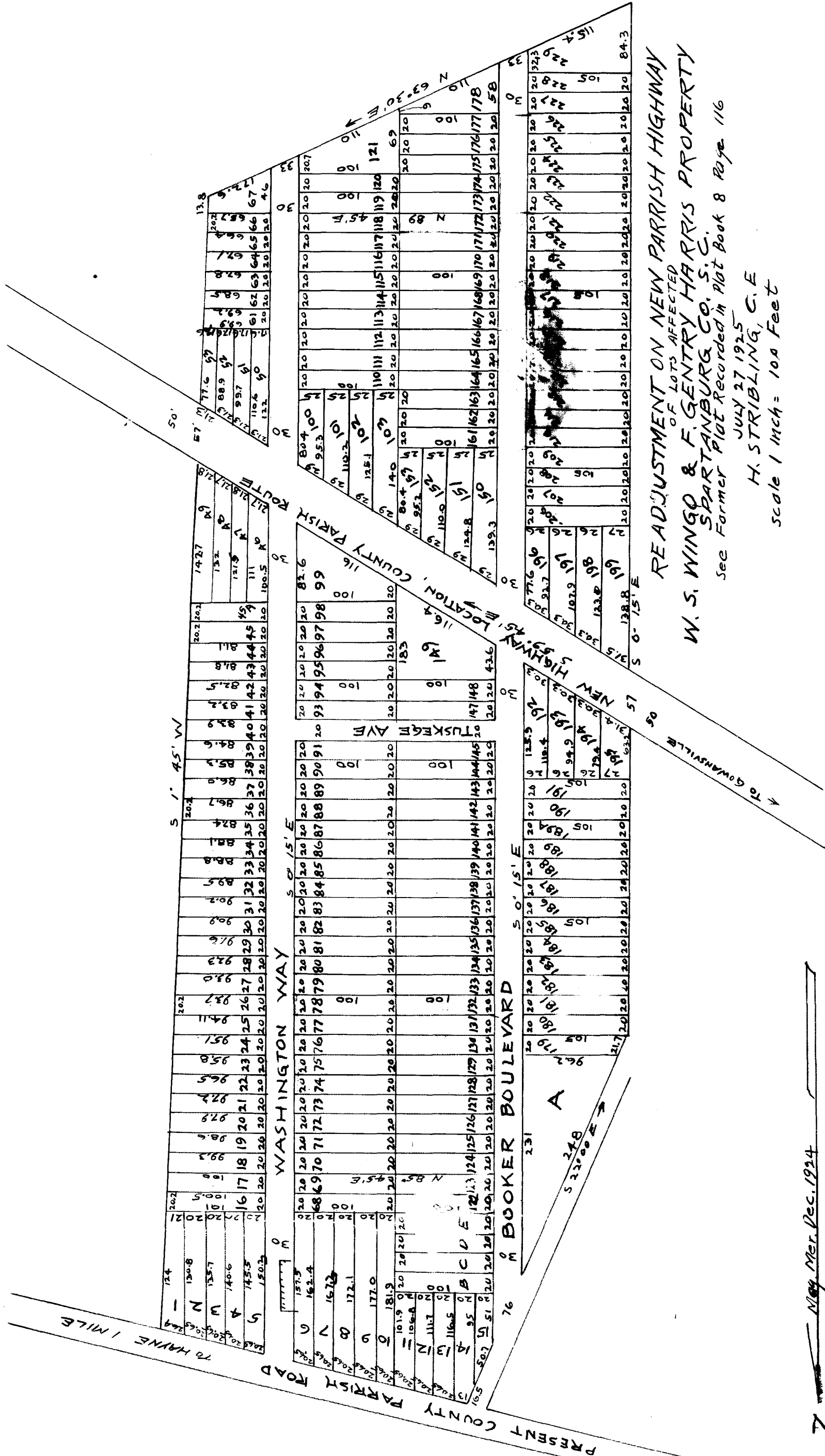


EX PARTE  
W. S. WINGO  
F. GENTRY HARRIS



READJUSTMENT ON NEW PARRISH HIGHWAY  
OF LOTS AFFECTED  
W. S. WINGO & F. GENTRY HARRIS PROPERTY  
SPARTANBURG CO. S. C.  
See Former Plat Recorded in Plat Book 8 Page 116  
JULY 27 1925  
H. STRIBLING, C. E.  
scale 1 inch = 100 Feet

May, Mer. Dec. 1924

Registered, certified & Examined July 9-1926 at 10:33 A.M.