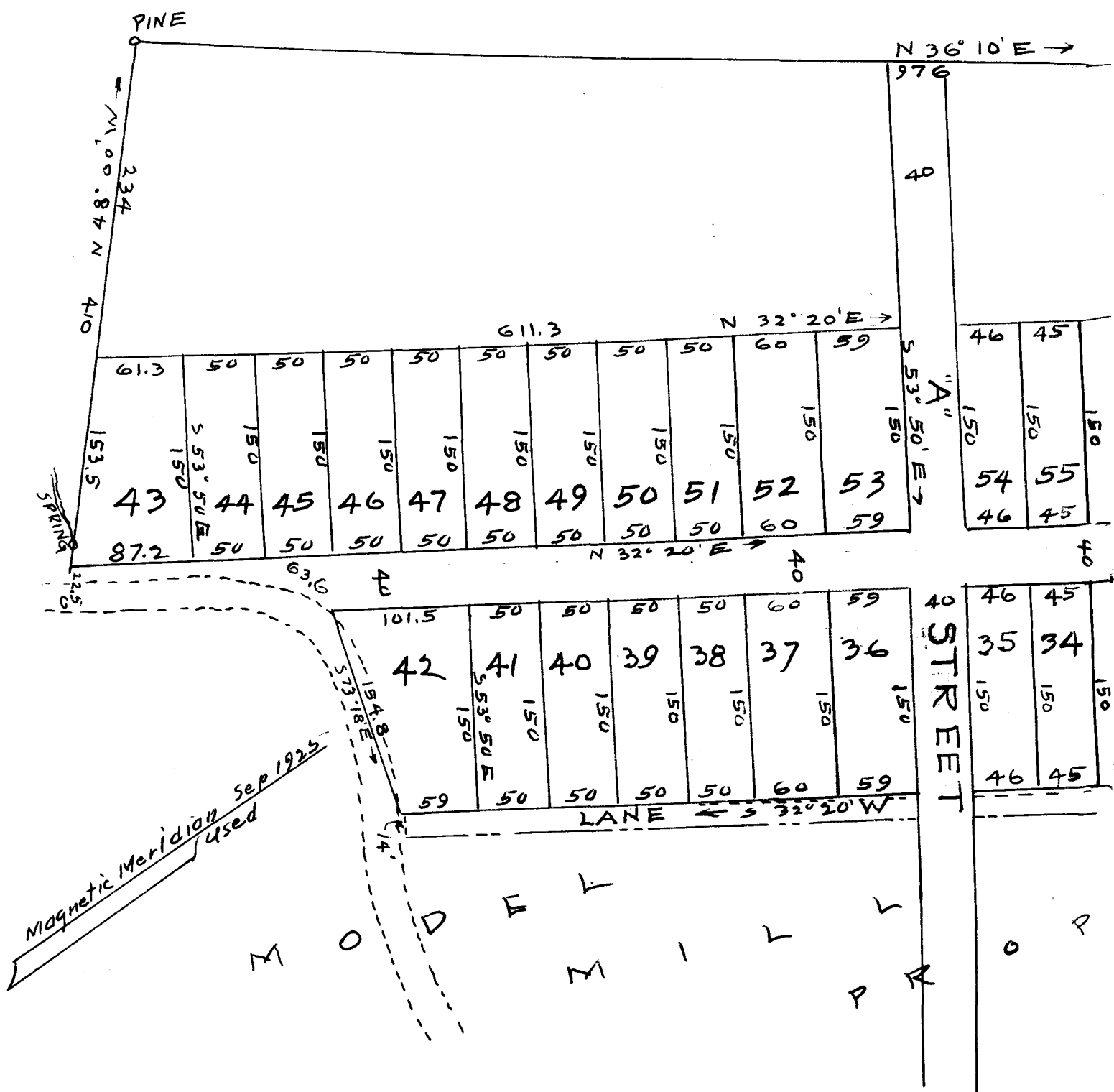


92

EX PARTE
J. J. GENTRY

C L E V E





SUBDIVISION
OF
J. J. GENTRY PROPERTY
Being Lots 68, 69, 70, 71, 72, 73, 74, and 18, 19, 20, 21, 22, 23, 24
of former Trimmer Property, see Plat by R. O. Sams
LOCATION NEAR TEXTILE INSTITUTE
SPARTANBURG COUNTY S. C.

SCALE 1 INCH = 100 FT

ABOVE RE SUBDIVISION SEP. 9, 1925 & OCT. 10, 1925
H. STRIBLING, C. E.
FIELD C. B. VASS

Registered, Certified & Examined April 2-1926 at 9:48 AM.