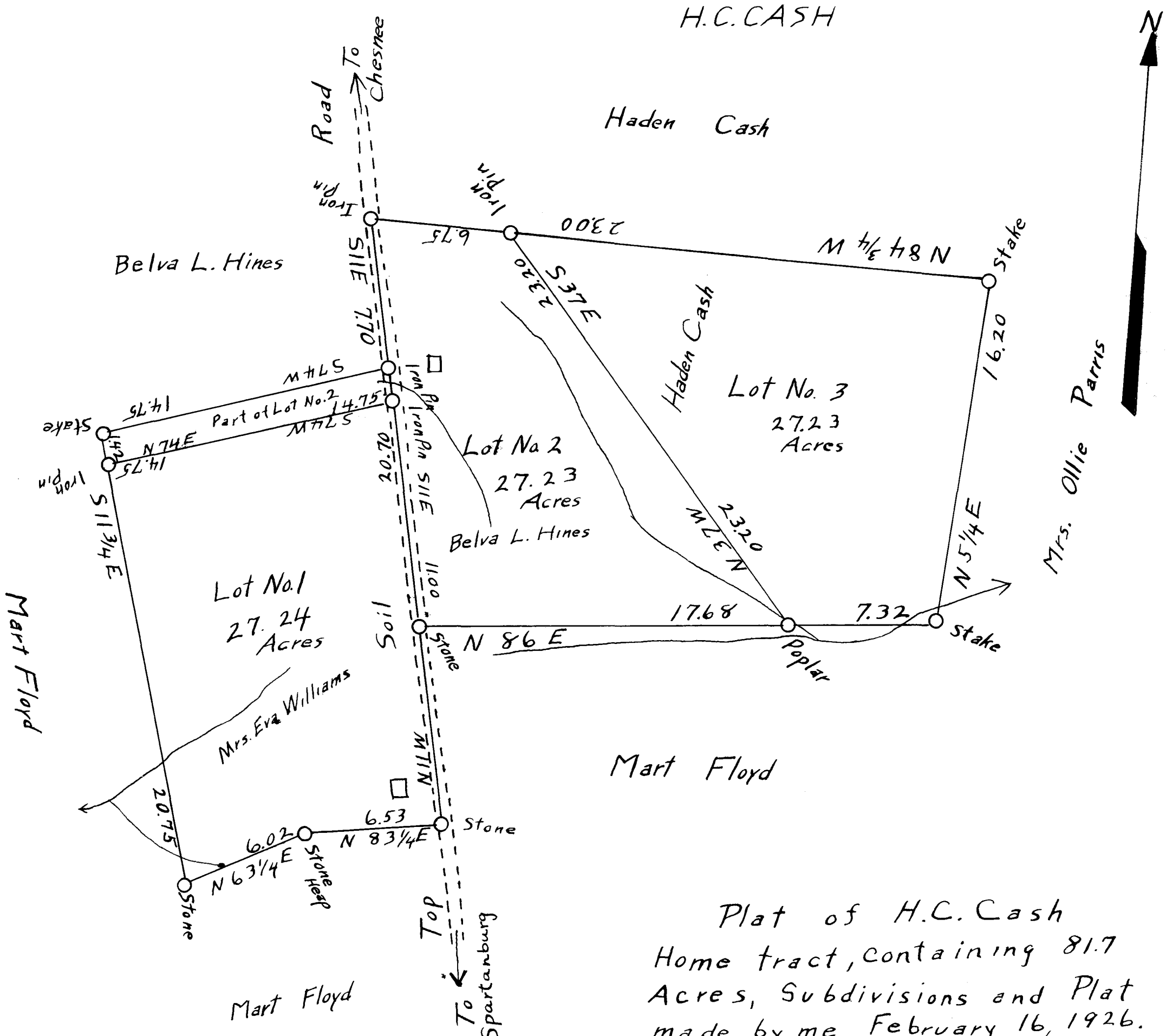


ex Parte  
H.C. CASH



Plat of H.C. Cash  
 Home tract, containing 81.7  
 Acres, Subdivisions and Plat  
 made by me, February 16, 1926.  
 at request of her.  
 J.B. Cash, L.S.

Scale, 5 Chains per Inch.

Registered, Certified & Examined May 29-1926 at 12:56 P.M