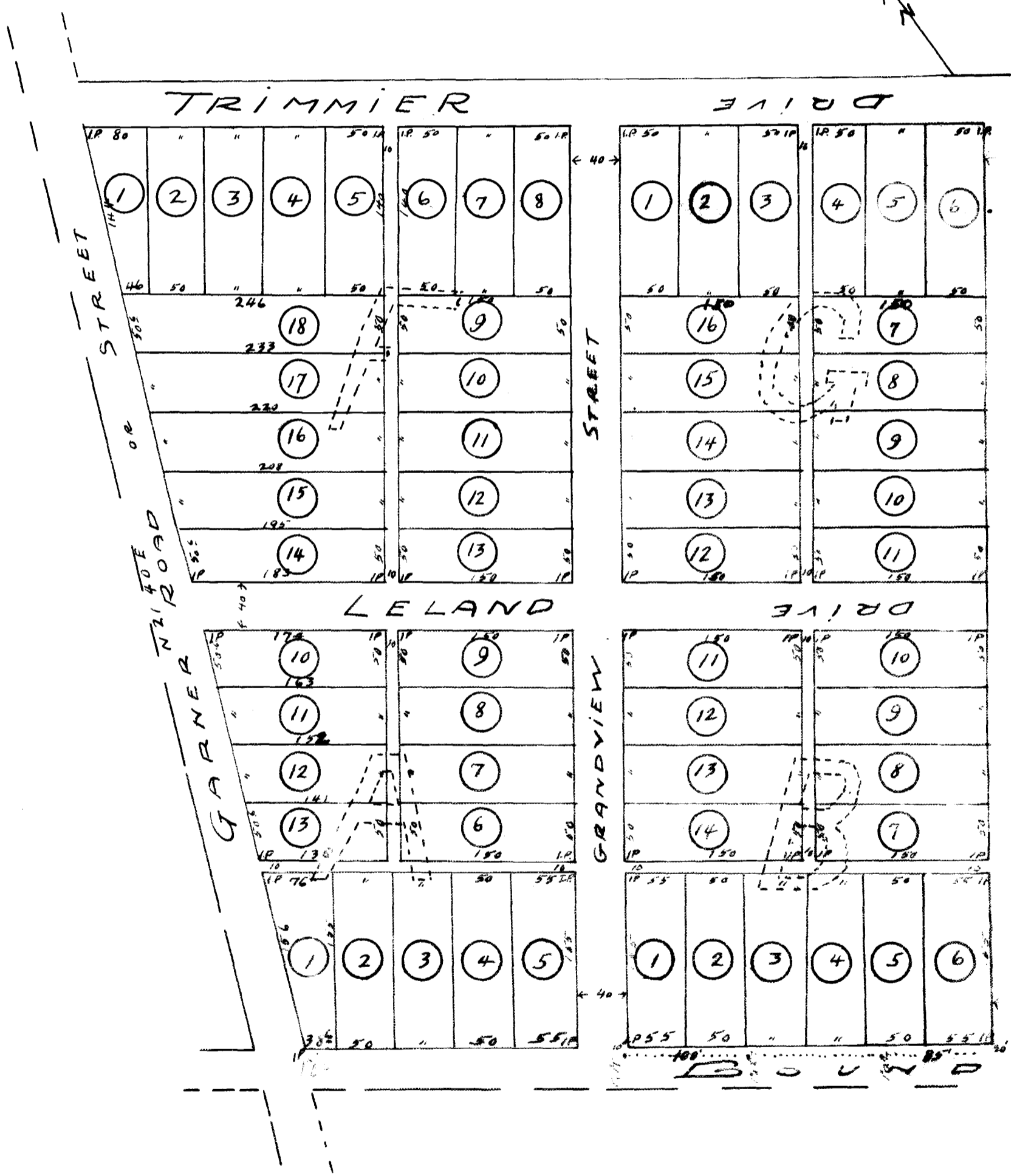


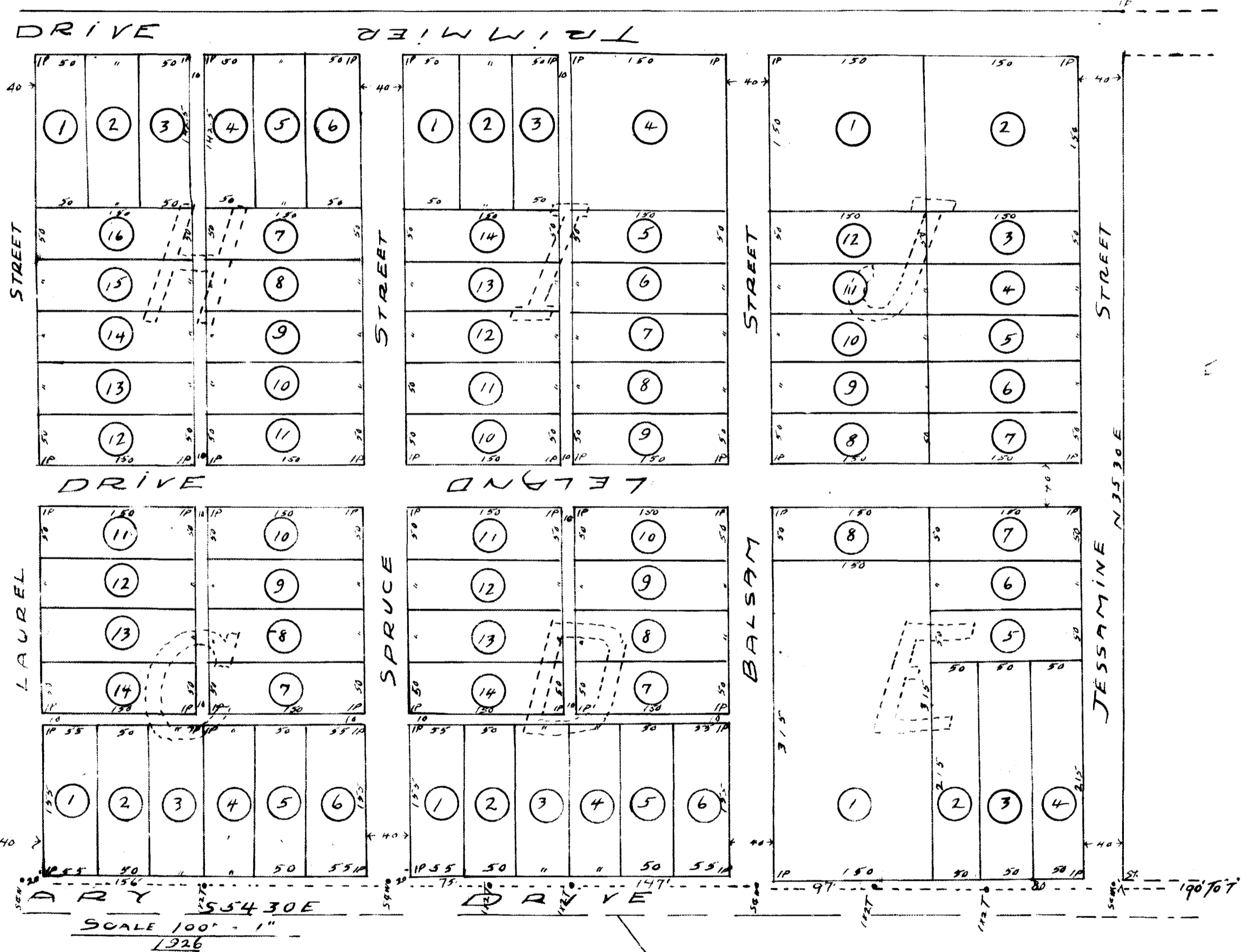
Fair



THIS PLAT REPRESENTS SUBDIVISION OF LOTS 1, 2, 3, 4, 5,
 BY L. P. EPTON FOR TRIMMIER, BOMAR & EPTON, FEBY. 1926
 DOTTED LINE SHOWS

EX PARTE
T.R. TRIMMIER

Overview Heights



6,7,8,11,12,13 & 14 OF PROPERTY SOLD IN THE CASE OF TRIMMIER VS MITCHELL, AS MADE
IRON PINS AT ALL STREET CORNERS & ALLEY OPENINGS - SCALE 100' = 1" L.P. EPTON, SUR.
LOCATION OF 2" WATER MAIN & CONNECTIONING "T" 1" x 2" & ALSO STOP & WASTE AT STREET.

Registered, Certified & Examined June 4-1926 at 5:30 P.M.