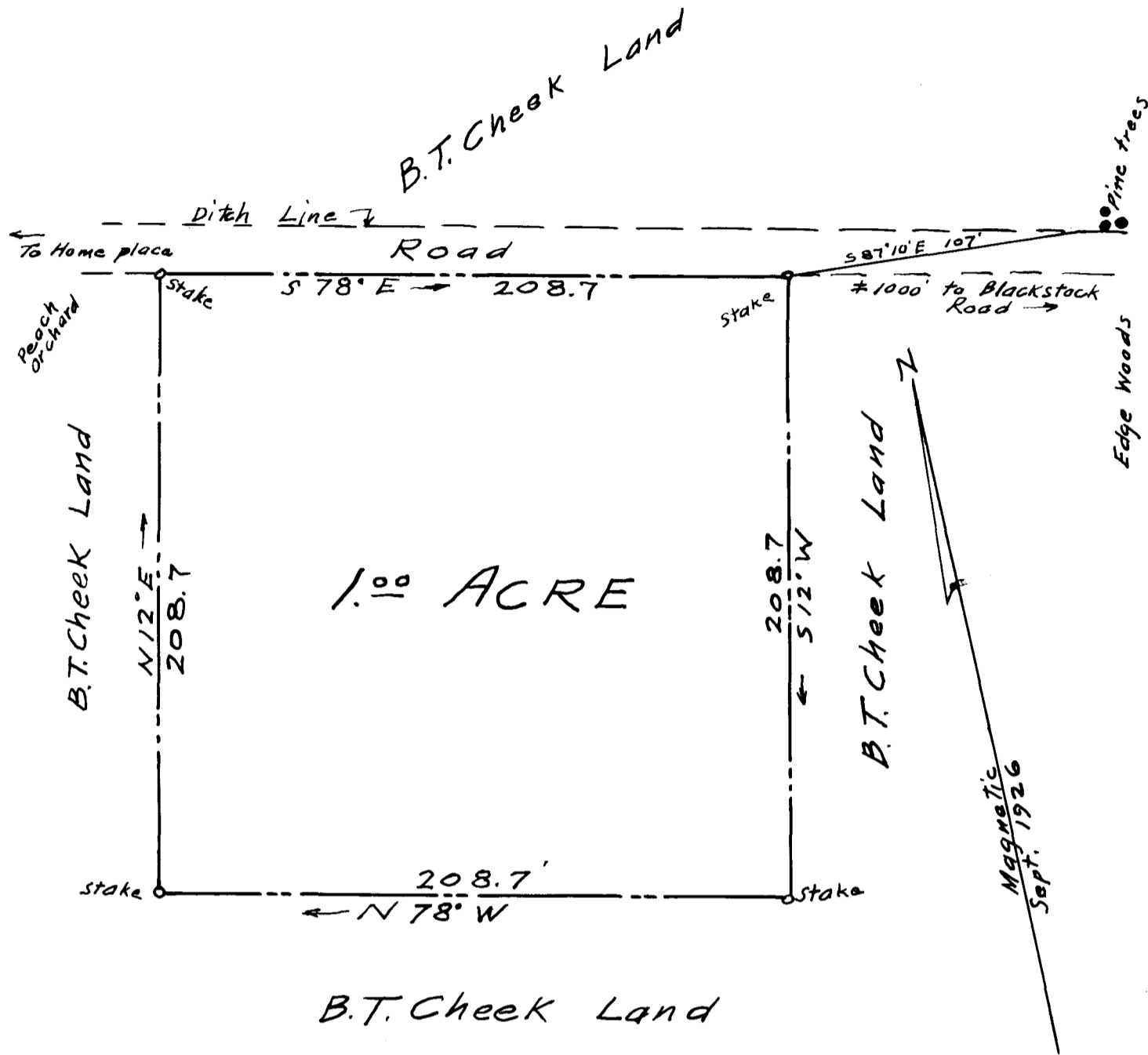


EX PARTE
B. E. CHEEK



Plat showing
 PROPERTY BEING CONVEYED
 By
 B. T. CHEEK
 TO
 B. E. CHEEK
 LYING AND BEING IN
 SPARTANBURG COUNTY
 ABOUT 1/2 MILE NORTHWEST OF MT. ZION
 CHURCH

Scale: - 1" = 50' Sept. 7, 1926
 The Harwood Beebe Co., Engineers

Registered, Certified & Examined. Sept. 11-1926 at 1:07 P.M.