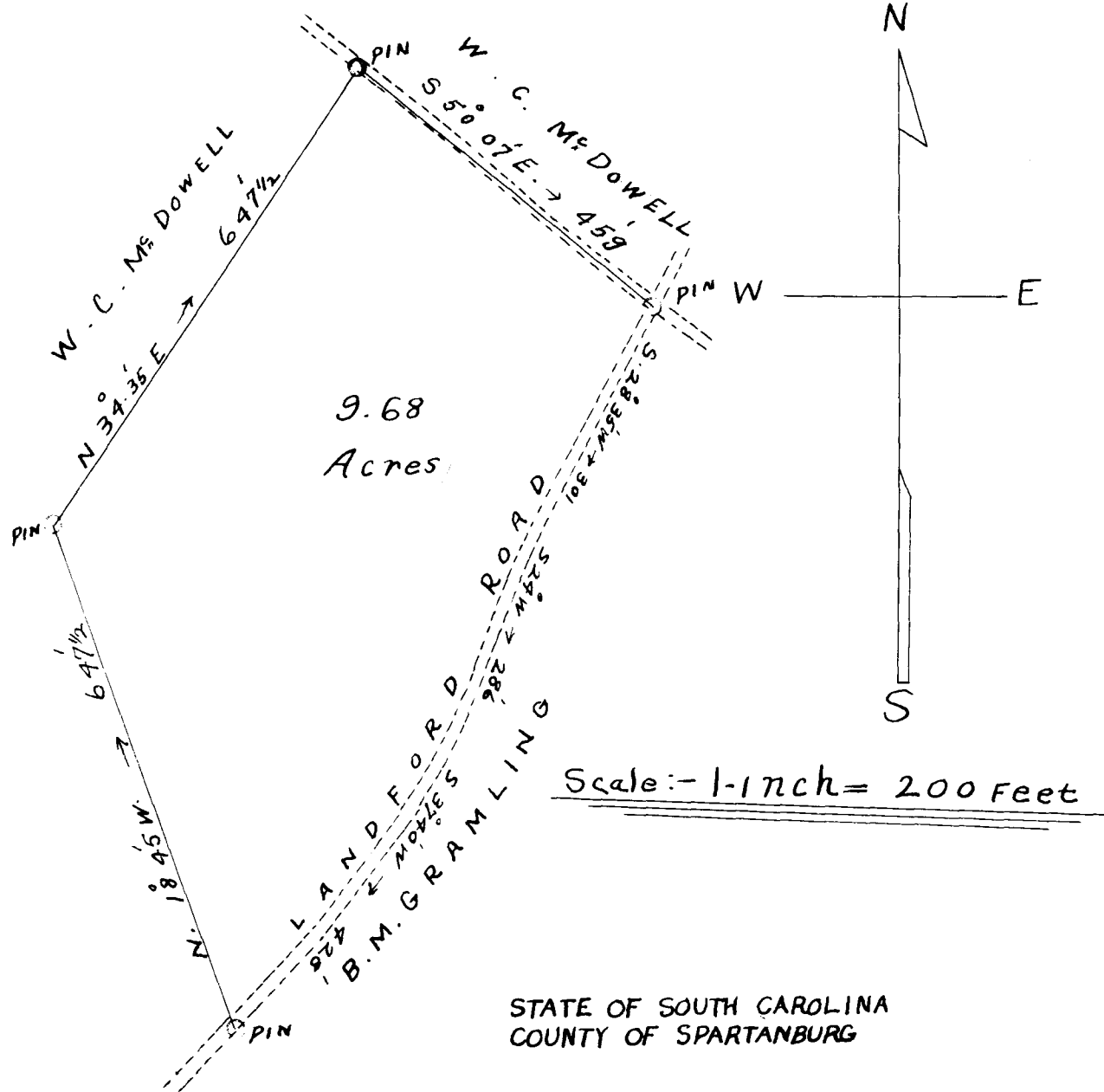


Ex Parte

W.C.McDOWELL



TO WHOME IT MAY CONCERN THIS IS TO CERTIFY THAT I HAVE THIS DAY SURVEYED FOR W.C. McDOWELL A CERTAIN LOT OR PARCEL OF LAND SITUATED IN COUNTY AND STATE AFORESAID ON THE EAST SIDE OF THE HOWARD GAP ROAD ABOUT ONE MILE SOUTH OF CAMOBELLO AND HAS SUCH SHARE SIZE MARKS BOUNDARIES AS REPRESENTED HEREON.

This Sept. 8th. 1926:

*J.H. Atkins*  
Surveyor

*Registered, Certified, & Examined Oct. 8-1926 at 11:36 A.M.*