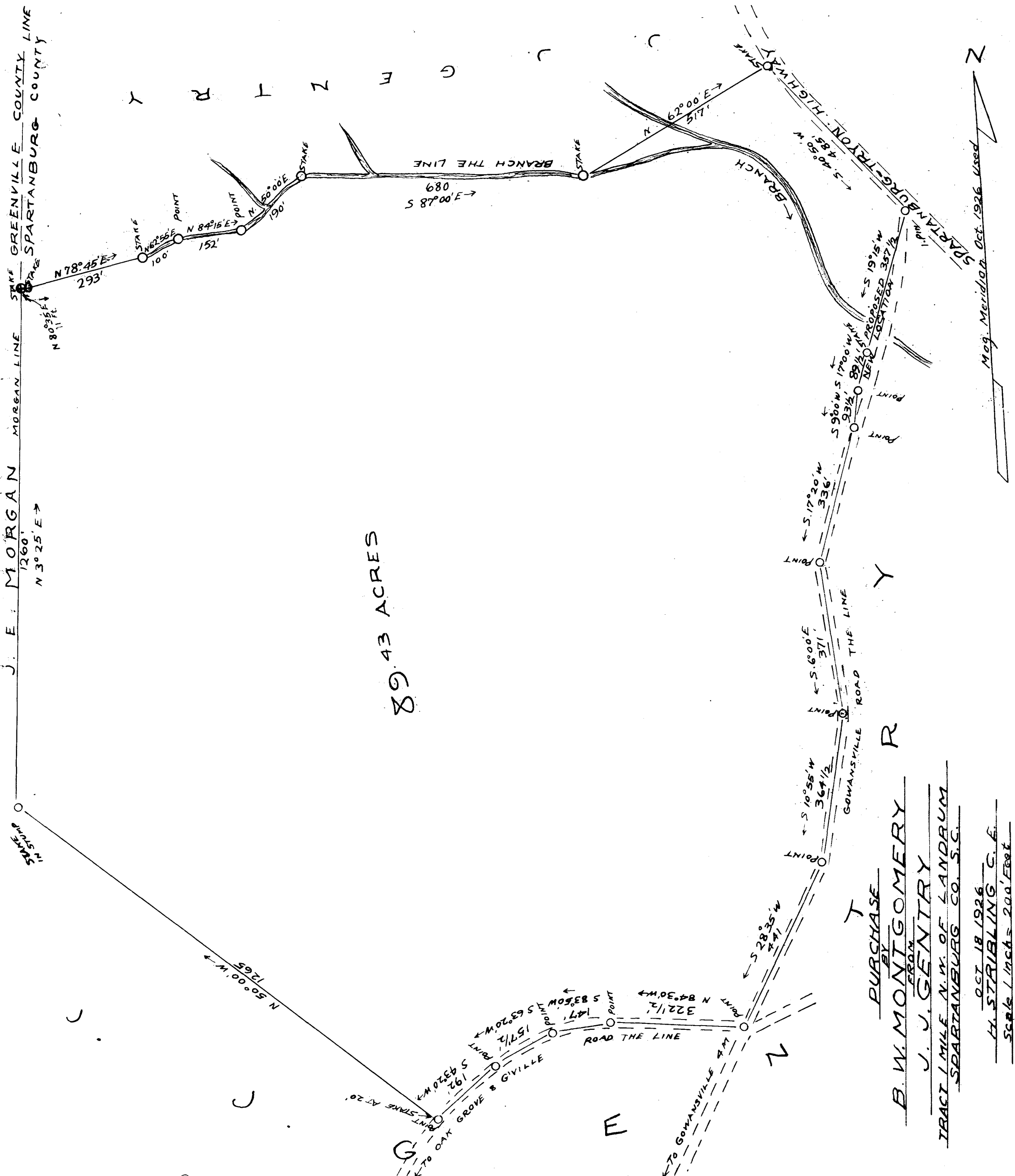


Ex Parte
B.W. MONTGOMERY



89.43 ACRES

PURCHASE
BY
B.W. MONTGOMERY
FROM
J. J. GENTRY
TRACT 1 MILE N.W. OF LANDRUM
SPARTANBURG CO. S.C.

OCT 18 1926
H. STIRLING C.E.
Scale 1 inch = 200 Feet
Filed S.B. KASS

Mag. Meridian Oct. 1926 Used

Registered, Certified, & Examined Mar. 13 - 1926 at 12:53 P.M.