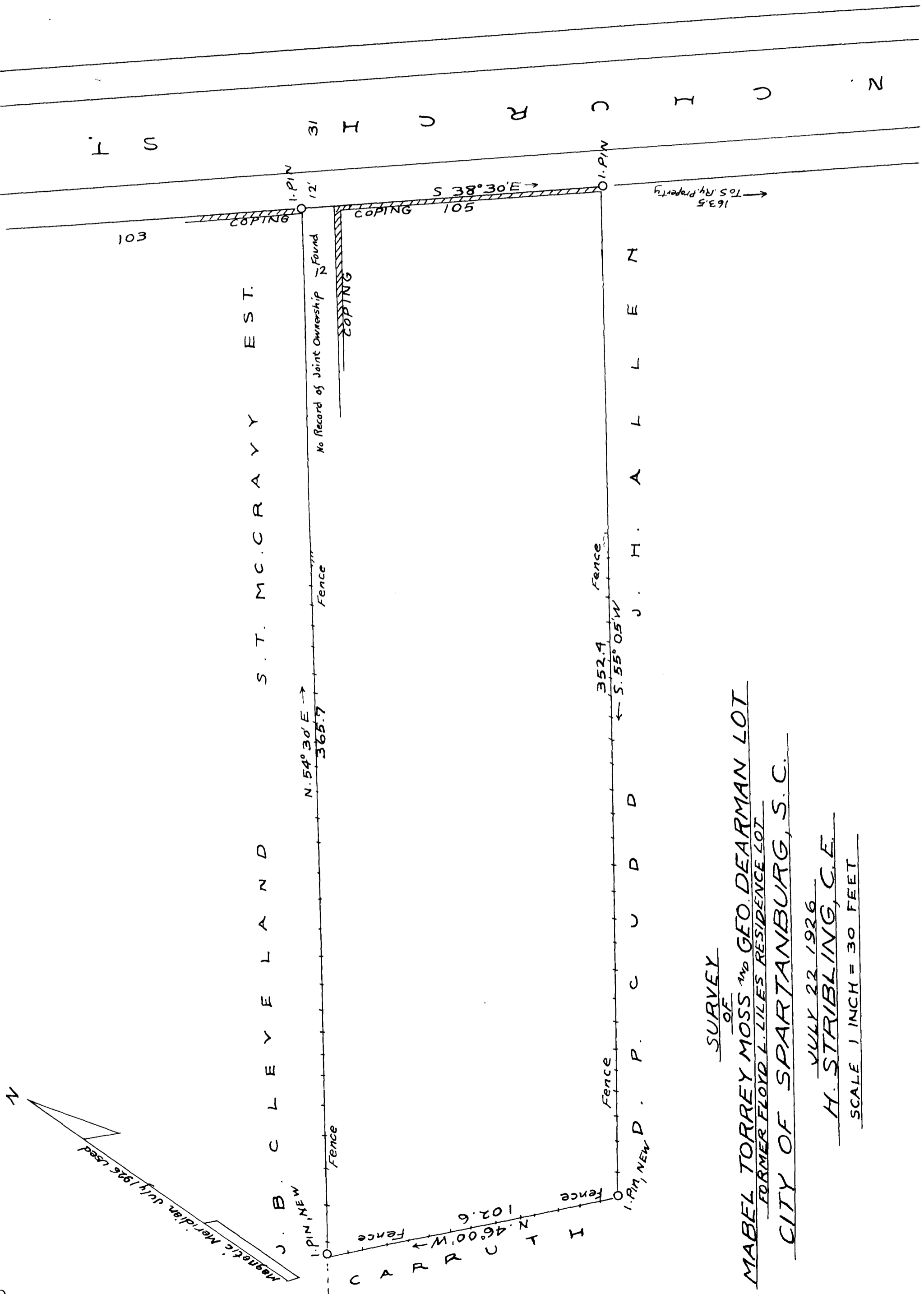


Ex Parte
MABEL TORREY MOSS & GEO. DEARMAN



SURVEY
OF
MABEL TORREY MOSS AND GEO. DEARMAN LOT
FORMER FLOYD L. LILES RESIDENCE LOT
CITY OF SPARTANBURG, S. C.
JULY 22 1926
H. STIRLING, C.E.
SCALE 1 INCH = 30 FEET

FIELD C. B. VASS.

Registered, Certified & Examined Nov. 15-1926 at 10:42 A.M.