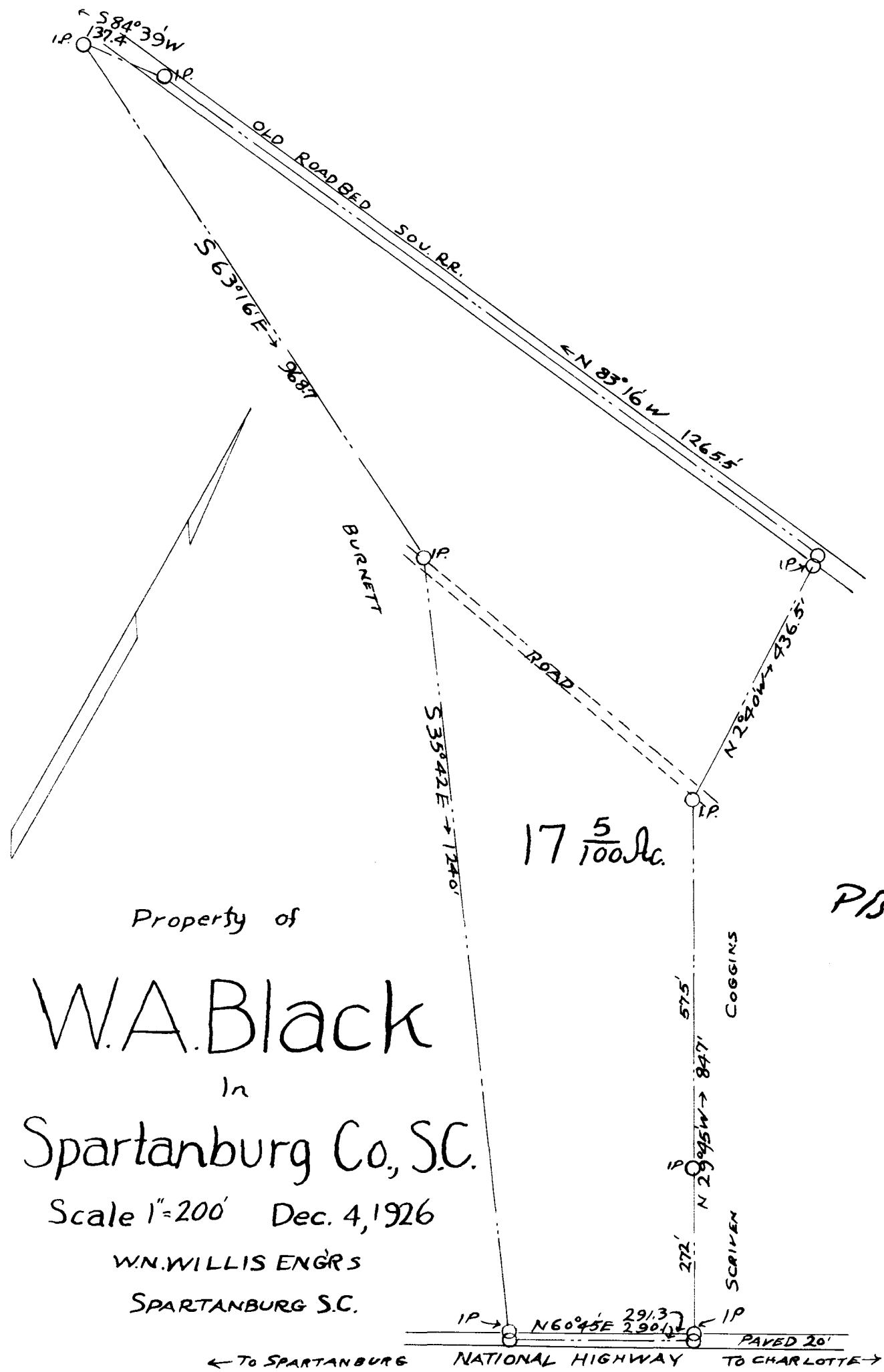


Ex Parte  
W.A. BLACK



$17 \frac{5}{100}$  Ac.

PB10-39

Property of  
**W.A. Black**  
 In  
**Spartanburg Co., S.C.**  
 Scale  $1"=200'$  Dec. 4, 1926  
 W.N. WILLIS ENGRS  
 SPARTANBURG S.C.

Registered, Certified, & Examined Dec. 10-1926 at 5:13 P.M.