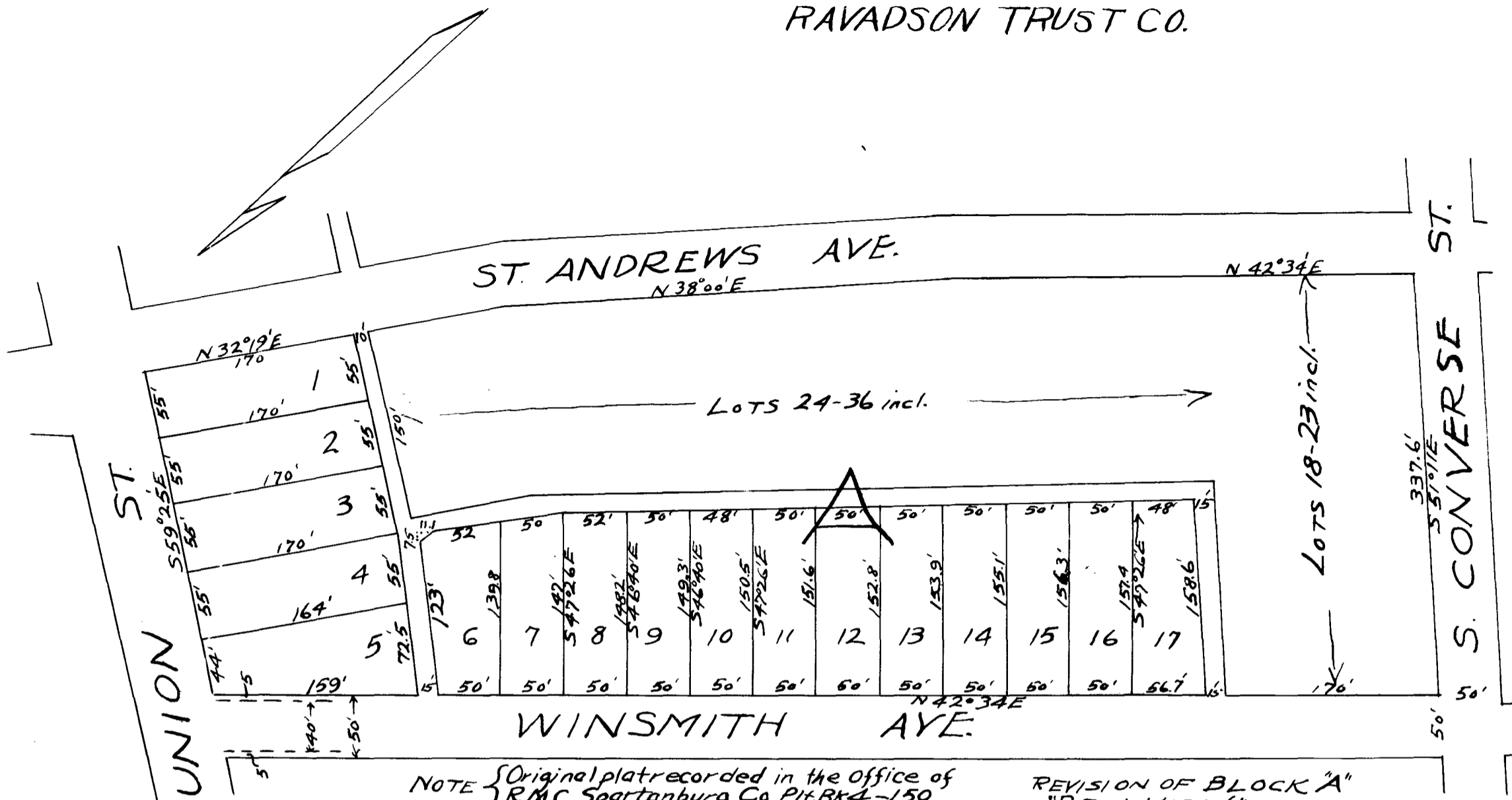


Ex Parte
RAVADSON TRUST CO.



NOTE { Original plat recorded in the Office of
R.M.C. Spartanburg Co. Plat Book 4-150

REVISION OF BLOCK "A"
"BELLVIEW"
RAVADSON SUBDIVISION
IN THE CITY OF
SPARTANBURG, S.C.
SCALE 1"=100' SEPT 24, 1926
W.M. WILLIS ENGINEERS
SPARTANBURG, S.C.

NOTE: Winsmith Ave. was originally 40' wide
and has now been widened to 50'
by setting the lines back 5' on
each side.

Registered, Certified, & Examined Dec. 17-1926 at 10:57 A.M.