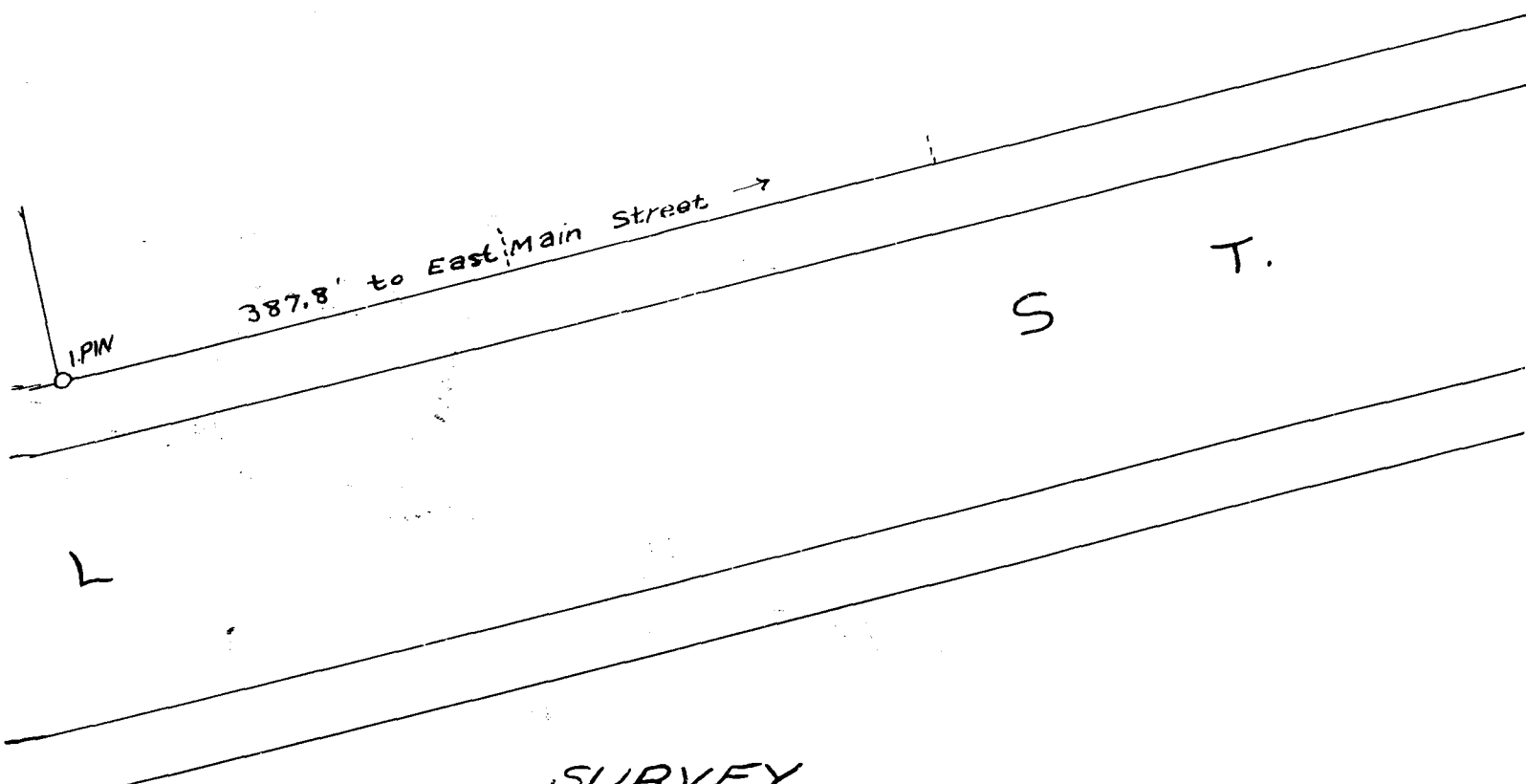




Ex Parte
J.S. CHRISTOPHER



SURVEY

OF

J. S. CHRISTOPHER PROPERTY
CITY OF SPARTANBURG, S.C.

being Lots Nos. 3 and 4 of Plat by W.N. Willis C.E. Recorded in Plat Book 8 Page----
RE-ARRANGEMENT.

JUNE 17 1926

H. STRIBLING, C. E.

Scale 1 inch = 20 Feet

FIELD C. B. VASS

Registered, Certified, and Examined Jan. 19-1927 at 3:10 P.M.