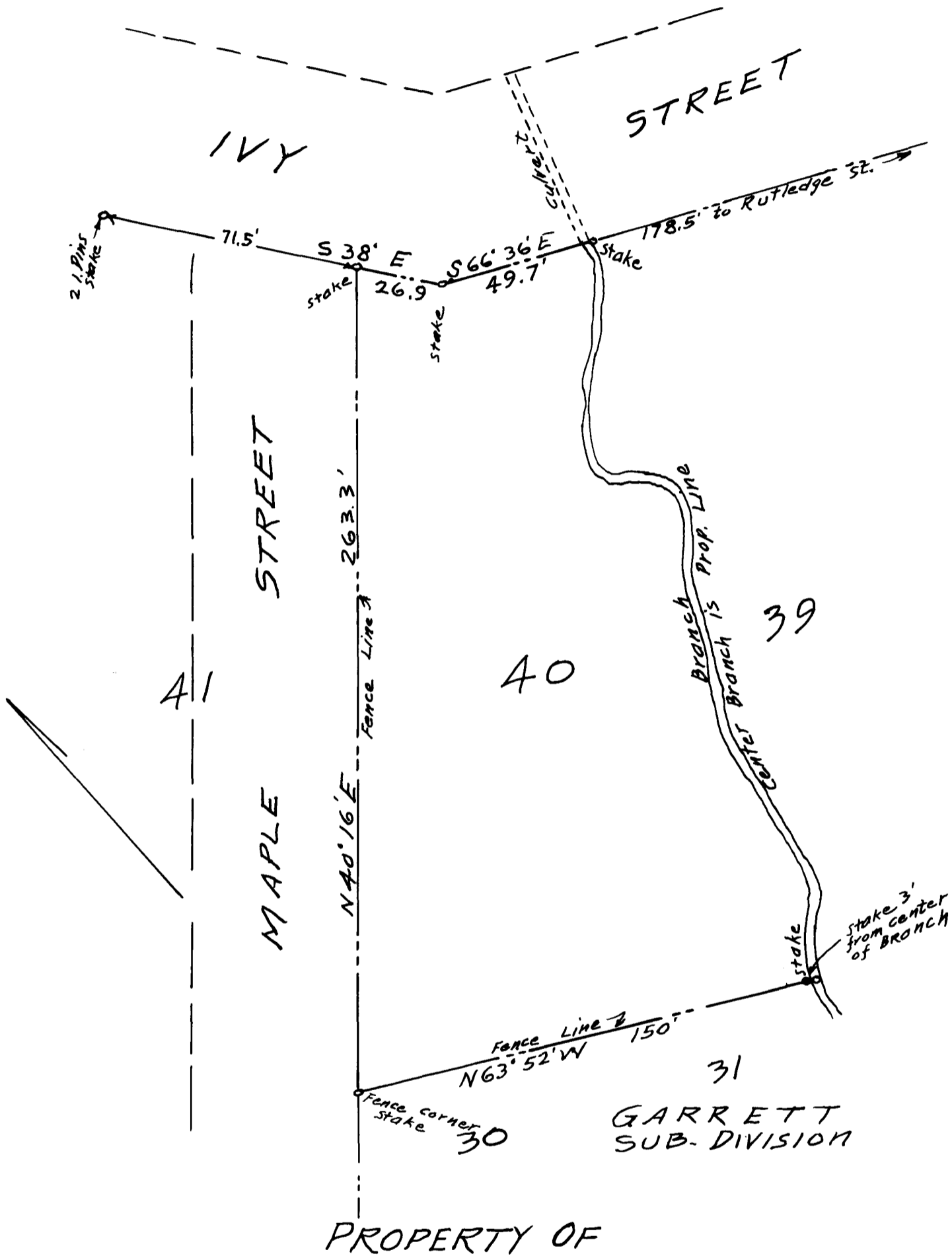


EX PARTE
JENNIE B. GARRETT



JENNIE B. GARRETT
IN THE CITY OF SPARTANBURG, S.C.

SCALE:- 1" = 40'

JAN 31, 1927

The Harwood Beebe Company
Engineers
SPARTANBURG, S.C.

Registered, Certified & Examined July 2-1927 at 12:43 P.M.