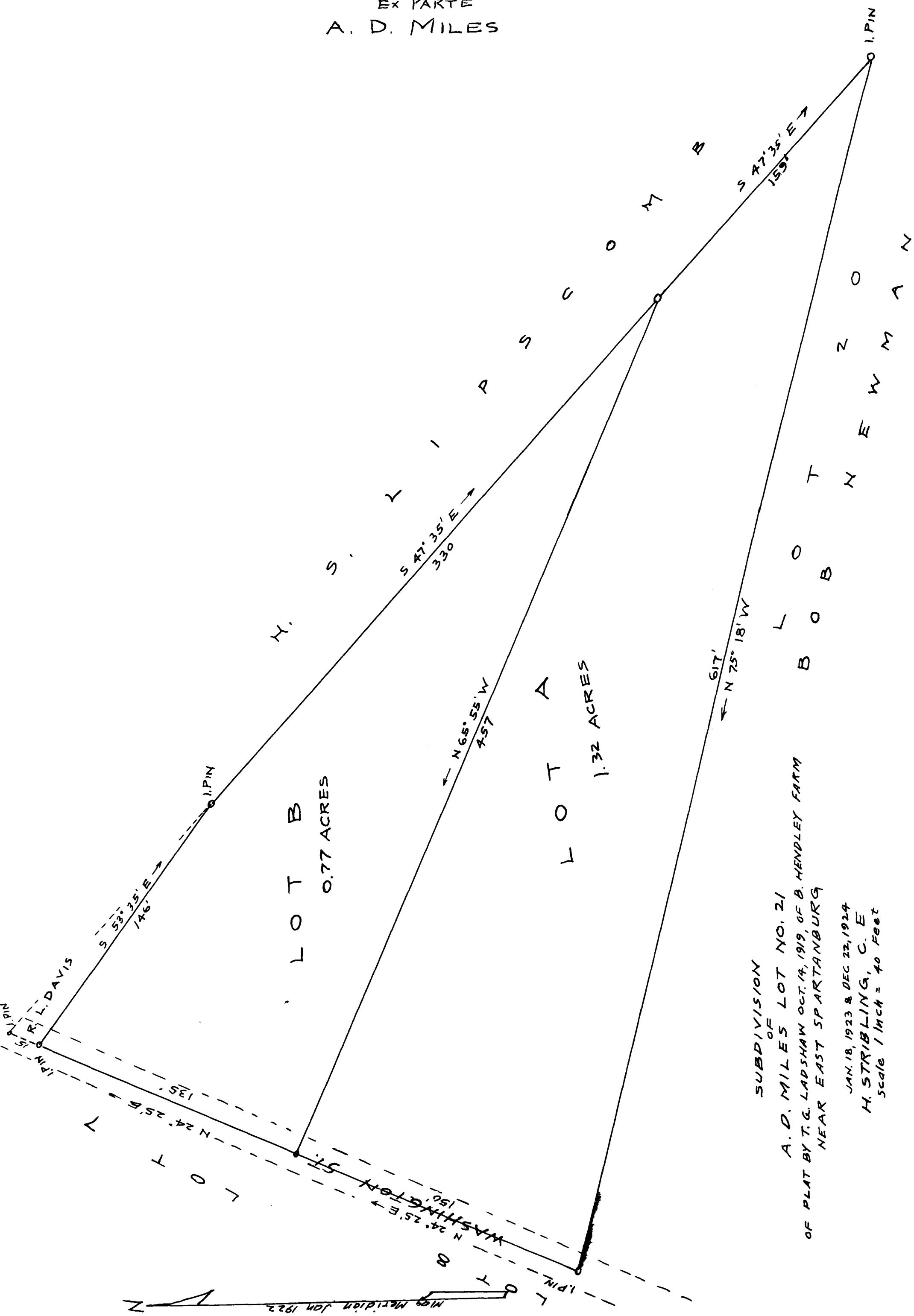


EX PARTE
A. D. MILES



SUBDIVISION
OF
A. D. MILES LOT NO. 21
OF PLAT BY T. G. LADSHAW OCT. 14, 1919, OF B. HENDLEY FARM
NEAR EAST SPARTANBURG

JAN. 18, 1923 & DEC 22, 1924
H. STRIBLING, C. E.
Scale 1 Inch = 40 Feet

Registered, Certified & Examined March 29-1927 at 1:31 P.M.