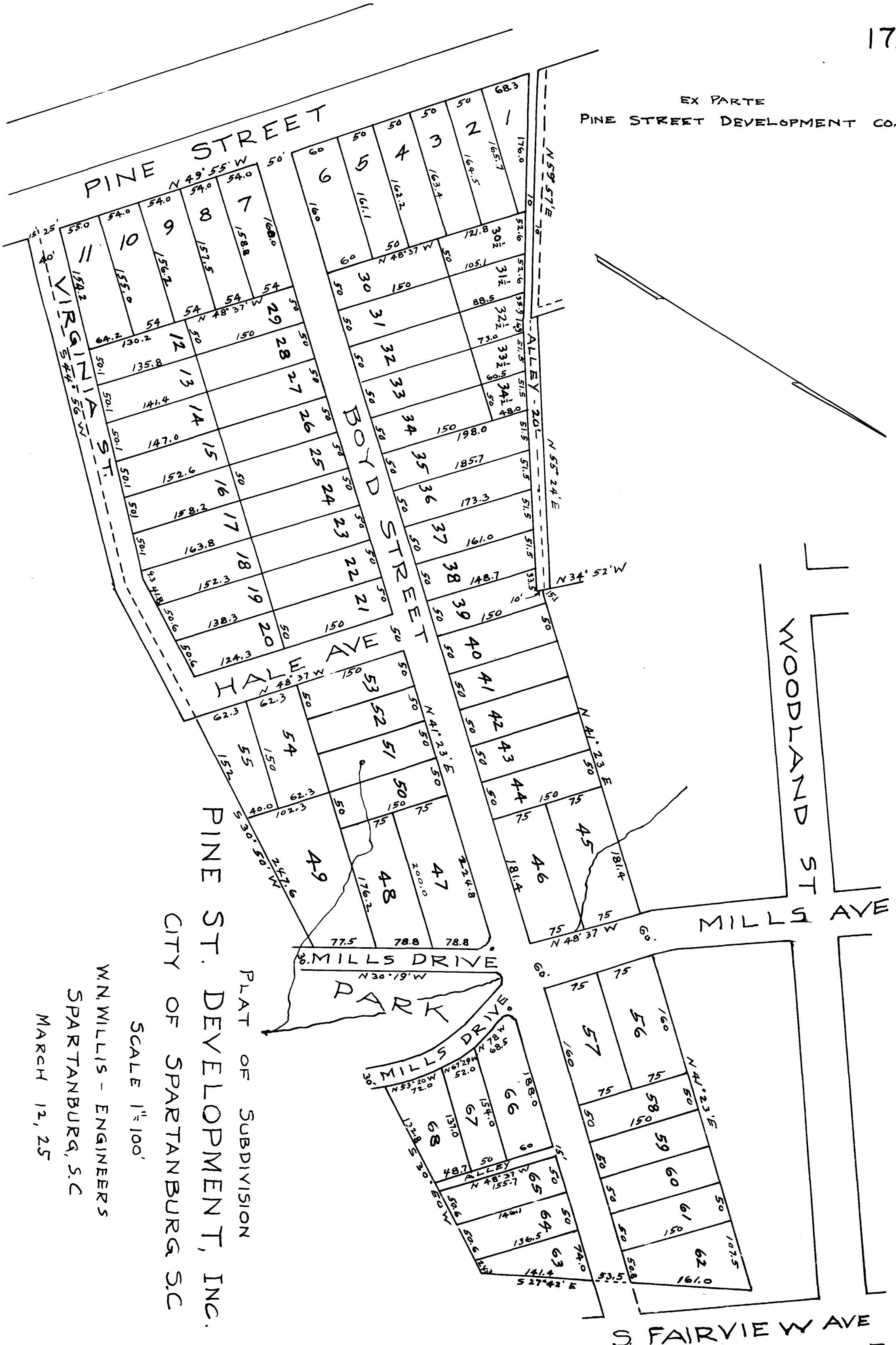


EX PARTE
PINE STREET DEVELOPMENT CO.



WN WILLIS - ENGINEERS
 SPARTANBURG, S.C.
 MARCH 12, 25

SCALE 1"=100'

PLAT OF SUBDIVISION
 PINE ST. DEVELOPMENT, INC.
 CITY OF SPARTANBURG, S.C.

Registered, Certified & Examined April 7-1927 at 1:00 P.M.