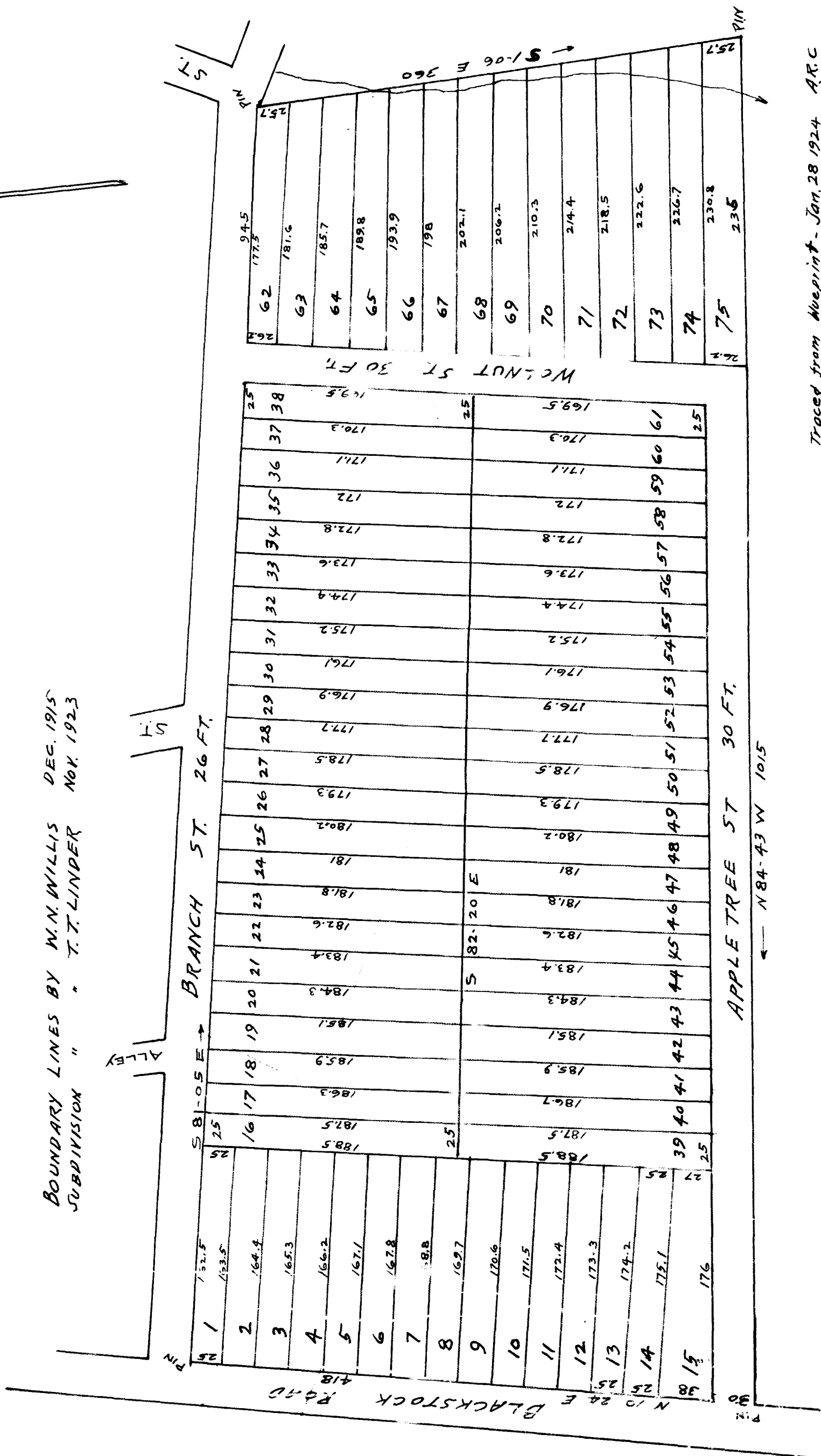


EX PARTE  
W. C. WILKINS

W. C. WILKINS PROPERTY  
FOR INTERSTATE LAND AUCTION CO.  
PROPERTY AT INMAN, S.C.

BOUNDARY LINES BY W. N. WILLIS DEC. 1915  
SUBDIVISION " " T. T. LINDER NOV. 1923



Traced from Blueprint - Jan. 28 1924 A.R.C

Registered, Certified & Examined May 16-1927 at 3:33 P.M.